



## Rix's Creek North Continuation Project & operational activities at Rix's Creek Mine

Community Newsletter – November 2023

### INTRODUCTION

Bloomfield Collieries Pty Limited (The Bloomfield Group) owns and operates Rix's Creek Mine (RCM) located in the Hunter Valley of NSW.

RCM was established in 1990 and is a coal mining operation located approximately 5 km north of Singleton at its closest point. RCM's mining operations occur on either side of the New England Highway. RCM is made up of Rix's Creek North (RCN) (formerly Integra Open Cut) and Rix's Creek South (RCS) (the original Rix's Creek Mine).

Bloomfield is seeking to extend the mine life of RCN. This is being referred to as the Rix's Creek North Continuation Project (the Project).

Following the submission of our Scoping Report, the NSW Department of Planning and Environment (DPE) has issued the Secretary's Environmental Assessment Requirements (SEARs) for the Project. The SEARs outlines the type and detail of technical and environmental assessments required in the Environmental Impact Statement (EIS), and the level of consultation required to be undertaken. A copy of the SEARs is available via a link from the Bloomfield website at:

[https://www.bloomcoll.com.au/sustainability/environmental-management/rixs-creek-assessments/rcn\\_cont](https://www.bloomcoll.com.au/sustainability/environmental-management/rixs-creek-assessments/rcn_cont)

In addition to the Project, we are also preparing a minor Modification to the current RCN consent to enable some upgrades to the existing coal processing infrastructure, including the

introduction of solid bowl centrifuges (SBC). The SBC will be used to partially dry the fine reject material from the coal washing process, which in turn will facilitate this material to be emplaced within the overburden emplacement areas and significantly reduce the ongoing use of tailings dams.

It is planned that this Modification will be submitted for assessment well before the RCN Continuation Project is submitted.

### WHO IS THE BLOOMFIELD GROUP?

The Bloomfield Group is a proud Australian owned and operated mining and engineering group. We have been part of the community for more than 85 years. We employ local people and work with local small businesses to help our international customers to build, and power their economies.

We support the Singleton area by investing in various community projects through the Bloomfield Group Foundation.

### WHAT IS THE RIX'S CREEK NORTH CONTINUATION PROJECT?

The Project is seeking to recover additional coal resources that exist within the mining authorisations held by Bloomfield.

The Project will provide certainty for local jobs and significant economic benefit to Singleton as well as for both NSW and Australia.

The Project involves the continuation of operations to the west, which will require relocating and upgrading approximately four kilometres of the New England Highway to the north of Singleton.

The highway realignment would commence south of the intersection of McInerney Road at Camberwell and extend south towards Rixs Creek. If approved, Bloomfield will construct the new section of road in close consultation with Transport for NSW.

The existing highway will remain open while we build the new road alignment in order to minimise disruption to day to day traffic. We estimate this part of the Project would generate 60 jobs during construction.

The Project also includes:

- Continuation of mining operations to the north and west of the existing Falbrook Mining Area out to Middle Falbrook and Stony Creek Roads
- Maintaining the currently approved combined RCN peak raw coal extraction rate of six million tonnes per annum (i.e. the amount of resource extracted per annum will remain the same as currently approved)
- Revisions to the final landform, including changes to the number, location and volumes of the final voids allowing for enhanced future land use (predominantly for cattle grazing)
- Proposed mining operations within the Falbrook Pit (previously known as the North Open Cut) to be conducted 24 hours per day, 7 days per week
- Seeking approval to take overburden from RCN to RCS to improve rehabilitation outcomes
- Extending the life of mining operations at RCN from 2035 (current approval) until the end of 2049.

## PROJECT BENEFITS

The Hunter is the leading regional economy in Australia (NSW Government 2022), to which RCN is an important contributor. The existing social and economic benefits of the RCM would continue as a result of the extended mine life proposed by the Project. The Project would enable the continued annual expenditure of approximately \$170M in goods and services and the continued employment of approximately 250 Full Time Equivalent (FTE) employees, while supporting approximately 520 individual suppliers.

The Project is expected to generate:

- Additional taxation payable to both State (Payroll tax) and Commonwealth (Group tax) from the additional years of mining;

- Approximately 60 direct jobs during the construction of the New England Highway realignment;
- Royalties from the additional 63.5 Mt of ROM coal being mined;
- Corporate income tax payments from the additional years of mining;
- A final landform which will contain no high walls; and
- An upgraded, improved and more efficient alignment of the New England Highway.

## COMMUNITY CONSULTATION TO DATE

Project consultation with our community commenced as part of the development of our Scoping Report and will continue throughout the EIS and approval process.

A newsletter was distributed across the community in May this year and included a survey providing the opportunity for the identification of potential social impacts and benefits related to the Project for further investigation during the EIS phase.

We extend our thanks to everyone who took the time to complete the survey.

Various face-to-face briefings also occurred with key stakeholders such as Government agencies, our Community Consultative Committee and Singleton Council.

## ENVIRONMENTAL IMPACT STATEMENT

The preparation of the EIS has commenced in parallel with exploration works, monitoring and various environmental and community assessment activities. The specialist EIS technical studies include:

- Water Resources (surface water & groundwater);
- Ecology;
- Aboriginal Cultural and Historic Heritage;
- Air Quality and Greenhouse Gas;
- Acoustics (operating noise and blasting);
- Soils, Rehabilitation and Final Landform;
- Geochemistry;
- Traffic and Transport;
- Visual; and
- Socio-economics.

Studies will continue throughout the later part of 2023 and into 2024. We anticipate that the EIS will be submitted to DPE in the second half of 2024.

## HOW CAN YOU BE KEPT INFORMED?

Community engagement is an important component of the Project's planning and assessment process and there will be ongoing opportunities to provide input into the Project including through:

- Updates to our Community Consultative Committee
- Project newsletters
- The Bloomfield Group website, which includes a function to register for information: [https://www.bloomcoll.com.au/sustainability/environmental-management/rixs-creek-assessments/rcn\\_cont](https://www.bloomcoll.com.au/sustainability/environmental-management/rixs-creek-assessments/rcn_cont)
- Community information sessions
- Face-to-face meetings

### Community information sessions

Community information sessions on the Rix's Creek North Continuation Project will be held early next year in Singleton.

As the assessment progresses, Rix's Creek will be setting up a shopfront in Singleton to allow any community members to make an appointment to come and see us to have a face-to-face discussion about the Project. The Project Team will be on hand to answer your questions and can also provide more detail about the studies we are undertaking. Further details will be provided closer to the event.

The information sessions will be advertised locally and also communicated to those who have already registered for more information.

## OTHER KEY OPERATIONAL ACTIVITIES

### Reducing the noise output of our fleet

We have recently introduced some new equipment at RCM, including a number of new 793F haul trucks.

The trucks are more fuel efficient, therefore reducing diesel emissions, and are fitted with a specifically engineered sound attenuation package that is contributing to ongoing site noise compliance and minimising impact to our nearby communities.

The additional safety features on the trucks are also contributing to helping keep our workers safe.

## Supporting post-mining land use

Rix's Creek Mine recently hosted a Pasture Restoration Field Day that involved tours of our rehabilitation and information sharing focusing on pasture establishment.

With cattle grazing as our primary post-mine land use, the tour was a great occasion to show our commitment to providing a positive legacy for Upper Hunter communities post-mining, and was a wonderful opportunity for agronomists, mining industry personnel and other key stakeholders from government, local councils, and community groups to come together to share and discuss rehabilitated mine pasture research that can support continuous improvement.

## Ongoing employment

Our Trainee Operator program has been operating for many years and is one of the best in the valley. Two employees have just officially completed their two-year Trainee Operator program and have recently joined our team permanently. Three more trainees have just commenced.

## Purchase of Biodiesel Industries Australia

For many years, Bloomfield has been one of the three shareholders in Biodiesel Industries Australia (BIA), which specialises in the manufacture of biodiesel from used cooking oils.

We have moved to 100% ownership of BIA. Retaining and expanding our ownership of BIA is an important part of our interest in emissions reduction. It will allow us to continue to explore options to utilise biodiesel (and glycerine) within our business, including as fuel in our fleets.

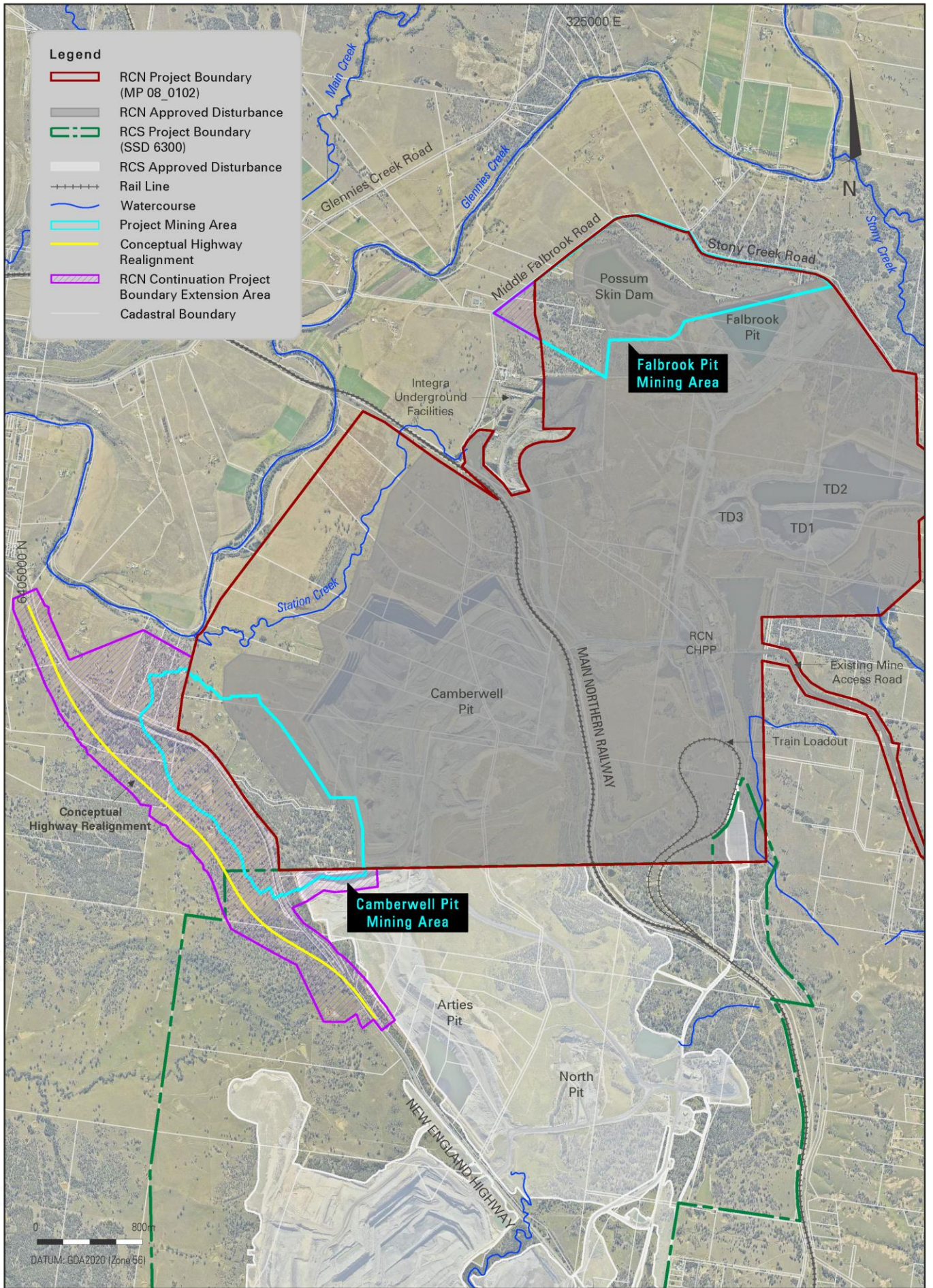
## FURTHER INFORMATION

If you have any questions in regard to the Project, EIS activities or our day-to-day operations please contact:

Geoff Moore - Chief Development Officer  
Bloomfield Collieries Pty Limited  
Phone: 02 4930 2600

Email: [rcncontinuation@bloomcoll.com.au](mailto:rcncontinuation@bloomcoll.com.au)  
Website: [www.bloomcoll.com.au](http://www.bloomcoll.com.au)





JBA 2158 - RCN (PS) - F 01 CONCEPTUAL PROJECT LAYOUT (26/10/2023)

RIXS CREEK NORTH CONTINUATION PROJECT

Conceptual Project Layout