

BLOOMFIELD COAL PROJECT

Noise Monitoring Program

Prepared for:

Bloomfield Collieries Pty Ltd
Four Mile Creek Road
Ashtonfield NSW 2323

SLR Ref: 630.01573-R03
Version No: -v4.3
March 2021



PREPARED BY

SLR Consulting Australia Pty Ltd
ABN 29 001 584 612
10 Kings Road
New Lambton NSW 2305 Australia
(PO Box 447 New Lambton NSW 2305 Australia)
T: +61 2 4037 3200 F: +61 2 4037 3201
E: newcastleau@slrconsulting.com www.slrconsulting.com

BASIS OF REPORT

This report has been prepared by SLR Consulting Australia Pty Ltd with all reasonable skill, care and diligence, and taking account of the timescale and resources allocated to it by agreement with Bloomfield Collieries Pty Ltd (the Client). Information reported herein is based on the interpretation of data collected, which has been accepted in good faith as being accurate and valid.

This report is for the exclusive use of the Client. No warranties or guarantees are expressed or should be inferred by any third parties. This report may not be relied upon by other parties without written consent from SLR

SLR disclaims any responsibility to the Client and others in respect of any matters outside the agreed scope of the work.

DOCUMENT CONTROL

Reference	Date	Prepared	Checked	Authorised
630.10573-R3-v4.5	15 March 2021	Greg Lamb	Chris Knight	Chris Knight
630.10573-R3-v4.4	15 January 2021	Martin Davenport	Shannon Harvey	Martin Davenport
630.10573-R3-v4.3	22 May 2020	Martin Davenport	Martin Davenport	Martin Davenport
630.10573-R3-v4.2	2 November 2018	Martin Davenport	Nathan Archer	Nathan Archer
630.01573-R3-v4.1	9 November 2017	Martin Davenport	Nathan Archer	Nathan Archer
630.01573-R03-v4.0	31 August 2017	Martin Davenport	Nathan Archer	Nathan Archer
630.01573R3R3	11 November 2013	Nicholas Vandenberg	John Cotterill	John Cotterill
630.01573-R3	30 September 2013	Nicholas Vandenberg	Nathan Archer	Nathan Archer

CONTENTS

1	INTRODUCTION.....	5
2	PROJECT APPROVAL.....	6
	2.1 Statement of Commitments	7
3	POTENTIAL NOISE IMPACTS AND MAJOR NOISE SOURCES.....	8
	3.1 Noise Sources.....	8
	3.2 Key Noise Monitoring Locations	8
4	NOISE MONITORING PROCEDURES	9
	4.1 General Requirements.....	9
	4.2 Operator Attended Noise Surveys	9
	4.3 Unattended Continuous Noise Logging	10
	4.4 Site Noise Levels Audits	10
	4.5 Integrated Noise Monitoring Protocol.....	10
5	INSTRUMENTATION AND MEASUREMENT PARAMETERS	11
	5.1 Operator Attended Surveys and Unattended Logging	11
	5.2 Meteorological Parameters	11
	5.3 Plant and Equipment Observations and Log.....	11
6	COMPLIANCE MODELLING METHODOLOGY	12
7	DATA ANALYSIS.....	13
	7.1 Determining Compliance	13
	7.1.1 Operator Attended Noise Survey Results	13
	7.1.2 Unattended Continuous Noise Logging	13
	7.1.3 Noise Compliance Model	13
8	REPORTING.....	14
	8.1 Noise Monitoring Report	14
	8.2 Reporting Non-Compliances.....	14
9	COMMUNITY INFORMATION AND COMPLAINTS.....	15

CONTENTS

DOCUMENT REFERENCES

TABLES

Table 1	Operational Noise Impact Assessment Criteria.....	6
Table 2	Condition 4 Monitoring	7
Table 3	Nearest Potentially Affected Receiver Locations to Surrounding Coal Mines	8
Table 4	Noise Monitoring Locations	9
Table 5	Meteorological Measurement Parameters	11

APPENDICES

Appendix A	Location Map
Appendix B	Sound Power Levels
Appendix C	Consultation and Department Approval

1 Introduction

SLR Consulting Australia Pty Ltd (SLR) was engaged to update the operational Noise Monitoring Program (NMP) for the Bloomfield Colliery in accordance with Project Approval 07_0087 (PA 07_0087), as modified.

This update to the NMP has been prepared to satisfy Schedule 5 Condition 4 of PA 07-0087 which requires an update to the NMP within 3 months of any modification to the approval. The Bloomfield Coal Project Life of Mine Extension – Modification 4 (MOD 4) was approved in August 2018.

The objectives of the NMP are to fulfil the requirement of Schedule 3 Condition 4 of PA 07_0087 and Section 11 of the Statement of Commitments contained within the Bloomfield Colliery Part 3A Environmental Assessment (The Bloomfield Group 2008).

The objectives of the NMP are to:

- Demonstrate that compliance with the project approval conditions can be achieved.
- Identify potential noise sources and their relative contribution to noise impacts from the development.
- Outline the methodologies to be used, including justification for monitoring intervals, weather conditions, seasonal variations, monitoring locations, periods and times of measurements, the design of any noise modelling or other studies, including the means for determining the noise levels emitted by the development.
- Integrate the Bloomfield NMP with monitoring programs for the Donaldson and Abel mines.

2 Project Approval

The relevant conditions relating to noise from PA 07_0087 MOD 4 are reproduced below.

Schedule 3 NOISE

Noise Impact Assessment Criteria

1. *The Proponent shall ensure that the noise generated by the project does not exceed at any residence on privately-owned land, or on more than 25% of any privately-owned land, the noise impact assessment criteria shown in Table 1 for the monitoring location nearest to that residence or land:*

Table 1 Operational Noise Impact Assessment Criteria

Morning Shoulder	Day	Evening	Night		Location and Locality	
L _{Aeq} (15min)	L _{Aeq} (15min)	L _{Aeq} (15min)	L _{Aeq} (15min)	L _{A1} (1min)		
40	35	35	35	45	E	Browns Road, Black Hill
42	35	35	35	45	F	Black Hill Road, Black Hill
43	39	42	37	45	G	Buchanan Road, Buchanan
35	35	35	35	45	H	Mt Vincent Road, Louth Park
35	35	35	35	45	L	Kilshanny Avenue, Ashtonfield
48	39	39	37	46	M	John Renshaw Drive, Buttai
43	42	42	35	46	N	Lings Road, Buttai

Notes

- To interpret the locations in Table 1, see Appendix 2.

However, if the Proponent has a written negotiated noise agreement with the landowner of any land, and a copy of this agreement has been forwarded to the Department and EPA, then the Proponent may exceed the noise limits in Table 1 on that land in accordance with the negotiated noise agreement.

Cumulative Noise Criteria

2. *The Proponent must take all reasonable and feasible measures to ensure that the noise generated by the project combined with the noise generated by other mines does not exceed the following amenity criteria at any residence on, or on more than 25 percent of, any privately owned land:*

- L_{Aeq}(11 hour) 50 dB(A) – Day;
- L_{Aeq}(4 hour) 45 dB(A) – Evening; and
- L_{Aeq}(9 hour) 40 dB(A) – Night.

Continuous Improvement

3. *The Proponent must:*

- implement all reasonable and feasible noise mitigation measures;*
- investigate ways to reduce the noise generated by the project; and*

(c) report on these investigations and the implementation and effectiveness of these measures in the Annual Review, to the satisfaction of the Secretary.

It is noted that currently there are no agreements in place with any landowners.

Monitoring

Schedule 3 Condition 4 of PA 07_0087, stipulates the conditions of this NMP. The conditions, along with where they are addressed in this document are presented in **Table 2**.

Table 2 Condition 4 Monitoring

Condition Requirement	NMP Reference
The proponent must prepare and implement a noise and Monitoring Program for the project to the satisfaction of the Secretary. The Program must:	
(a) Be prepared in consultation with the EPA and be submitted to the Secretary for approval within 6 months of the date of this approval; and	Appendix C
(b) Include: <ul style="list-style-type: none"> a combination of unattended and attended monitoring measures; and 	Section 4
<ul style="list-style-type: none"> a noise monitoring protocol for evaluating compliance with the noise impact assessment criteria in this approval. 	Section 6, Section 7 and Section 8.

The Proponent must implement the Noise Monitoring Program as approved by the Secretary

Approval of the previous the Noise Monitoring Program is provided in **Appendix C**.

2.1 Statement of Commitments

Section 8 of the MOD4 EIS contains the following Statement of Commitment with regard to noise and blasting at the site:

7 Noise

Bloomfield would continue to implement noise and blasting management measures in accordance with the Noise Monitoring Plan and the Blasting Monitoring Program currently utilised at the Colliery to minimise the noise and vibration impacts to surrounding receivers. This includes scheduling of mining operations with regard to predicted weather conditions. During reduced night-time operations under prevailing weather conditions, potential noise impacts at Location M would be minimised by undertaking coal haulage via the alternate haul road (that is, Scenario 2). The Noise Monitoring Plan and Blasting Monitoring Program would continue to be implemented for the duration of the Project and would be updated to reflect the Project as required.

Statement of Commitment 11.3 as included in Appendix 3 of PA 07_0087 MOD 4 is as follows:

11.3 Bloomfield may undertake a noise monitoring and investigation program during the Project, in consultation with OEH and the Department, to determine whether relevant noise criteria can be achieved without the use of the noise controls listed in 11.2. If such a study concludes that relevant criteria can be achieved, the above controls will be modified or removed.

3 Potential Noise Impacts and Major Noise Sources

3.1 Noise Sources

In order to minimise noise impacts from the various items of plant and equipment, particularly during night-time operations, the noise levels of the major items of plant and equipment will be monitored before they are installed. The sound power level of plant and equipment should not be greater than the modelled design sound power levels set out in the *Bloomfield Colliery Modification Noise and Vibration Impact Assessment* (SLR report 630.01573-R01 dated 19 November 2017 and presented in **Appendix B**).

If the sound power level of equipment is determined to be higher than assumed in the assessment prediction of the noise impact of this equipment may be required. Further mitigation of the equipment may be required before installation if the prediction results in an exceedance of the approval conditions.

All sound power measurement procedures of the plant and equipment shall be guided by the following standards where appropriate:

- ISO 6395:2008(E) “Earth-moving machinery - Determination of sound power level noise emissions - Dynamic test conditions”; and
- ISO 3744-2010 “Acoustics – Determination of sound power levels and sound energy levels of noise sources using sound pressure – Engineering methods for an essentially free field over a reflecting plane”.

3.2 Key Noise Monitoring Locations

The nearest potentially affected residential areas beyond the boundaries of the mining operations are shown in **Appendix A**. The key monitoring locations representative of the surrounding receivers, and identified in the respective approvals for the operations, are to be used for evaluating and assessing noise emissions from mining operations. **Table 3** presents the receiver identifier and location together with the most significant mining operation affecting each location.

Table 3 Nearest Potentially Affected Receiver Locations to Surrounding Coal Mines

Receiver Identifier	Receiver Location	Respective Focus Operation
A	Weakleys Drive, Beresfield	Donaldson
B	Yarram Avenue, Beresfield	Donaldson
C	Ebenezer Park	Donaldson
D	Black Hill School	Donaldson, Abel
E	Browns Road, Black Hill	Donaldson, Abel, Bloomfield
F	John Renshaw Drive, Black Hill	Donaldson, Abel, Bloomfield

Receiver Identifier	Receiver Location	Respective Focus Operation
G	Buchanan	Abel, Bloomfield
H	Louth Park	Abel, Bloomfield
I	Ashtonfield	Abel, Bloomfield
J	Thornton	Abel, Bloomfield
K	Catholic Diocese of Maitland, formerly Bartter Enterprises	Donaldson, Abel
L	Kilshanny Ave, Ashtonfield	Bloomfield
M	John Renshaw Drive, Buttai	Bloomfield
N	Lings Road, Buttai	Bloomfield

4 Noise Monitoring Procedures

4.1 General Requirements

The noise measurement procedures employed throughout the monitoring program shall be guided by the requirements of AS 1055-1997 “Acoustics - Description and Measurement of Environmental Noise” and the NSW Noise Policy for Industry.

Noise monitoring will be conducted on a quarterly basis and consist of continuous unattended and operator attended noise monitoring. Any review of the frequency of monitoring will be undertaken in consultation with the Department and the EPA as appropriate.

4.2 Operator Attended Noise Surveys

Significant noise modelling and monitoring has been conducted for the seven (7) locations identified within **Table 1** of PA 07_0087 and locations A to N identified in **Table 3**. With this experience, five (5) noise monitoring locations have been identified that represent the potentially most affected areas from noise emissions from Bloomfield Colliery operations. The details of the monitoring locations are given in **Table 4**.

Table 4 Noise Monitoring Locations

Noise Monitoring Location	Description
F	Lot 684 Black Hill Road, Black Hill
G	156 Buchanan Road, Buchanan
L	Kilshanny Avenue, Ashtonfield
M	John Renshaw Drive, Buttai
N	Lings Road, Buttai

Operator-attended noise measurements shall be conducted at the locations given in **Table 4** to quantify and characterise the maximum (L_{Amax}), the energy equivalent (L_{Aeq}), average maximum (L_{A10}) and background (L_{A90}) noise levels from ambient noise sources and Bloomfield mining operations over a 15 minute measurement period.

During attended monitoring, digital recordings will be conducted to allow for additional post analysis of the mine contributed $L_{Aeq}(15\text{minute})$, $LA_{10}(15\text{minute})$ and $LA_1(1\text{minute})$ noise levels and to assist in source identification.

4.3 Unattended Continuous Noise Logging

In order to supplement the operator-attended measurements, unattended continuous noise monitoring shall be conducted at Locations F, G, L, M and N, for a minimum period of seven (7) days per quarter, to quantify overall ambient noise amenity levels resulting from mining and other environmental noise sources. Data from unattended continuous noise logging will allow trends to be identified in ambient noise levels surrounding the mine and the assessment of cumulative noise impacts from all mining related noise sources in the area.

The monitoring locations chosen should be representative of noise emissions from Bloomfield mining operations in order to determine compliance with the approval conditions and/ or allow the contributed noise level to be calculated at the nominated assessment locations.

As location N is predominately dominated by road traffic along John Renshaw Drive, the unattended noise monitoring will instead be conducted at 699 John Renshaw Drive due to the proximity of the Bloomfield operations. This will allow a Bloomfield noise contribution to be measured at this location and the Bloomfield contribution to be calculated at Location N.

4.4 Site Noise Levels Audits

The noise monitoring program will include regular noise surveillance measurements of acoustically significant plant and equipment, to ensure that they remain within the specified compliance levels.

4.5 Integrated Noise Monitoring Protocol

Noise Monitoring Programs have also been prepared for the Donaldson and Abel mines. The NMPs of these operations are integrated with the Bloomfield NMP, where applicable, in order to determine compliance of each of the operations with their consent conditions and to determine compliance with the cumulative noise criteria as per Schedule 3 Condition 2 of PA 07_0087.

Noise monitoring for the Donaldson and Abel coal mines is conducted on a quarterly basis in conjunction with the Bloomfield quarterly noise monitoring to increase the efficiency of the monitoring programs and to allow determination of cumulative noise levels. Furthermore, in addition to the noise monitoring locations provided in **Table 4**, attended and unattended noise monitoring is undertaken on a quarterly basis at Locations D, I and J for the Donaldson and Abel Coal mines.

Noise compliance is reported to the individual operations with comment made to overall cumulative noise levels.

Reporting of non-compliances to the DPI&E is made by the individual operations and is outlined in Section 8.2.

5 Instrumentation and Measurement Parameters

5.1 Operator Attended Surveys and Unattended Logging

All acoustic instrumentation employed throughout the monitoring program shall meet with the requirements of AS IEC 61672.1 – 2004 *Electroacoustics—Sound level meters - Specifications*”.

Portable sound level meters used for operator attended noise monitoring should be capable of conducting real time third octave analysis.

Noise loggers shall be programmed to continuously record statistical noise level indices in 15 minute intervals which may include the L_{Amax} , L_{A1} , L_{A5} , L_{A10} , L_{A90} , L_{A99} , L_{Amin} and the L_{Aeq} .

Instrument calibration shall be checked before and after each measurement survey, with the variation in calibrated levels not to exceed ± 0.5 dBA.

5.2 Meteorological Parameters

All noise measurements shall be accompanied by both qualitative description (including cloud cover for night time measurements) and quantitative measurements of prevailing local weather conditions throughout the survey period.

Meteorological measurements shall be guided by the requirements of AS 2923-1987 “*Ambient Air-Guide for Measurements of Horizontal Wind for Air Quality Applications*” and the EPA. The automatic weather station situated on the Bloomfield mine site is programmed to continuously record the meteorological parameters as shown in **Table 5**.

Table 5 Meteorological Measurement Parameters

Measured Parameter	Unit	Sample Interval
Mean wind speed	km/h	10 minute
Mean wind direction	Degrees	10 minute
Aggregate rainfall	mm	10 minute
Mean air temperature	C°	10 minute
Relative Humidity	%	10 minute

5.3 Plant and Equipment Observations and Log

During the attended noise measurements, the operator shall record any significant mine generated noise sources (ie haul trucks, dozers, etc). In addition, the operator shall obtain copies of the relevant fixed plant and mobile equipment mining operating shift logs to be included in the noise monitoring report.

6 Compliance Modelling Methodology

A computer noise model was developed as part of the noise impact assessment for the Bloomfield Project. The computer model incorporated the significant noise sources and their design sound power levels associated with the proposed development and the surrounding terrain, aspects of the built environment and nearby receiver areas.

The computer model was prepared using SoundPLAN v7.4 software. As part of the noise monitoring program, a compliance noise model will be maintained containing all significant noise sources on the site. The compliance noise model will be used to assist in defining compliance issues, if they arise.

This will assist in developing a calibrated noise model for site which will allow an accurate forecast of any future development or significant events that may occur on the site.

7 Data Analysis

7.1 Determining Compliance

7.1.1 Operator Attended Noise Survey Results

The $L_{Aeq(15\text{minute})}$ noise level contributions from all mining operations as well as the overall ambient noise levels together with the weather and mine operating conditions shall be reported on a quarterly basis.

The contributed noise emissions from mining operations shall be evaluated and assessed against the noise level criteria given in PA 07_0087. Compliance may be determined by:

- direct measurement of the consent criteria - $L_{Aeq(15\text{minute})}$;
- operator estimated $L_{Aeq(15\text{minute})}$ contribution;
- operator estimated $LA_{1(1\text{minute})}$ contribution;
- by calculation from near field measurements;
- from post analysis of audio recordings;
- by measurement at a representative location;
- predictions from the compliance noise model; or
- a combination of any or all the above methods.

7.1.2 Unattended Continuous Noise Logging

The unattended ambient noise logger data from each monitoring location, together with the weather and mine operating conditions shall be presented graphically on a daily basis and presented in the noise monitoring report.

It should be noted that the ambient noise levels do not necessarily reflect the contributed level of noise emissions from mining operations. The ambient noise level data quantifies the overall noise level at a given location independent of its source or character. The ambient noise monitoring data will provide indications of the cumulative noise emissions from all industrial noise sources and amenity levels.

Prior to further analysis, the ambient noise level data from each monitoring location which correlate with periods of unstable weather (i.e. rainfall greater than 0.5 mm or wind speed greater than 5 m/s) shall be discarded in accordance with NSW Noise Policy for Industry data exclusion methodology.

7.1.3 Noise Compliance Model

The noise compliance model output will provide predicted noise levels from the current operational scenario at all relevant assessment locations, which can then be compared to the measured noise levels and estimated mine contribution levels.

Additionally, the model output can be integrated into similar models for the other operations for the production of cumulative noise contours.

8 Reporting

8.1 Noise Monitoring Report

All routine monitoring results will be documented and reported initially on a quarterly basis. This information is also included in the Annual Review which is sent to the relevant authorities as listed in Schedule 5 Condition 3 of PA 07_0087.

Quarterly reports should consist of the following information.

- Summary of all attended and unattended noise monitoring results.
- Predicted noise levels at each assessment location from the compliance noise model (if necessary).
- Measured/ calculated and/or operator estimated Bloomfield mine $L_{Aeq}(15\text{minute})$ contributed noise levels for each monitoring location.
- Measured/ calculated and/or operator estimated Bloomfield mine $L_{A1}(1\text{minute})$ contributed noise levels for each monitoring location.
- Statement of compliance/ non-compliance.
- Details of any complaints relating to noise and their state of resolution.

8.2 Reporting Non-Compliances

In the event of a potential exceedance of the relevant noise emission criteria an investigation will be undertaken. Consideration will be given to the margin of exceedance and the source of emission, if it has been identified. The noise, weather and plant operating data shall be collated so that the matter can be investigated and appropriate actions undertaken accordingly.

Additional noise measurement methods such as near field monitoring or unattended noise monitoring may be utilised to investigate noise emissions in relation to noise complaints, or to determine compliance with the approval conditions where potential non-compliances have been measured or are difficult to quantify from routine operator-attended or unattended noise measurements.

The results of noise monitoring will be included in the Annual Review and posted on Bloomfield's website. Details of any exceedances and results of related investigations will be reported to the DPI&E as soon as possible in accordance with Condition 5 of Schedule 5 of the PA 07_0087.

Under the 2009 Bloomfield Open Cut Environmental Assessment (PA 07_0087) Bloomfield is responsible for the operation and management of the Bloomfield Coal Handling and Preparation Plant (CHPP) approved under the Abel Project Approval MP 05_0139. In the event of an exceedance of the relevant noise emission criteria for the CHPP and Rail Loading Facility (RLF) as outlined in the Abel Project Approval MP 05_0139, Bloomfield will report the exceedance to the DPI&E as soon as possible in accordance with Condition 6 of Schedule 5 of the PA 07_0087, and Condition 7 of Schedule 6 of MP 05_0139.

9 Community Information and Complaints

Information about the project is provided on Bloomfield's website. This includes details about blasting and general project information.

Bloomfield's Environmental Management Strategy details the procedures for addressing any complaints including noise issues that may be raised by the community. All complaints that are raised by the community and/or government agencies are recorded. Details for each are kept including:

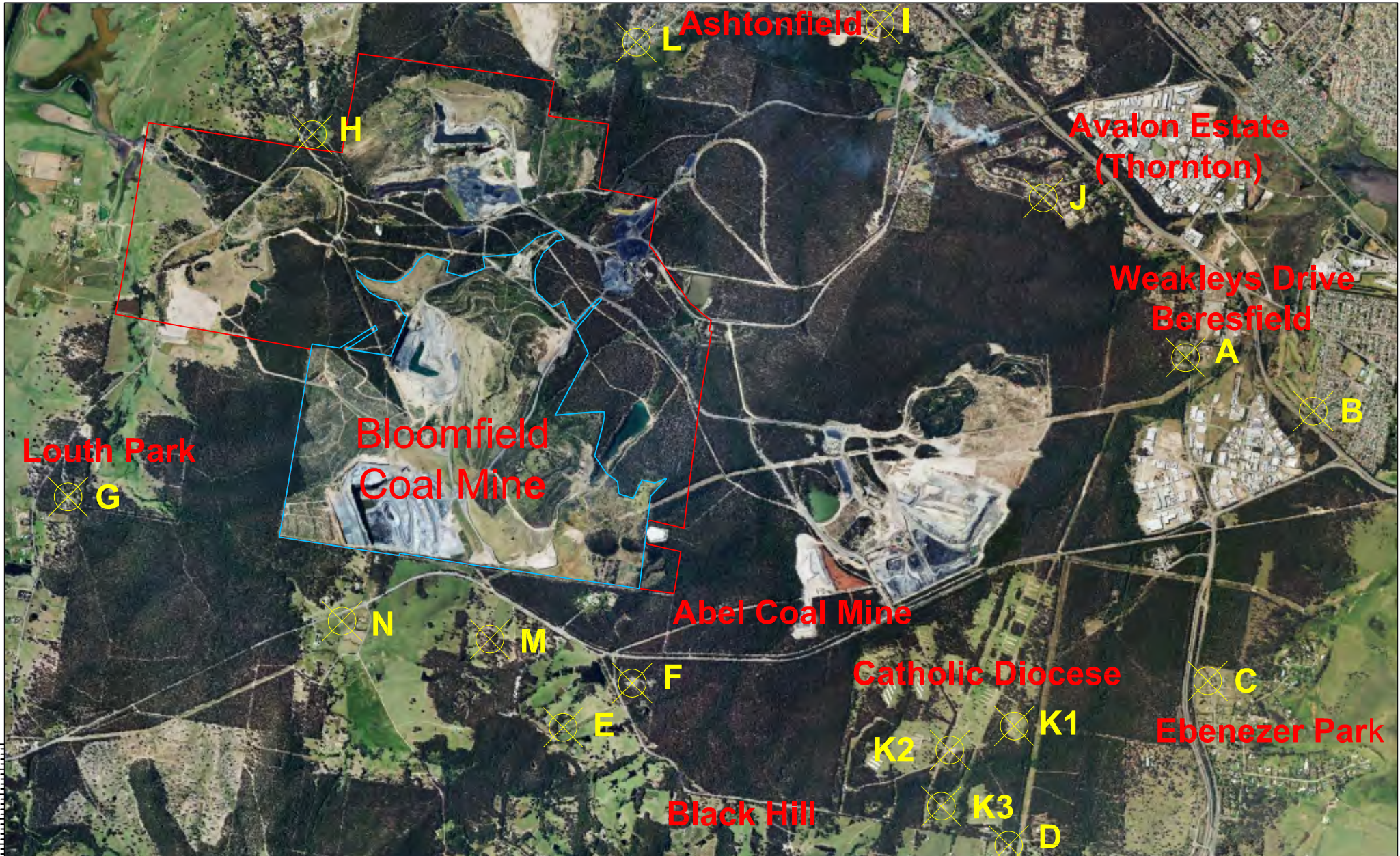
- Date and time of complaint.
- Method by which the complaint was made.
- Personal details of the complainant which were provided by the complainant or, if no such details were provided, a note to that effect.
- Nature of the complaint.
- The action(s) taken in relation to the complaint, including any follow up contact with the complainant; and
- If no action was taken, the reason why no action was taken.

The complainant will be followed up to explain the outcome of the investigations.

Bloomfield Coal Mine will also ensure that the Annual Review, minutes from Community Consultative Committee meetings and results and interpretation of monitoring and/or modelling required by the Project Approval are made available on the mine's website.

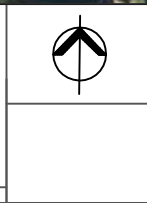
APPENDIX A

Location Map



50 mm ON ORIGINAL
150
140
130
120
110
100
90
80
70
60
50
40
30
20
10
0

0	6/5/07	v01r0	DW	JC
REV	DATE	AMENDMENT / ISSUE DESCRIPTION	PREPARED	CHECKED



- Assessed Receiver Location
- Modified Project Application Area
- CCL 761

SLR SLR Consulting Australia Pty Ltd
 Level 1, 14 Watt Street
 PO Box 1768
 Newcastle NSW 2300
 newcastleau@slrconsulting.com
 Telephone 02 4908 4500 Facsimile 02 4908 4501

FILE NAME:
630.01573-R3R1 Appendix A

Appendix A
 Bloomfields Noise & Blasting
 Impact Assessment
 Location Map

DRAWING No.
001

REVISION
0

APPENDIX B

Sound Power Levels

Equipment Description	Sound Power Level (SWL) Octave Band Centre Frequency (Hz) - dBA re 1pW										dBA Overall SWL
	31.5	63	125	250	500	1k	2k	4k	8k	16k	
Hitachi Excavator 5500	54	78	96	103	103	109	110	108	102	90	115
Caterpillar Rear Dump Trucks 789	67	82	93	103	106	106	105	104	96	81	112
Caterpillar 777 Watercart	67	82	93	103	106	106	105	104	96	81	112
Caterpillar Rear Dump Trucks 793	66	82	101	100	108	108	106	100	92	78	113
Caterpillar Front End Loader 992	77	90	99	103	103	106	107	110	104	91	114
Caterpillar Dozer D11	84	97	104	113	113	109	110	103	98	83	118
Caterpillar Dozer D10	84	97	104	113	113	109	110	103	98	83	118
Caterpillar Grader 24G	71	84	98	99	104	106	105	106	101	92	112
SK75 Drill	66	83	95	103	111	111	110	106	99	85	116
SK50 Drill	58	75	89	100	107	107	107	103	98	86	113

APPENDIX C

Consultation and Department Approval



**Environment,
Climate Change
& Water**

S3 C4
OEU Consultation,

Your reference: DECCW/001KH
Our reference: DOC10/15469, LIC09/250
Contact: Mitchell Bennett, 02 4908 6806

The Bloomfield Group
PO Box 4
EAST MAITLAND NSW 2323

23 APR 2010

Attention: Ms Keren Halliday

Dear Ms Halliday

**Bloomfield Colliery
Noise Monitoring Program, Air Quality Monitoring Plan and Blast Monitoring Program**

Thankyou for forwarding the above programs for our records. The Department of Environment, Climate Change and Water (DECCW) encourages the development of such programs to ensure that proponents have determined how they will meet their statutory obligations. However, DECCW does not review these documents as all DECCW monitoring requirements are specified in your Environment Protection Licence.

Should you have any questions please phone me on 02 4908 6806.

Yours sincerely

MITCHELL BENNETT
Head Regional Operations Unit – Hunter Region
Environment Protection and Regulation



Chris Knight
Environment Manager
The Bloomfield Group
PO Box 4
East Maitland NSW 2323

31/03/2021

Dear Mr Knight

**Bloomfield Coal Mine (MP 07_0087)
Noise Monitoring Program**

I refer to the Noise Monitoring Program which was submitted to the Department as required under the conditions of MP 07_0087 (as modified) for the Bloomfield Coal Mine.

The Department has carefully reviewed the document and is satisfied that it adequately clarifies the responsibilities for the management, monitoring and reporting of noise impacts associated with operation of the Bloomfield Coal Handling Preparation Plant (CHPP) and Rail Loading Facility (RLF).

Accordingly, the Planning Secretary has approved the Noise Monitoring Program (version 4.5, dated March 2021). Please ensure that the approved plan is placed on the project website at your earliest convenience.

If you wish to discuss the matter further, please contact James McDonough on (02) 9585 6313 or at james.mcdonough@dpie.nsw.gov.au.

Yours sincerely

A handwritten signature in blue ink, appearing to be 'LE', written over a light blue horizontal line.

Lauren Evans
A/Director
Resource Assessments (Coal & Quarries)

As nominee of the Planning Secretary

ASIA PACIFIC OFFICES

BRISBANE

Level 2, 15 Astor Terrace
Spring Hill QLD 4000
Australia
T: +61 7 3858 4800
F: +61 7 3858 4801

MACKAY

21 River Street
Mackay QLD 4740
Australia
T: +61 7 3181 3300

ROCKHAMPTON

rockhampton@slrconsulting.com
M: +61 407 810 417

AUCKLAND

68 Beach Road
Auckland 1010
New Zealand
T: +64 27 441 7849

CANBERRA

GPO 410
Canberra ACT 2600
Australia
T: +61 2 6287 0800
F: +61 2 9427 8200

MELBOURNE

Suite 2, 2 Domville Avenue
Hawthorn VIC 3122
Australia
T: +61 3 9249 9400
F: +61 3 9249 9499

SYDNEY

2 Lincoln Street
Lane Cove NSW 2066
Australia
T: +61 2 9427 8100
F: +61 2 9427 8200

NELSON

5 Duncan Street
Port Nelson 7010
New Zealand
T: +64 274 898 628

DARWIN

5 Foelsche Street
Darwin NT 0800
Australia
T: +61 8 8998 0100
F: +61 2 9427 8200

NEWCASTLE

10 Kings Road
New Lambton NSW 2305
Australia
T: +61 2 4037 3200
F: +61 2 4037 3201

TAMWORTH

PO Box 11034
Tamworth NSW 2340
Australia
M: +61 408 474 248
F: +61 2 9427 8200

NEW PLYMOUTH

Level 2, 10 Devon Street East
New Plymouth 4310
New Zealand
T: +64 0800 757 695

GOLD COAST

Ground Floor, 194 Varsity
Parade
Varsity Lakes QLD 4227
Australia
M: +61 438 763 516

PERTH

Ground Floor, 503 Murray Street
Perth WA 6000
Australia
T: +61 8 9422 5900
F: +61 8 9422 5901

TOWNSVILLE

Level 1, 514 Sturt Street
Townsville QLD 4810
Australia
T: +61 7 4722 8000
F: +61 7 4722 8001