



**Resources
Regulator**

ARR0001649

DONALDSON OPEN CUT COAL MINE ANNUAL REHABILITATION REPORT

Friday 1 November 2024 to Friday 31 October 2025

Summary table

Detail	
Mine	Donaldson Open Cut Coal Mine
Reference	ARR0001649
Annual report period commencement date	Friday 1 November 2024
Annual report period end date	Friday 31 October 2025
Forward program	FWP0001528
Mining leases	ML 1461 (1992)
Lease holder(s)	Bloomfield Collieries Pty Ltd
Contact	Steven Vickers
Date of submission	Friday 30 January 2026
Document URL	https://www.bloomcoll.com.au/sustainability/environmental-management/donaldson-abel-mine

Security reminder: Please exercise caution before opening external links. If a link appears suspicious, avoid clicking it and report it to the Resources Regulator.

Important

The department may make the information in your program and any supporting information available for inspection by members of the public, including by publication on its website or by displaying the information at any of its offices. If you consider any part of your program to be confidential, please communicate this to the department via the message function on this submission within the Resources Regulator Portal.

Mine Details

Project description

The Donaldson Mine was acquired by the Bloomfield Group in 2025. The Bloomfield Group also owns and operates the Abel Underground Coal Mine, with surface facilities partly integrated with the Donaldson Mine Site and underground mining operations occurring immediately south of the Donaldson Mine Site. Development consents DA 98/01173 and DA 118/698/22 for the Donaldson Mine were granted in December 1999. Development commenced January 2001 and the first coal was dispatched during March 2001. Consent for mining operations lapsed on 31 December 2013, however, certain conditions, including rehabilitation requirements, continue to apply without a specified approval lapse date.

Life of mine

21 years

Current development consents, leases and licences

Development consents granted under the *Environmental Planning and Assessment Act 1979*



Authorisations covering the mining area granted under the *Mining Act 1992*

ML 1461 (1992)

Any other approvals, licences, or authorities issued by government agencies that are relevant to the progress of mining operation and rehabilitation activities

Summary of the scope and/or purpose of the new applications or modifications to existing approvals (if applicable)

NA

Changes to land ownership and land use

Yancoal remained the owner of the land during the reporting period. After the reporting period, Bloomfield Collieries Pty Ltd purchased all the land associated with the Donaldson operation.

Surface disturbance and rehabilitation activities during the reporting period

Surface disturbance and rehabilitation activities that were conducted and an analysis of the progress against the rehabilitation schedule

As the Donaldson Mine is under care and maintenance, no disturbance has occurred and the remaining 'operational' areas of the Donaldson Mine will not be available for rehabilitation prior to closure of the Abel Mine. As such, opportunities for further progressive rehabilitation are limited. Rehabilitation progress is consistent with the previous Forward Program and the development consent.

Rehabilitation planning activities that were conducted, including any specialist studies

Rehabilitation planning activities were limited to the rehabilitation (including flora and fauna) monitoring studies conducted to determine future actions required prior to relinquishment.

Overview of subsidence repair and/or remediation works undertaken

No areas affected by subsidence are located within the Donaldson Mine Site.

Overview of rehabilitation management and maintenance activities

Management of weeds, i.e., Lantana and Pampas Grass, was undertaken within the previously rehabilitated areas. Feral animal control was also undertaken in Spring 2024 and Spring 2025.

Details of any rehabilitation actions taken as required by any letters, notices or directions issued by government agencies, including the Resources Regulator

The NSW Resources Regulator conducted a Revegetation Targeted Assessment Program (TAP) during the reporting period. As a result

of the TAP, the Donaldson Coal Mine received correspondence (LETT0010550) requiring an Action Plan be developed addressing a number of recommendations from the inspection. In the next reporting period, Donaldson Coal Mine will provide an Action Plan to the Resources Regulator that addresses the recommendations of the TAP.

Details of any rehabilitation areas that have achieved the final land use

No areas of the mine site achieved the final land use / fulfilled all rehabilitation obligations during the reporting period.

Key production milestones

MATERIAL	UNIT	FWP0001528 YEAR1		THIS REPORT
Stripped topsoil (if applicable)	(m ³)	0		0
Rock/overburden	(m ³)	0		0
Ore	(Mt)	0		0
Reject material ¹	(Mt)	0		0
Product	(Mt)	0		0

¹This includes coarse rejects, tailings and any other wastes resulting from beneficiation.

Disturbance and rehabilitation statistics

Current disturbance and rehabilitation progression

ELEMENT		UNIT	THIS REPORT
A1	Total disturbance footprint - surface disturbance	(ha)	303.12
B	Total active disturbance	(ha)	82.76
C	Rehabilitation - land preparation	(ha)	0
D	Ecosystem and land use establishment	(ha)	0
E	Ecosystem and land use development	(ha)	220.36
F	Rehabilitation completion	(ha)	0

Rehabilitation key performance indicators (KPIs)

ELEMENT		UNIT	THIS REPORT
G	New disturbance area	(ha)	0
H	New rehabilitation commenced during annual reporting period	(ha)	-50.52
I	Established rehabilitation	(ha)	220.36
J	Annual rehabilitation to disturbance ratio	%	
K	Rehabilitated land to total mine footprint	%	72.7

Progressive achievement of established rehabilitation

ELEMENT		UNIT	THIS REPORT
L	Established rehabilitation for agricultural final land uses	%	0
M	Established rehabilitation for native ecosystem final land uses	%	100
N	Established rehabilitation for other/non-vegetated final land uses	%	0

Variation to the rehabilitation schedule

Identify the components of the most recent forward program that were not achieved

NA

Key factors that delayed progressive rehabilitation

NA

Outline actions that will be included in the forward program and carried out to minimise disturbance and undertake progressive rehabilitation as far as reasonably practical

NA

Rehabilitation monitoring and research findings

Rehabilitation monitoring

The rehabilitation monitoring carried out in the annual reporting period

Rehabilitation monitoring, principally assessing flora, fauna, soil, and stability parameters, was undertaken at the Mine during the reporting period building upon ~20 years of monitoring data. Feral animal control and weed control was also undertaken within the previously rehabilitated areas of the Mine. To date, the monitoring has found that several of the rehabilitated areas have already met the previous completion criteria, excepting the need for further weed control, and that all rehabilitated areas assessed are on track to meet the previously required completion criteria.

Status of performance against rehabilitation objectives and rehabilitation completion criteria

The monitoring program that has been implemented

The monitoring has found that several of the rehabilitated areas have already met the previous completion criteria and that all rehabilitated areas assessed are on track to meet the previously required completion criteria. However, monitoring has confirmed that further weed control (Lantana and Pampas Grass) is required prior to relinquishment. Formal monitoring against the proposed completion criteria will be undertaken following approval by the Resources Regulator.

Are all rehabilitation areas in Landform Establishment phase or higher represented in the monitoring program to assess performance against the rehabilitation objectives and approved or, if not yet approved rehabilitation completion criteria and final landform and rehabilitation plan?

No

Year rehabilitation areas will be included as part of the monitoring program

2027

An appraisal of whether rehabilitation is moving towards achieving the proposed rehabilitation objectives, approved or, if not yet approved, rehabilitation completion criteria and final landform and rehabilitation plan as soon as reasonably practicable.

Areas of rehabilitation are generally moving towards achieving the final land use as soon as reasonably practicable with some maintenance required to ensure weeds are controlled. It is noted that the remaining active areas will not be able to move into rehabilitation until the cessation of mining at the Abel Underground Mine.

Appraisal description

Rehabilitation is moving towards achieving the final land use as soon as reasonably practicable.

Rehabilitation monitoring program findings

Rehabilitation monitoring during the reporting period generally found that rehabilitated areas are on a trajectory to achieve the rehabilitation completion criteria outlined in the RMP (including flora, fauna, soil and stability parameters), however, most areas require additional weed control works for Lantana and Pampas Grass. In the next reporting period, Donaldson Coal Mine will review the sites rehabilitation completion criteria and submit to the Resources Regulator for approval.

Performance issues and their causes including identification of any knowledge gaps that must be addressed

Weed (i.e. Lantana and Pampas Grass) dominance in some of the rehabilitation area must be rectified to ensure rehabilitation progresses toward achieving the rehabilitation completion criteria and achieving relinquishment. Monitoring has not identified any knowledge gaps with required weed control measures well understood and currently being implemented.

Outcomes of rehabilitation research and trials

RRT NUMBER	PROJECT/TRIAL NAME	OBJECTIVE OF TRIAL/PROJECT	METHODOLOGY	EXPECTED DATE OF COMPLETION	STATUS	ON TRACK?
---------------	-----------------------	----------------------------	-------------	--------------------------------	--------	--------------

Outcomes of completed trials and research

N/A

Attachment 1 - Reporting Definitions

REPORTING CATEGORY		DEFINITION
A1	Total disturbance footprint - surface disturbance	<p>All areas within a mining lease that either have at some point in time or continue to pose a rehabilitation liability due to surface disturbance activities.</p> <p>The total disturbance footprint is the sum of the total active disturbance, decommissioning, landform establishment, growth medium development, ecosystem and land use establishment, ecosystem and land use development and rehabilitation completion (see definitions below).</p> <p>Underground mining operations should not include the footprint of underground mining areas/subsidence management areas in the total disturbance footprint.</p>
A2	Underground Mining Area	Underground mining operations areas/subsidence management areas.
B	Total active disturbance	Includes on-lease exploration areas, stripped areas ahead of mining, infrastructure areas, water management infrastructure, sewage treatment facilities, topsoil stockpile areas, access tracks and haul roads, active mining areas, waste rock emplacements (active/unshaped/in or out-of-pit), tailings dams (active/unshaped/uncapped) and temporary stabilised areas (e.g. areas sown with temporary cover crops for dust mitigation and temporary rehabilitation).
C	Rehabilitation - land preparation	Includes the sum of all disturbed land within a mining lease that have commenced any, or all, of

REPORTING CATEGORY		DEFINITION
		<p>the following phases of rehabilitation - decommissioning, landform establishment and growth medium development.</p> <p>Refer to the glossary of terms in this document for the definition of these phases of rehabilitation.</p>
D	Ecosystem and land use establishment	<p>Includes the area which has been seeded/planted with the target vegetation species for the intended final land use. However, vegetation has not matured to a stage where it can be demonstrated that it will be sustainable for the long term and or require only a maintenance regime consistent with target reference/analogue sites.</p> <p>Typically, rehabilitation areas would be in this phase for at least two years (and usually more) before rehabilitation can be classified as being in the ecosystem and land use development phase. This phase does not apply to infrastructure areas that are being retained as part of final land use for the site.</p>
E	Ecosystem and Land Use Development	<p>Rehabilitation has matured to a level where target revegetation outcomes are on a trajectory towards meeting the final rehabilitation objectives and rehabilitation completion criteria (as verified by monitoring).</p> <p>This phase includes infrastructure areas that are to be retained for an approved post mining land use, following completion of all necessary measures to render the infrastructure fit for this purpose (for example structural integrity).</p>

REPORTING CATEGORY		DEFINITION
F	Rehabilitation Completion	The Resources Regulator has determined in writing that the mining area has achieved the approved rehabilitation objectives and approved rehabilitation completion criteria and final landform and rehabilitation plan following the submission of Form: <i>Rehabilitation completion and/or review of rehabilitation cost estimate and/or notification of mine or petroleum site closure</i> .
G	New active disturbance area	The area of any new active disturbance that has been created during the annual reporting period (definition A1 in Table 5).
H	New rehabilitation commenced during annual reporting period	The sum of any new rehabilitation commenced in the annual reporting period. These areas may be in the rehabilitation land preparation phase or the ecosystem & land use establishment phase (definitions C and D in Table 5).
I	Established rehabilitation (hectares)	The total area of land that is verified to be within either the ecosystem and land use development phase or the rehabilitation completion phase (definitions E & F in Table 5).
J	Annual rehabilitation to disturbance ratio	The rehabilitation to disturbance ratio (H/G) indicates how many hectares of new rehabilitation are undertaken for each hectare of land disturbed during the year. A ratio of 1/1 indicates that the area of new rehabilitation and disturbance in that year are the same.
K	% Rehabilitated land to total mine footprint	The proportion of the total mine footprint (area of land that has been disturbed by past or present surface disturbance activities) that has established rehabilitation ($I/A1 \times 100$). For open cut mining, the proportion of the total mine footprint verified to be "established rehabilitation" should substantially increase as an operation progresses towards mine closure.

REPORTING CATEGORY		DEFINITION
L	Established rehabilitation for agricultural final land uses (hectares)	The percentage of total area of land that is verified to be within either the ecosystem and land use development phase or the rehabilitation completion phase (definitions E & F in Table 5) that have been returned to an agricultural final land use.
M	Established rehabilitation for native ecosystem final land uses (hectares)	The percentage of total area of land that is verified to be within either the ecosystem and land use development phase or rehabilitation completion phase (definitions E & F in Table 5) that have been returned to native ecosystem final land use.
N	Established rehabilitation for other/non-vegetated final land uses (hectares)	The percentage of total area of land that is verified to be within either the ecosystem and land use development phase or the rehabilitation completion phase (definitions E & F in Table 5) that have been returned to other/non-vegetated final land use.

Attachment 2 - Definitions

WORD	DEFINITION
Active	In the context of rehabilitation, land associated with mining domains is considered 'active' for the period following disturbance until the commencement of rehabilitation.
Active mining phase of rehabilitation	In the context of rehabilitation, the active mining phase of rehabilitation constitutes the rehabilitation activities undertaken during mining operations such as salvaging and managing soil resources, salvaging habitat resources, and native seed collection. This phase also includes management actions taken during operations to manage risks to rehabilitation and enhance rehabilitation outcomes such as selective handling of waste rock and management of tailings emplacements.
Analogue site	In the context of rehabilitation, an analogue site is a 'reference site' that represents an example of the defining characteristics (such as vegetation composition and structure or agricultural productivity) of the final land use. Characteristics of analogue sites can be assessed to develop the rehabilitation objectives and completion criteria for final land use domains.
Annual rehabilitation report and forward program	As described in the Mining Regulation 2016.
Annual reporting period	As defined in the Mining Regulation 2016.
Closure	A whole-of-mine-life process, which typically culminates in the relinquishment of the mining lease. It includes decommissioning and rehabilitation to achieve the approved final land use(s).

WORD	DEFINITION
Decommissioning	The process of removing mining infrastructure and removing contaminants and hazardous materials.
Decommissioning Phase of Rehabilitation	Activities associated with the removal of mining infrastructure and removal and/or remediation of contaminants and hazardous materials. In the context of the rehabilitation management plan this phase of rehabilitation may also include studies and assessments associated with decommissioning and demolition of infrastructure or works carried out to make safe or 'fit for purpose' built infrastructure to be retained for future use(s) following lease relinquishment.
Department	Department of Primary Industries and Regional Development.
Disturbance	See Surface Disturbance.
Disturbance area	<p>An area that has been disturbed and that requires rehabilitation.</p> <p>This may include areas such as on-licence exploration areas, stripped areas ahead of mining, infrastructure areas, water management infrastructure, sewage treatment facilities, topsoil stockpile areas, access tracks and haul roads, active mining areas, waste emplacements (active/unshaped/in or out-of-pit), tailings dams (active/unshaped/uncapped), and areas requiring rehabilitation that are temporarily stabilised (i.e. managed to minimise dust generation and/or erosion).</p>
Domain	An area (or areas) of the land that has been disturbed by mining and has a specific operational use (mining domain) or specific final land use (final land use domain). Land within a domain typically has similar geochemical and/or geophysical characteristics and therefore requires specific rehabilitation

WORD	DEFINITION
	activities to achieve the associated final land use.
Ecosystem and Land Use Development	<p>This phase of rehabilitation consists of the activities to manage maturing rehabilitation areas on a trajectory to achieving the approved rehabilitation objectives and completion criteria.</p> <p>For vegetated land uses this phase may include processes to develop characteristics of functional self-sustaining ecosystems, such as nutrient recycling, vegetation flowering and reproduction, and increasing habitat complexity, and development of a productive, self-sustaining soil profile.</p> <p>This phase of rehabilitation may include specific vegetation management strategies and maintenance such as tree thinning, supplementary plantings and weed management.</p>
Ecosystem and Land Use Establishment	<p>This phase of rehabilitation consists of the processes to establish the approved final land use following construction of the final landform.</p> <p>For vegetated land uses this rehabilitation phase includes establishing the desired vegetation community and implementing land management activities such as weed control. This phase of rehabilitation may also include habitat augmentation such as installation of nest boxes.</p>
Exploration	Has the same meaning as that term under the State Environmental Planning Policy (Mining, Petroleum Production and Extractive Industries) 2007.
Final landform and rehabilitation plan	As defined in the Mining Regulation 2016.

WORD	DEFINITION
Final land use	As defined in the Mining Regulation 2016.
Form and way	Means the form and way approved by the Secretary. Approved form and way documents are available on the department's website.
Growth Medium Development	<p>This phase of rehabilitation consists of activities required to establish the physical, chemical and biological components of the substrate required to establish the desired vegetation community (including short lived pioneer species).</p> <p>This phase may include spreading the prepared landform with topsoil and/or subsoil and/or soil substitutes, applying soil ameliorants to enhance the physical, chemical and biological characteristics of the growth media, and actions to minimise loss of growth media due to erosion.</p>
Habitat	Has the same meaning as that term under the Biodiversity Conservation Act 2016 and the Fisheries Management Act 1994 (as relevant).
Indicator	An attribute of the biophysical environment (e.g. pH, topsoil depth, biomass) that can be used to approximate the progression of a biophysical process. It can be measured and audited to demonstrate (and track) the progress of an aspect of rehabilitation towards a desired completion criterion (i.e. defined end point). It may be aligned to an established protocol and used to evaluate changes in a system.
Land	As defined in the Mining Act 1992.

WORD	DEFINITION
Landform Establishment	<p>This phase of rehabilitation consists of the processes and activities required to construct the final landform.</p> <p>In addition to profiling the surface of rehabilitation areas to the approved final landform profile this phase may include works to construct surface water drainage features, encapsulate problematic materials such as tailings, and prepare a substrate with the desired physical and chemical characteristics (e.g. rock raking or ameliorating sodic materials).</p>
Large mine	As defined in the Mining Regulation 2016.
Lease holder	The holder of a mining lease.
Life of mine	The timeframe of how long a mine is approved to mine, from commencement to closure.
Mine rehabilitation portal	<p>Means the Resources Regulator's online portal that lease holders must use (via a registered account) to:</p> <ul style="list-style-type: none">▪ upload rehabilitation geographical information system (GIS) spatial data▪ develop rehabilitation GIS spatial data (using online tracing functions)▪ generate rehabilitation plans and rehabilitation statistics using the map viewer and Rehabilitation Key Performance Indicator functionalities. <p>Data submitted to the mine rehabilitation portal is collated in a centralised geodatabase for use by</p>

WORD	DEFINITION
	the Resources Regulator to regulate rehabilitation performance of lease holders.
Mining area	As defined in the Mining Act 1992.
Mining domain	A land management unit with a discrete operational function (e.g. overburden emplacement), and therefore similar geophysical characteristics, that will require specific rehabilitation treatments to achieve the final land use(s).
Mining land	As defined in the Mining Act 1992.
Native vegetation	Has the same meaning as that term under section 60B of the Local Land Services Act 2013.
Overburden	Material overlying coal or a mineral deposit.
Performance indicator	An attribute of the biophysical environment (for example pH, slope, topsoil depth, biomass) that can be used to demonstrate achievement of a rehabilitation objective. It can be measured and audited to demonstrate (and track) the progress of an aspect of rehabilitation towards a desired completion criterion, that is, a defined end point. It may be aligned to an established protocol and used to evaluate changes in a system.
Phases of rehabilitation	The stages and sequences of actions required to rehabilitate disturbed land to achieve the final land use. The phases of rehabilitation are:

WORD	DEFINITION
	<ul style="list-style-type: none">▪ active mining▪ decommissioning▪ landform Establishment▪ growth medium development▪ landform Establishment▪ ecosystem and land use establishment▪ ecosystem and land use development
Progressive rehabilitation	The progress of rehabilitation towards achieving the approved rehabilitation completion criteria. This may be described in terms of domains, phases, performance indicators and rehabilitation completion criteria.
Rehabilitation Completion	The final phase of rehabilitation when a rehabilitation area has achieved the approved rehabilitation objectives and rehabilitation completion criteria for the final land use. Rehabilitation areas may be classified as complete when the Resources Regulator has determined in writing that the relevant rehabilitation obligations have been fulfilled following submission of <i>Form ESF2 Rehabilitation completion and/or review of rehabilitation cost estimate application</i> by the lease holder.
Rehabilitation Completion criteria	As defined in the Mining Regulation 2016.
Rehabilitation cost estimate	As defined in the Mining Regulation 2016.

WORD	DEFINITION
Rehabilitation management plan	As defined in the Mining Regulation 2016.
Rehabilitation objectives	As defined in the Mining Regulation 2016.
Rehabilitation risk assessment	As defined in the Mining Regulation 2016.
Rehabilitation schedule	The defined timeframes for progressive rehabilitation set out in the forward program.
Relevant stakeholders	<p>Means any persons or bodies who may be affected by the mining operations, including rehabilitation, carried out on the lease land, and includes:</p> <ul style="list-style-type: none">▪ the relevant development consent authority▪ the local council▪ the relevant landholder(s)▪ community consultative committee (if required under the development consent) or equivalent consultative group▪ affected land holder(s)▪ government agencies relevant to the final land use▪ affected infrastructure authorities (electricity, telecommunications, water, pipeline, road, rail authorities)▪ local Aboriginal communities, and▪ any other person or body determined by the Minister to be a relevant stakeholder in relation to

WORD	DEFINITION
	a mining lease.
Risk	The effect of uncertainty on objectives. It is measured in terms of consequences and likelihood (AS/NZS ISO 31000:2009).
Secretary	The Secretary of the department.
Security deposit	An amount that a mining lease holder is required to provide and maintain under a mining lease condition, to secure funding for the fulfilment of obligations under the lease (including obligations that may arise in the future).
Surface disturbance	Includes activities that disturb the surface of the mining area, including mining operations, ancillary mining activities and exploration.
Tailings	A combination of the fine-grained solid material remaining after the recoverable metals and minerals have been extracted from the mined ore, and any process water ² .
Waste	Has the same meaning as that term under the <i>Protection of the Environment Operations Act 1997</i> .

²Commonwealth of Australia (DITR), 2007. Tailings Management.

Attachment 3 - Rehabilitation Complaints

DATE	COMPLAINANT	COMPLAINT DETAILS	RESPONSE DETAILS	STATUS OF RESPONSE	DATE RESPONSE COMPLETED (IF APPLICABLE)
------	-------------	-------------------	------------------	--------------------	-----------------------------------------

Attachment 4 - Stakeholder consultation

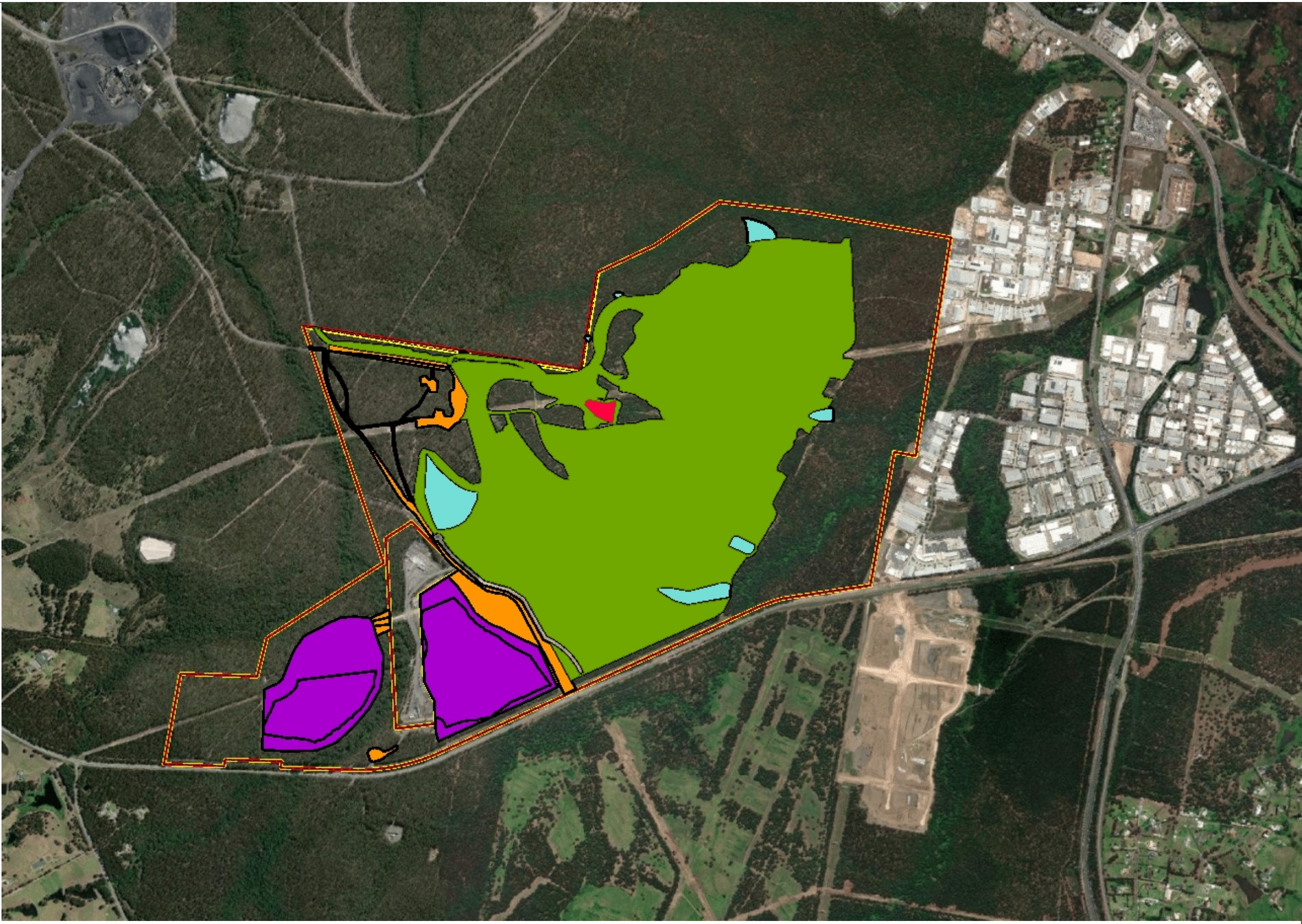
DATE	STAKEHOLDER	CONSULTATION ACTIVITIES AND FORMS	MATTERS SUBJECT TO CONSULTATION	ACTIONS TAKEN
2 Sep 2025	NSW Resources Regulator	Revegetation TAP	Rehabilitation and revegetation of Donaldson mine.	Donaldson Coal Mine is preparing a Action Plan to address recommendations made by the Resources Regulator.

Attachment 5 - Plans

Plan 1A attachment not provided.

Plan 1B attachment not provided.

Donaldson Open Cut Coal Mine Plan 1A – Status of mining and rehabilitation at completion of annual reporting period



- Legend**
- Rehabilitation**
- Decommissioning
 - Landform Establishment
 - Growth Media Development
 - Ecosystem and Land Use Establishment
 - Ecosystem and Land Use Development
 - Relinquishment (Rehabilitated)
 - Rehabilitation Completion
- Disturbance**
- Beneficiation Facility
 - Infrastructure Area
 - Other
 - Overburden Emplacement Area
 - Tailings Storage Facility
 - Underground Mining Area (SMP)
 - Active Mining Area (Open cut void)
 - Water Management Area
- Project Approval Boundary**
- Mine Operations Area**
- World Imagery**
- Low Resolution 15m Imagery
 - High Resolution 60cm Imagery
 - High Resolution 30cm Imagery
 - Citations

Donaldson Open Cut Coal Mine Plan 1B Current landform contours



- Legend
- Current Landform Contours
 - Project Approval Boundary
 - Mine Operations Area
 - World Imagery
 - Low Resolution 15m Imagery
 - High Resolution 60cm Imagery
 - High Resolution 30cm Imagery
 - Citations



1,086.3 0 543.15 1,086.3 Meters

WGS_1984_Web_Mercator_Auxiliary_Sphere
© DRE

This map is a user generated static output from an Internet mapping site and is for reference only. Data layers that appear on this map may or may not be accurate, current, or otherwise reliable.
THIS MAP IS NOT TO BE USED FOR NAVIGATION

Notes
30/1/26
Submission ID numbers 11345