

**RIX'S CREEK COMMUNITY CONSULTATIVE
COMMITTEE MEETING**

MEETING 10/5/2016

PRESENT: Councillor - Val Scott. Community Representatives – Reg Eveleigh, Patricia Bestic and Michelle Higgins.

Company Representatives – Garry Bailey, Luke Murray, John Hindmarsh (Minutes), Chris Quinn.

APOLOGIES:

Meeting commenced 10.15 am. No site inspection was undertaken.

1 AGENDA

Councillor Val Scott chaired the meeting.

2 PECUNIARY INTERESTS

None reported.

3 PREVIOUS MINUTES

Minutes of meeting 8/9/2015 Accepted. Moved Reg Eveleigh Seconded Val Scott.

4 BUSINESS ARISING.

Nil.

Garry went through the purchase of Integra Open cut finalised on 18/12/2015. MOP approval to return to production at reduced rate of 2.5mt ROM below approved production level. Environmental Management Plans submitted to DP&E for approval to return to production. These have been approved. Recruitment continuing and operations have commenced running the one large excavator Cat 6060.

5 PRESENTATION OF ENVIRONMENTAL MONITORING REPORT.

SUMMARY

- Presentation of Annual Review Report for the period January to end December 2015 for Rix's Creek (RC).

ACTIVITY

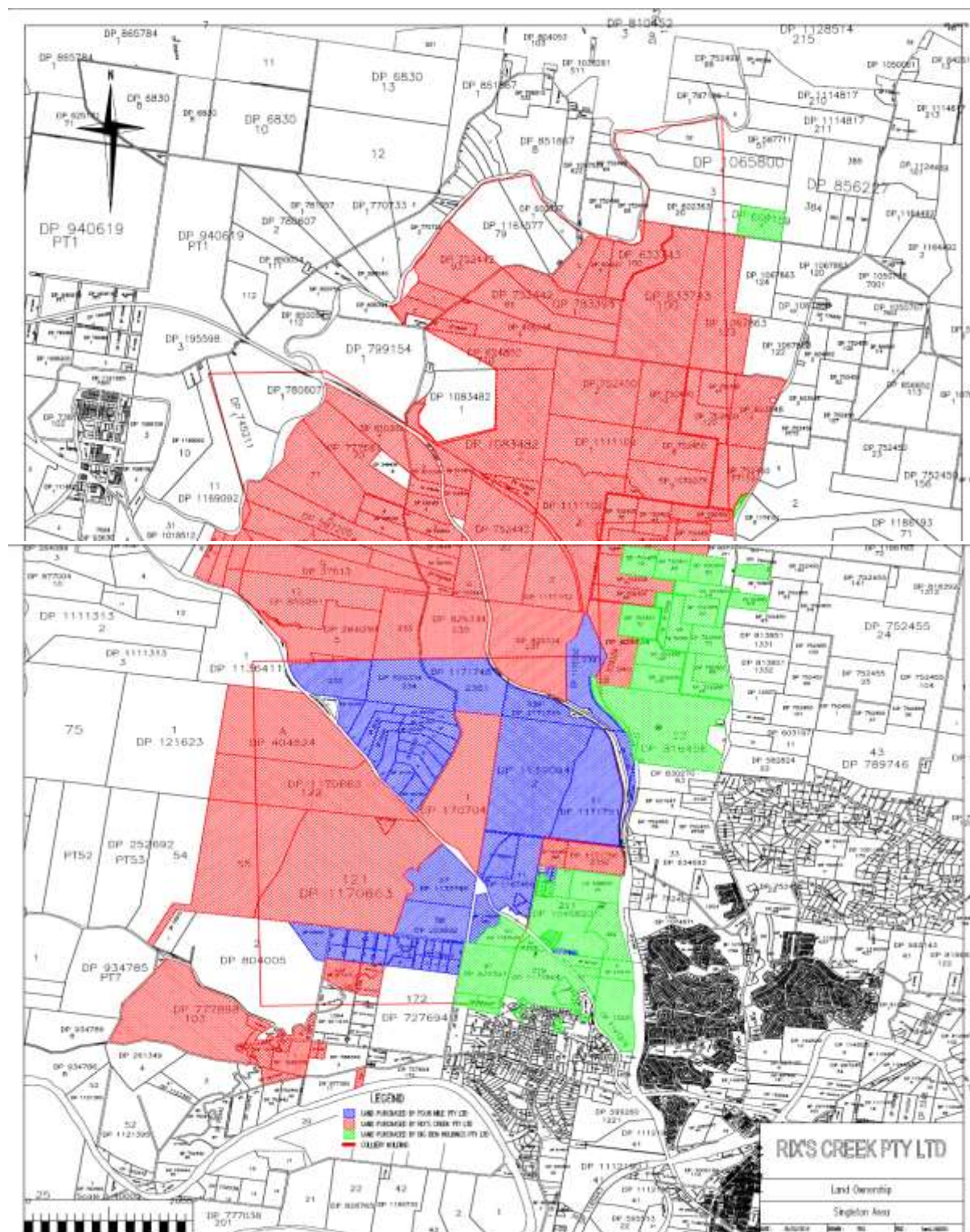
- Operations continuing in Pit 3 (West Pit) which is focus of operation and dumping in Pit 1 (North Pit). Liebherr R9800, Hitachi EX5500 excavator two main digging units with Hitachi 3600 excavator used on an "as needs" basis.



- Development consent Modification 7 submitted and approved to run ROM coal from Integra open cut now called Rix's Creek North (RCN) to Rix's Creek washing plant. Previously had approval to run ROM coal from the underground to Rix's Creek. Also modification allows for Rix's Creek ROM coal to be run to RCN for processing.
- Environmental Protection Licence (EPL) for Rix's Creek varied to include RCN. EPL 3391 now covers both operational areas.
- "Rix's Creek Continuation Project" – EIS went on display during November 2015. Received 140 submission in total including 8 from Government agencies, 1 from Singleton Council, 16 from special interest groups or organisations, and 115 from individual community members. Of the 115 community submissions received, more than two thirds (79) were in support of the Project, and less than one third (36) raised objections to the Project.
- Nil exploration during the period.
- Disturbance – pre-stripping for the year 33.3 ha. During 2016 programmed to disturb 10.6 ha ahead of the West Pit.
- Mining operations for 2015 similar to 2014 and 2016 production targets the same.
- Production for 1st January 2015 to the 31st December 2015 was:-

Overburden removed	13.364 million BCM
Run-of-mine coal	2.847 million t
Clean coal	1.4342 million t
- Land ownership with the purchase of RCN has significantly increased and a Property Manager Stephen Brown has been appointed to manage the Companies asserts.

RIX'S CREEK MINE COMMUNITY CONSULTATIVE COMMITTEE MEETING MINUTES – 10/05/2016



Company land ownership

- Actions from previous annual review have been included into this report.

Actions required at review by DPE:

No	Issue/Observation	Action	Responsibility	Due	Action
1	Please include a site water balance for the period which is covered by the AEMR.	Water balance in 2015 AEMR is expected to contain the site water balance for the period 1/1/2015 until 31/12/2015.	John Hindmarsh / Jason Desmond	2015 AEMR	Page 80
2	Noise monitoring	To ensure compliance with consent	John	2015	Page 51

RIX'S CREEK MINE COMMUNITY CONSULTATIVE COMMITTEE MEETING MINUTES – 10/05/2016

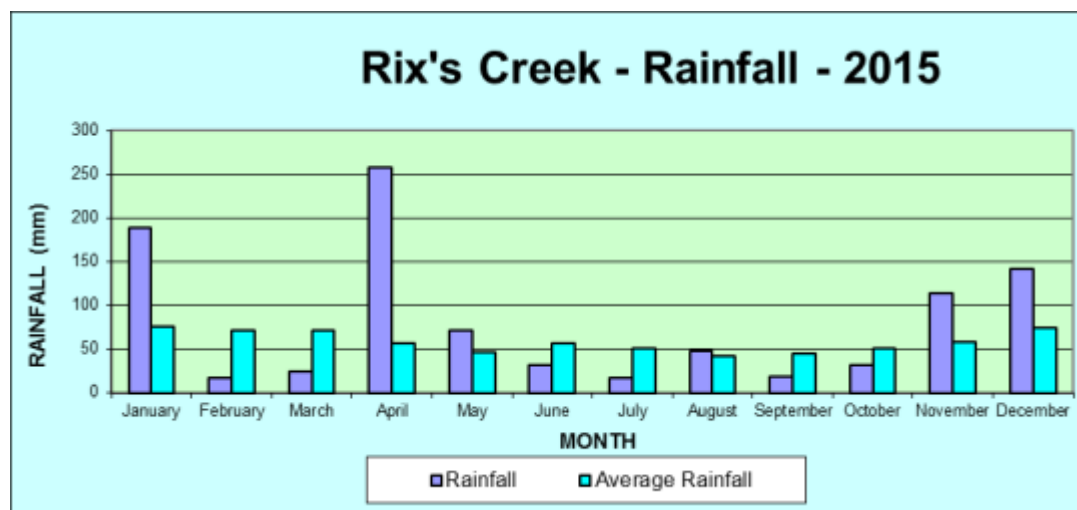
	results.	DA49/94, please also include attended noise monitoring results in La(10).	Hindmarsh Jason Desmond	/ AEMR	
3	Groundwater level information.	Please provide additional groundwater level information including graphs of monitoring results and a discussion on trigger levels.	John Hindmarsh Jason Desmond	/ 2015 AEMR	Page 90-97
4	Energy Use and greenhouse gas emissions associated with the development.	In alignment with Condition 14 of DA 49/94 please provide written comment within future AEMR's as to how the company is implementing feasible and reasonable measures to minimise energy use and greenhouse gas emissions associated with the development.	John Hindmarsh Jason Desmond	/ 2015 AEMR	Not in Annual Review Guidelines. NGERS report submitted 6/10/2015
5	Rehabilitation Management.	Condition 16B(v) in DA 49/94 requires a "Detailed description of what measures would be implemented over the next 3 years" – the current Rehabilitation Management Plan is dated 9/11/2011 and is therefore out of date and requires review.	John Hindmarsh Jason Desmond	/ 2015 AEMR	Page 133
6	Greenhouse gas emissions.	A discussion in regard to the reduction of greenhouse gas emissions (Condition 14A) should be included in the AEMR.	John Hindmarsh Jason Desmond	/ 2015 AEMR	Not in Annual Review Guidelines. NGERS report submitted 6/10/15
7	Blast Fume Management Strategy.	In relation to the blast fume complaint on 16/4/2014 in Table 23 of the AEMR, can you please in future AEMR's provide the level of fume classification as per the Blast Fume Management Strategy.	John Hindmarsh Jason Desmond	/ 2015 AEMR	Page 55
8	April 2015 storm event.	Action from the inspection of the sediment dams (out-of-pit dump) conducted by DPE on 23 rd April 2015 please provide a report and proposed action plan to DPE by 15 th July 2015.	John Hindmarsh Jason Desmond	/ 2015 AEMR	Submitted 16 th July 2015 to DPE. Also Appendix 4.
9	Water balance for this AEMR period not provided.	Provide appropriate water balance in the 2015 AEMR.	John Hindmarsh Jason Desmond	/ 2015 AEMR	Page 80
10	Glycerine trials for dust suppression are to be resumed.	Provide up-date and results on glycerine trials.	John Hindmarsh Jason Desmond	/ 2015 AEMR	Page 67-68
11	Variation between 2014 MOP year and actual year with respect to total area disturbed and rehabilitated.	Justify variations in AEMR.	John Hindmarsh Jason Desmond	/ 2015 AEMR	Page 115
12	Localised sinkhole observed NE of highway / bridge.	Back fill the sinkhole.	John Hindmarsh Jason Desmond	/ 31 August 2015	Page 76
13	Clean water diversion flooded	Implement measures to prevent overflow during any future storm event.	John Hindmarsh	/ 2015 AEMR	Page 90

RIX'S CREEK MINE COMMUNITY CONSULTATIVE COMMITTEE MEETING MINUTES – 10/05/2016

	after the April 2015 storm.		Jason Desmond		
--	-----------------------------	--	---------------	--	--

WEATHER

- Rainfall for 2015 was 962 mm which was 264 mm above average for the year.



Annual Rainfall 2015.

NOISE MONITORING

- Monitoring undertaken by independent noise consultant on a monthly basis in line with current regulatory requirements. This is more extensive than the old 1995 development consent requirements and involves attended monitoring of mine noise.
- No exceedances of the criteria were recorded.
- Sixteen (16) complaints and two (2) enquiries have been received in relation to operational noise over the reporting period. Over this period seven (7) complaints were from the one complainant in Maison Dieu over various dates, two (2) were from another complainant within Maison Dieu, whilst another two (2) were from another complainant situated at Long Point over various dates. The other complainants were individual residents located within Camberwell and Maison Dieu areas over various dates.

DATE	LOCATION	DESCRIPTION
14/1/2015	Maison Dieu	Noise from Rix's Creek operation disturbing sleep. Noise monitoring levels within noise management guidelines .
4/3/2015	Maison Dieu	Noise from Rix's Creek Operation clearly heard at night. Continuous low frequency noise. Noise monitoring levels within noise management guidelines.
16/3/2015	Camberwell	Noise from Rix's Creek Operation clearly heard in the morning. Continuous low frequency noise. Noise monitoring levels within noise management guidelines.
25/3/2015	Maison Dieu	Noise from Rix's Creek Operation clearly heard at night and had for last several nights. Noise monitoring levels within noise management guidelines
29/3/2015	Camberwell	Noise complaint on a Sunday morning when mine not operating.
8/6/2015	Maison Dieu	Noise coming from Rix's Creek operation. OCE modified operation and noise monitoring levels within noise management guidelines.
15/6/2015	Camberwell	Noise coming from Rix's Creek operation. Noise monitoring levels within noise management guidelines.

RIX'S CREEK MINE COMMUNITY CONSULTATIVE COMMITTEE MEETING MINUTES – 10/05/2016

3/7/2015*	Maison Dieu	Inquiry into West Pit noise from operation as well as offsite noise monitoring near house.
22/7/2015	Wattle Ponds	Noise from Rix's Creek ROM Pad disturbing resident. Ceased loading SBC from area.
1/8/2015	Maison Dieu	Noise from West Pit operation disturbing sleep. OCE amended operation even though noise monitoring levels within noise management guidelines
1/8/2015	Maison Dieu	Complaint regarding West Pit operation disturbing sleep. OCE amended operation lower in pit and complainant provided with OCE's direct phone number. Noise monitoring levels within noise management guidelines
1/8/2015	Maison Dieu	Complaint regarding West Pit operation disturbing sleep. OCE amended operation lower in pit and complainant provided with OCE's direct phone number. Noise monitoring levels within noise management guidelines
5/11/2015	Maison Dieu	Noise from operation disturbing sleep. Noise monitoring conducted at residence and operation modified prior to rain.
21/11/2015*	Maison Dieu	Inquiry into noise from West Pit operation.
24/11/2015	Maison Dieu	Noise from operation disturbing sleep. Noise monitoring conducted at residence and operation modified. Noise monitoring levels maintained within noise management guidelines.
25/11/2015	Long Point	Noise from operation disturbing sleep. Noise monitoring conducted at residence and operation modified. Noise monitoring levels maintained within noise management guidelines.
10/12/2015	Maison Dieu	Noise from operation disturbing sleep. Noise monitoring conducted at residence and New England Highway dominant noise source.
17/12/2015	Long Point	Noise from operation disturbing sleep. Noise monitoring conducted at residence and levels within noise management guidelines

BLASTING

- 118 production blasts. All Pit 3 (West Pit).
- 53 blasts were rescheduled due to unfavourable weather conditions
- One blasts (0.8%) recorded overpressure > 115 dBLinear but < 120 dBLinear
- No blast exceeded 5 mm/sec vibration.

Complaints.

Four complaints were received in relation to 4 blasts.

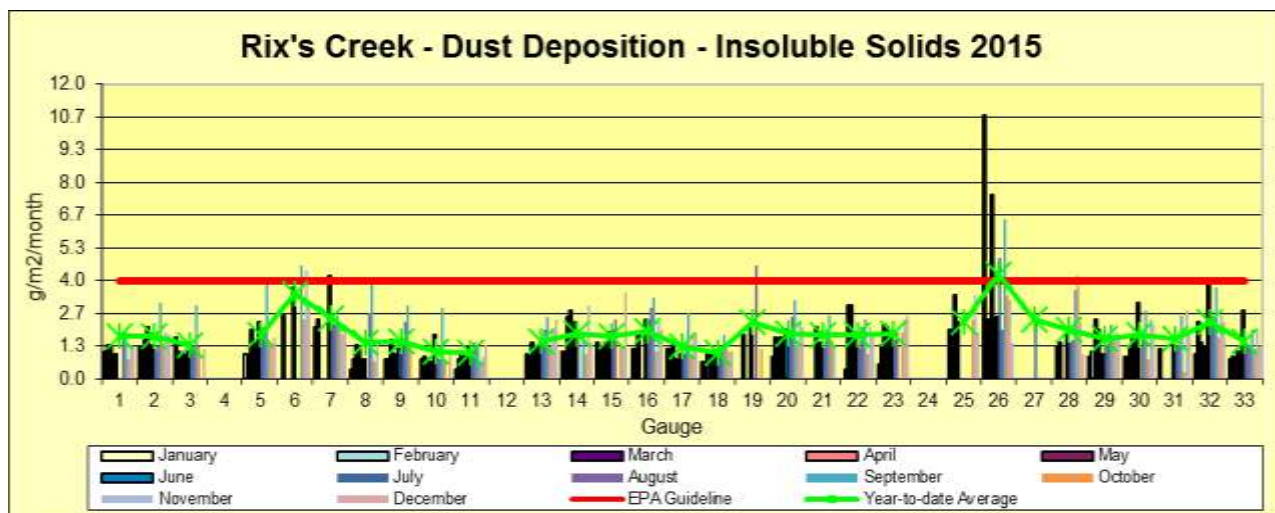
DATE	LOCATION	RESOLUTION
23/6/2015	Singleton	Complaint from DPE (Singleton Compliance) regarding overpressure from blast. Rix's Creek provided blast results to DPE (Singleton Compliance) and blast overpressure was not exceeded at any Rix's Creek monitoring site.
24/6/2015	Singleton	Complaint from DPE (Singleton Compliance) regarding overpressure from blast. Rix's Creek provided blast results to DPE (Singleton Compliance) and blast overpressure was not exceeded at any Rix's Creek monitoring site.
8/7/2015	Singleton Heights	Complaint from Singleton Heights resident regarding overpressure from blast. Rix's Creek provided blast results to resident and blast overpressure was not exceeded at any Rix's Creek site.
10/7/2015	Singleton	Complaint from DPE (Singleton Compliance) regarding overpressure from blast. Rix's Creek provided blast results to DPE (Singleton Compliance) and blast overpressure was not exceeded at any Rix's Creek monitoring site. Rix's Creek agreed to installing

a new blast meter near Singleton Council for future monitoring.

AIR QUALITY

Insoluble solids deposition results.

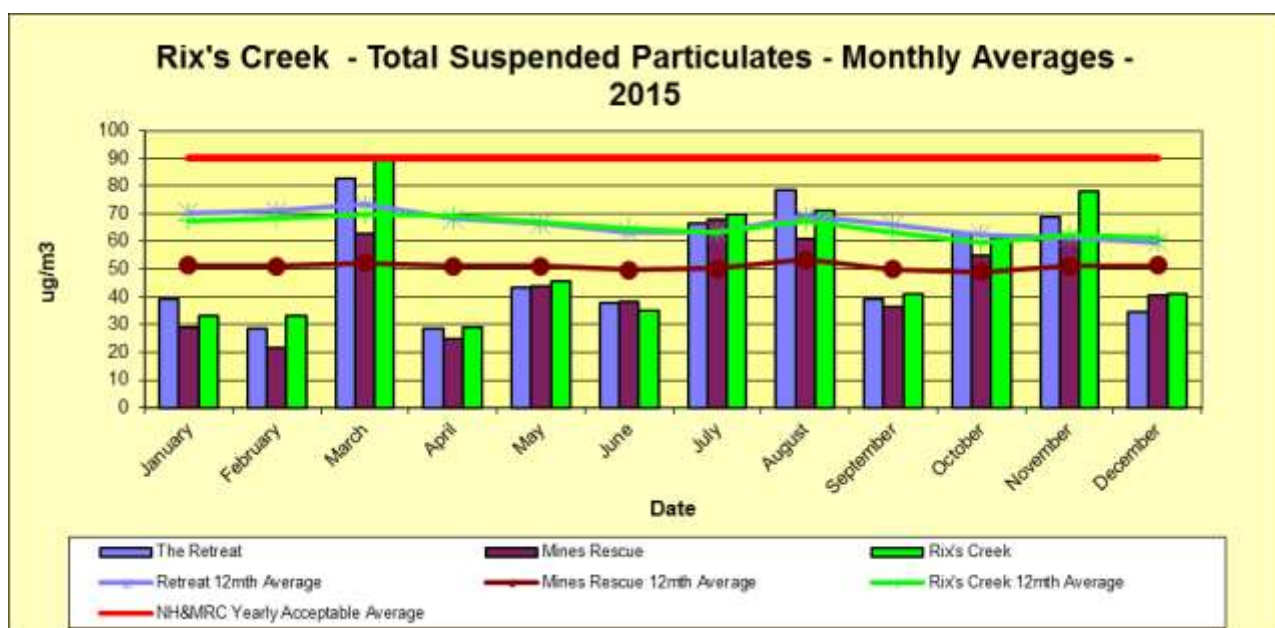
- The year to date average of all of the gauges from January to December was 1.9 g/m²/month, same as 2014. Gauge 26 located next to the operation on site had an average 4.2 g/m²/month.



Dust Deposition (Insoluble Solids) 12 monthly rolling averages.

Total Suspended Particulates

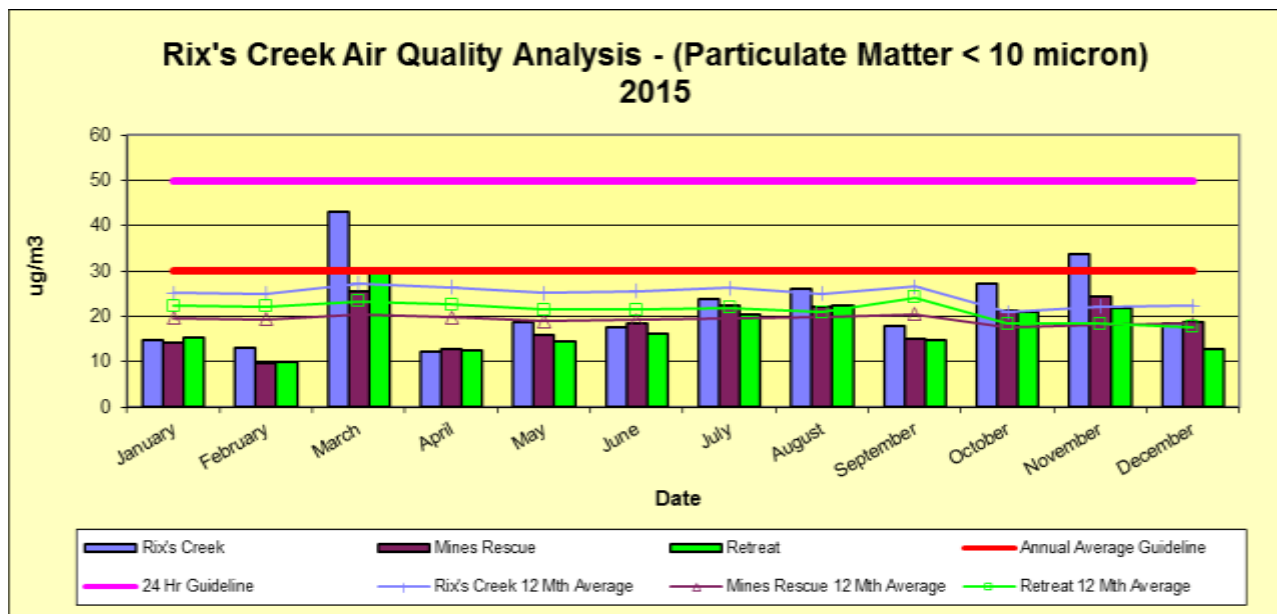
- All sites below annual limit: 90 ug/m³
- Decreased from last year at all three sites:- Rix's Creek, Mines Rescue Station and Retreat.
- 33 out of 183 results 18% > annual limit of 90 ug/m³ in 2015, yearly average 57.4 ug/m³
- 39 out of 183 results 21% > annual limit of 90 ug/m³ in 2014, yearly average 64.3 ug/m³



Total Suspended Particulates Monthly Averages & 12 Monthly Rolling Averages.

Particulate Matter less than 10 micron.

- All sites below annual limit of 30 ug/m³ on a twelve monthly rolling average.
- Decreased from last year at all 3 sites:- Rix's Creek, Retreat & Mines Rescue.
- Daily goal of 50 ug/m³ was exceeded at Rix's Creek site on 2 occasions.
- Rix's Creek 22 ug/m³ – last yearly average 27 ug/m³
- Mines Rescue Station 18 ug/m³ – last yearly average 20 ug/m³
- Retreat 18 ug/m³ – last yearly average 22 ug/m³



Particulate Matter < 10 Micron year to date

- No complaints were received in relation to air quality during the 2015 reporting period.
- Rix's Creek has implemented further improvements including adverse weather prediction and dust forecasting tool.

RIX'S CREEK MINE COMMUNITY CONSULTATIVE COMMITTEE MEETING MINUTES – 10/05/2016

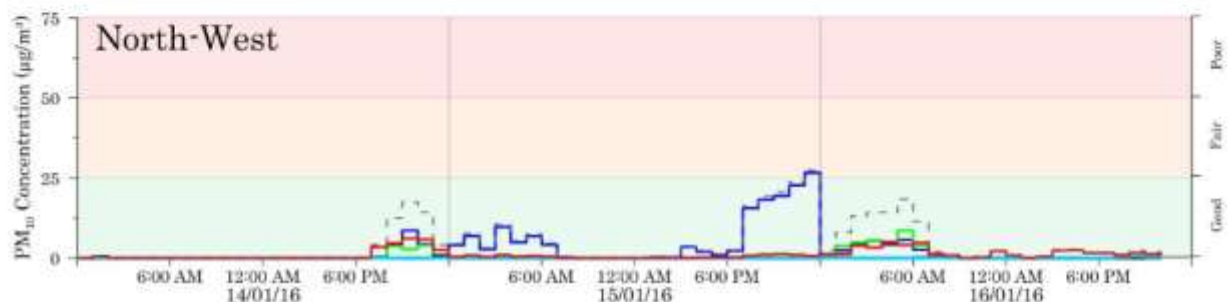
PM₁₀ Time Series Forecast For Thursday 14th Of January 2016

[Print this page](#)

14/01/2016																									
	12am	1am	2am	3am	4am	5am	6am	7am	8am	9am	10am	11am		12pm	1pm	2pm	3pm	4pm	5pm	6pm	7pm	8pm	9pm	10pm	11pm
Wind Speed (m/s)	3.0	4.3	5.7	7.0	5.2	4.5	4.5	5.5	5.8	6.3	6.5	6.6	Wind Speed (m/s)	6.2	6.6	7.0	8.7	6.1	1.0	4.7	8.5	5.7	5.8	6.2	4.8
Wind Direction	WSW	W	W	WNW	WNW	NW	NW	NW	NW	NW	NW	NW	Wind Direction	NW	NNW	WNW	WNW	N	WSW	S	S	S	S	S	SSE
Max 1-hour average PM ₁₀ concentration (µg/m ³)																									
South-East	43	16	3	2	3	3	3	3	3	3	3	3	South-East	3	2	3	0	0	1	0	0	0	0	0	0

15/01/2016												16/01/2016													
	12am	2am	4am	6am	8am	10am	12pm	2pm	4pm	6pm	8pm	10pm		12am	2am	4am	6am	8am	10am	12pm	2pm	4pm	6pm	8pm	
Wind Speed (m/s)	5.9	5.5	5.4	5.9	6.9	6.2	6.1	4.0	7.3	4.7	4.5	3.5	Wind Speed (m/s)	3.3	4.7	5.1	4.5	6.3	7.3	7.6	7.2	7.8	5.2	3.4	
Wind Direction	SSE	SSE	SSE	S	S	S	S	S	SSE	SSE	SSE	SSE	Wind Direction	SSE	S	S	SSE	SE	SE	SE	SE	ESE	SE	SE	
Max 2-hour average PM ₁₀ concentration (µg/m ³)																									
North-West	6	7	6	3	0	0	0	2	2	9	20	26	North-West	5	14	16	7	1	1	0	1	2	2	7	

Forecast Date: 14 Jan 2016 - 16 Jan 2016



WEEDS & PESTS

- Weed control across site – focus on
 - Galenia
 - Assorted Pear
 - Mother of Millions
 - Paterson's Curse
 - Blue Heliotrope
 - St Johns Wart
 - Green Cestrum
 - Pampus Grass
 - African Olive.
- Wild dog baiting during May 2015
- Kangaroo culling – 200 tags April 2015

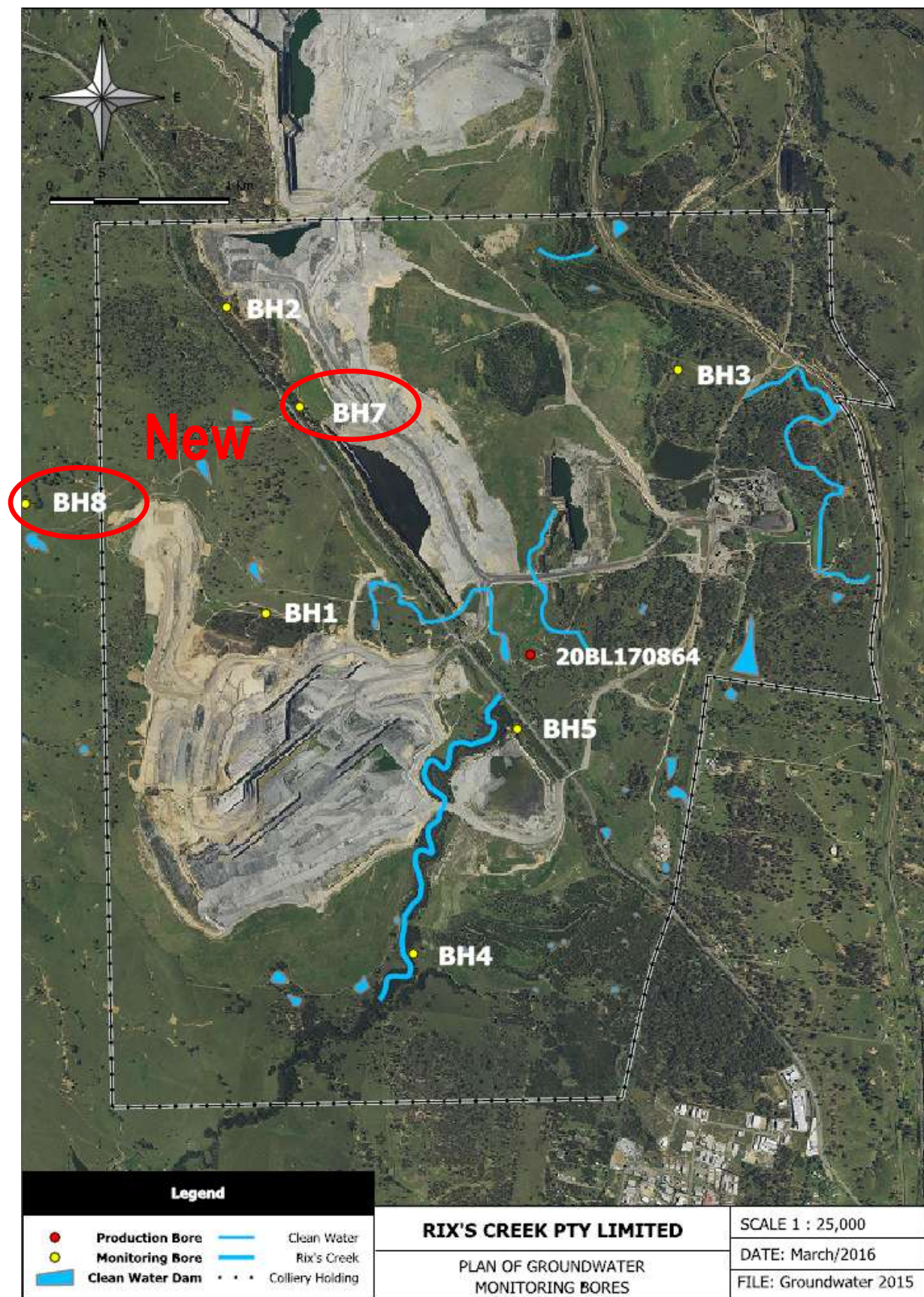
WATER QUALITY

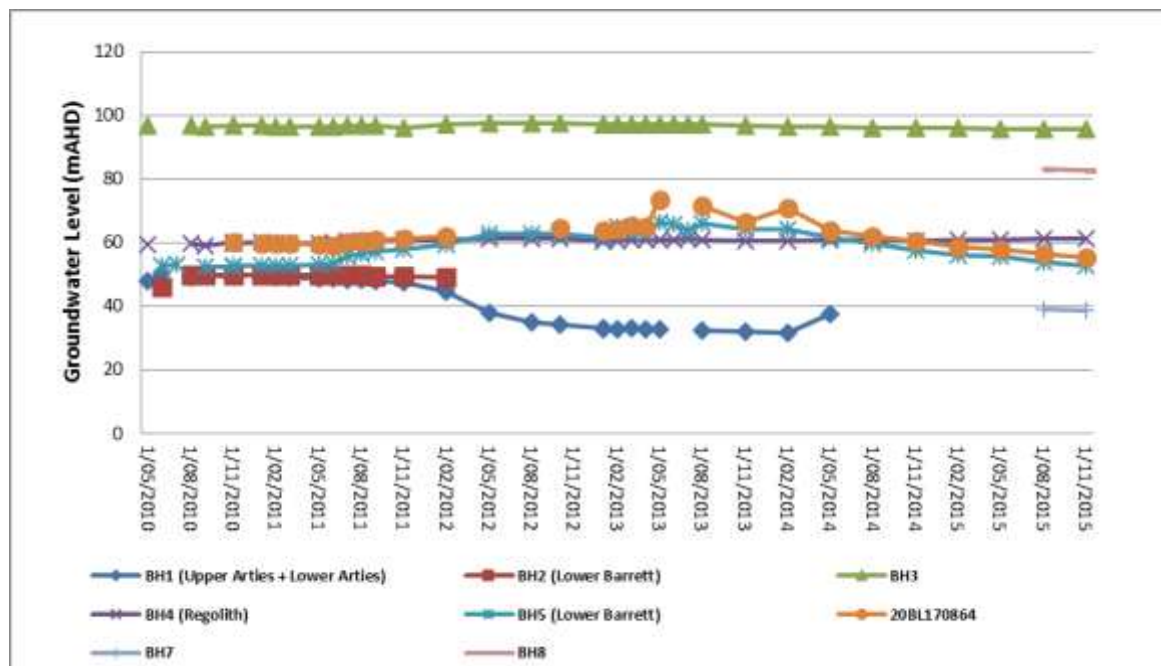
- Rix's Creek – Only flow January, April & August.
- No samples (dry sites) March, Sept./Oct. & Dec.
- pH - minimal change at all sites
- Salinity – increased with dry conditions
- Total Dissolved Solids - mirrors salinity
- Total Suspended Solids – similar to previous years results
- Site Water Balance for 2015

Water Stream	2015 (ML)
Inputs	
Imported Fresh Water	0
Imported Potable	10
Groundwater Seepage To Open Cuts	47
Underground Dewatering	0
Rainfall Runoff – Into Dirty Water System	2,747
Recycled to CHPP from Tails & Storage (not included in total)	(262)
Water from ROM Coal	189
Total Inputs	3,003
Outputs	
Groundwater Seepage Out	0
Dust Suppression – Water Carts	620
Exported to Other Mines – Dirty Water	0
Evaporation Fans & Sprays	0
Evaporation - Mine Water & Tailings Dams	449
Entrained in Process Waste	402
Water in Product Coal	123
Potable Usage	10
Total Outputs	1,604
Estimated Change in Pit Storage (increased)	1,389

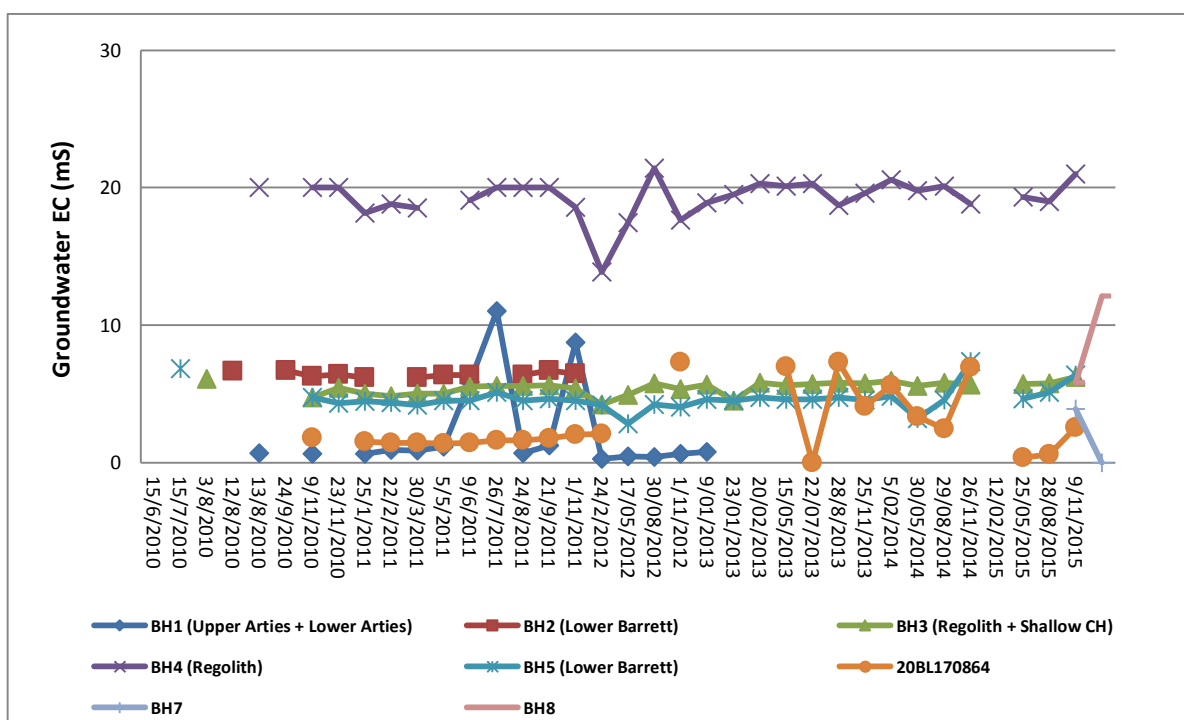
GROUNDWATER MONITORING

- Groundwater monitoring network consisting of five piezometer bores (installed May 2010) and one production bore
- Monitoring commenced May 2010 on a monthly basis – NOW approval of Water Management Plan 2011 – monitoring on a quarterly basis
- All the sites able to be monitored showed linear results similar to those dating back to 2010 (commencement of monitoring).
- Included in AEMR previous year's data (back to 2010) – request of DPE (at 2013 AEMR review)
- 2 new piezometers installed April 2015 – monitoring to commence from now on





Hydrographs of BH1 to BH5 from 2010-2015



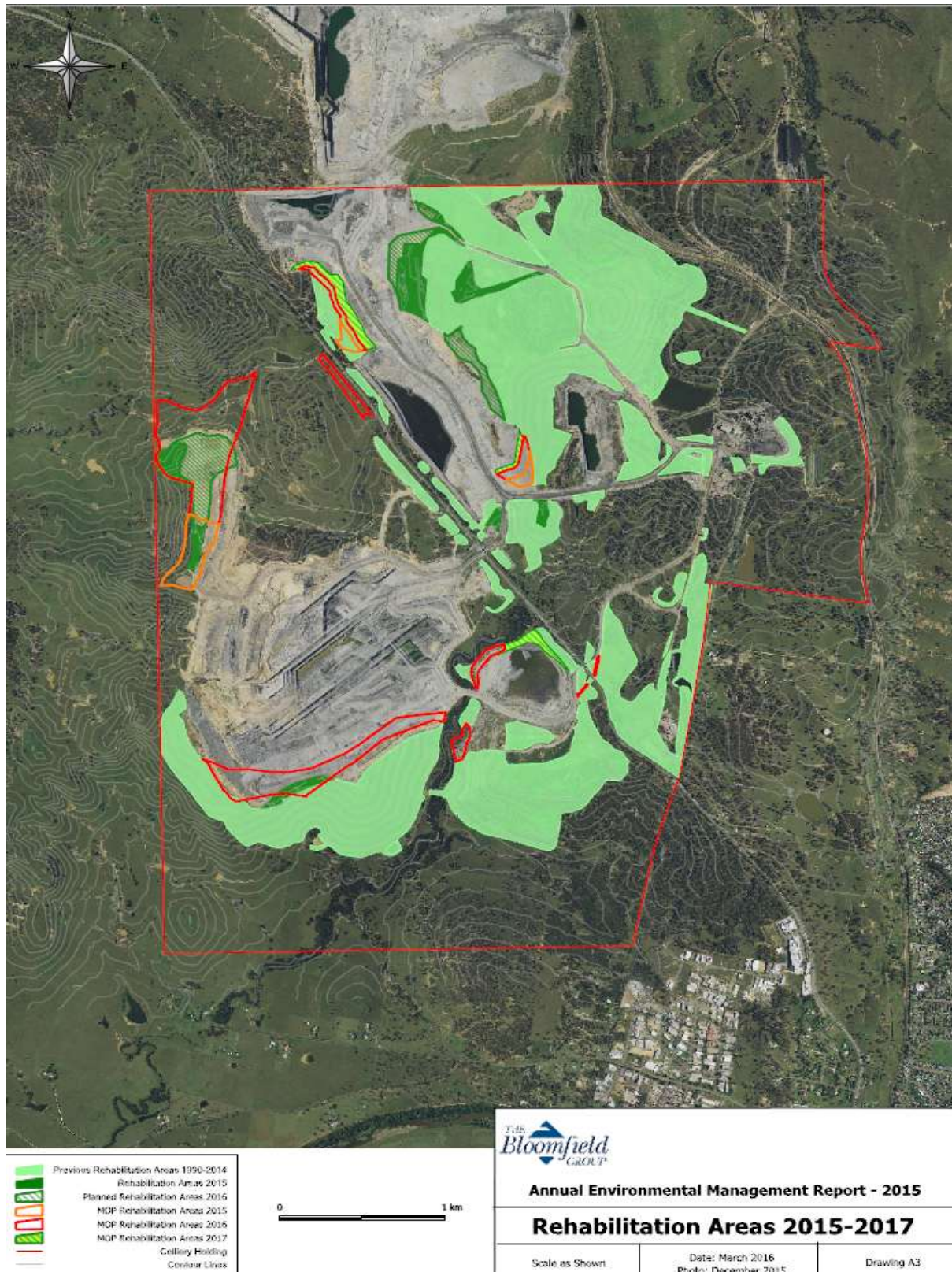
Groundwater Salinity of BH1 to BH5 from 2010-2015

EROSION & SEDIMENT

- During July all sediment dams were cleaned out.

REHABILITATION

- ~21.7 ha rehabilitated – mostly pasture and some tree area's (tree seeded ~2 ha)
- 28.5 ha last year – 2014
- ~20 ha planned for 2016
- Several areas completed Jan-Aug – topsoil spread and biosolids incorporated as previous years
- Larger areas were North Pit Dump. West out-of-pit dump.
- Other works: 4,900 Tubestock planted, areas prepared for tree planning 2016, ~5ha rock-rolled

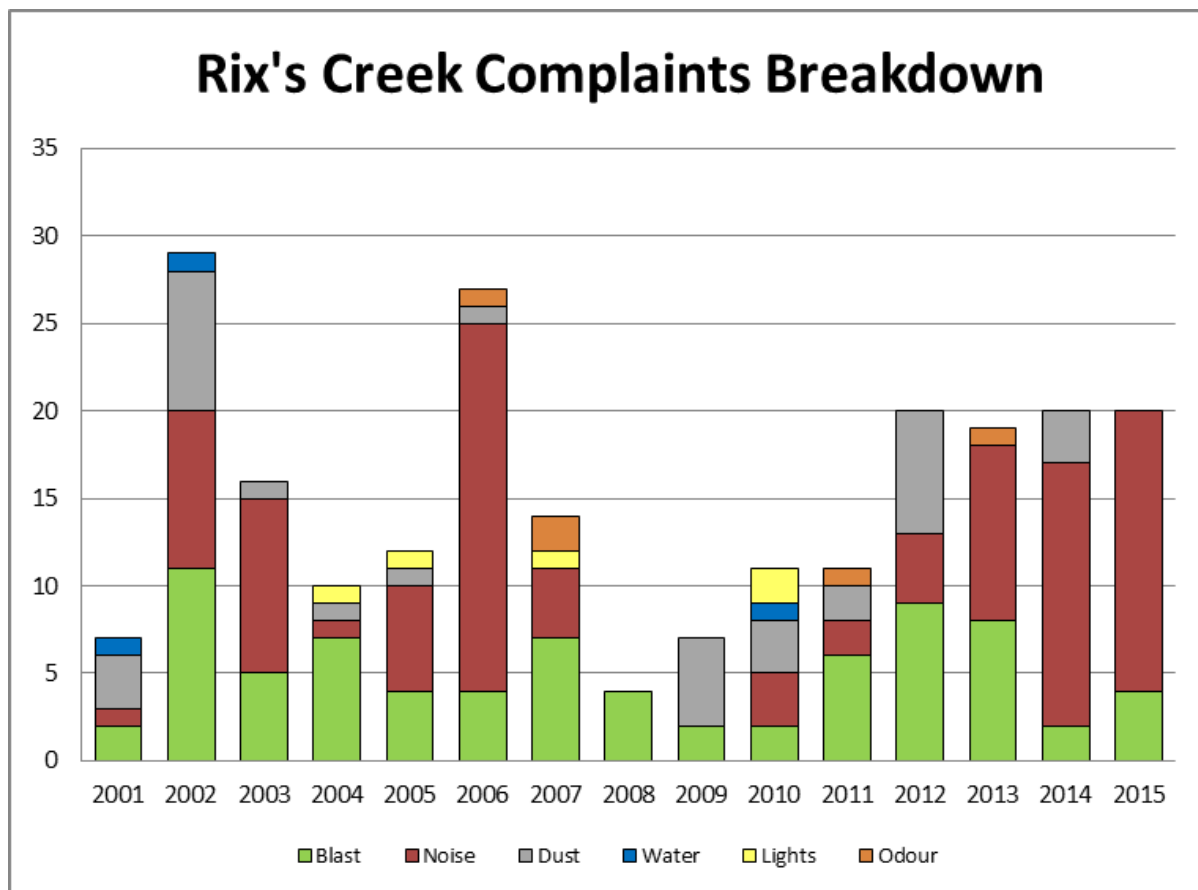


Annual Environmental Management Report - 2015

Rehabilitation Areas 2015-2017

COMMUNITY RELATIONS

- 20 complaints - similar last year (majority related to noise - 16)
- 3 -enquiries
- 4 - blast
- The Bloomfield Group apart of UHMD



Complaints History

INCIDENTS & NON-COMPLIANCE

- Release of water off-site during April storm event. Reported to EPA and report submitted.
- Independent Audit due 2016.

ACTIVITIES 2016

- Production similar 2015
- Rehabilitation of North Pit dump areas, nine-ways, West out-of-pit dump.
- Tubestock planting pit 2 dump
- Tree seeding areas. – North pit.
- Tree seed collection on site.
-

RIX'S CREEK CONTINUATION PROJECT - UPDATES

- EIS went on public display November 2015. Response to submission being prepared for submission.
- Singleton Council are preparing a draft voluntary planning agreement which has been agreed will be focused in the Alroy Oval area.

GENERAL BUSINESS

- The last Integra CCC meeting for the combined open cut and underground was held in February. At that meeting it was decided to disband the committee. The Company is proposing to this committee that the Rix's Creek CCC be expanded to include any member from the Integra CCC that has an interest in the open cut operations and wishes to join the Rix's Creek CCC if the Committee are agreeable.
- Integra CCC members who indicated they would like to join the Rix's Creek CCC were:-
- Lyn McBain, Deidre Olofsson, Greg Hall and David Moran.
- Rix's Creek CCC members agreed to the amalgamation of the members from the Integra CCC into the Rix's Creek CCC with the current Chairperson being a Singleton Councillor, at present Cr Val Scott.
-

NEXT MEETING/S:-

Tuesday September 20th 2016 @ 9 am. Site Inspection followed by presentation of environmental monitoring results from January to June 2015.

Meeting Closed 11:56 am.