

**FINAL MINUTES OF MEETING  
INTEGRA MINE COMPLEX COMMUNITY CONSULTATIVE COMMITTEE  
WEDNESDAY 17<sup>th</sup> February 2016**

**Present:**

John Turner	Independent Chairperson
Chris Knight	Department of Planning & Environment (DPE)
Marianne Bonney	Department Resources & Energy
Kate Walsh	Department Resources & Energy
Lyn McBain	Community Representative
Deidre Olofsson	Community Representative
Greg Hall	Community Representative
David Moran	Community Representative
Chris Quinn	Environmental Officer – Rix’s Creek
Garry Bailey	General Manager Mining Development – Bloomfield Group
Luke Murray	Mine Manager – Rix’s Creek
John Hindmarsh	Senior Environmental Officer – Rix’s Creek
Vicki McBride	Approval Manager – Glencore
Jason Thomas	Underground Manager - Glencore

**Apologies:**

Cr Tessa Capsanis (TC)	SSC Councillor
------------------------	----------------

**Agenda**

1. Welcome / Opening of the meeting by the Chairperson.
2. Apologies.
3. Declaration of any pecuniary interest.
4. Previous minutes – business arising.
5. Reports and overview of activities:
  - Overview of care and maintenance activities
  - Planning & reporting status (AR).
  - Presentation of environmental monitoring results
  - Questions or discussion of issues arising from the report and overview of activities from Committee Members.
6. Approvals update
7. Overview of Rix’s Creek North re-commencing operations
8. Proposed care and maintenance activities at Integra Underground Mine
9. General Business.
10. Discussion around dissolving Integra Coal Operations CCC and incorporation into Rix’s Creek Mine’s CCC and Glencore’s Mount Owen Complex CCC.

---

**Meeting open:** 10am

---

**Introductions:**

- Welcome and opening of meeting.
- 

**Declaration of pecuniary interest:**

- JT declared a commercial arrangement for fees and expenses relating to attendance and travel to and from ICO CCC meetings. Nil other comments
- 

Acceptance of previous minutes: Analysis of monitoring results.

Motioned – Deidre Olofsson, seconded – Lyn McBain

**Reports and Overview of Activities**

**Update and overview of site care and maintenance activities:**

- Explanation of purchase of Integra Complex by Glencore and the subsequent purchase of the Open cut by Bloomfield.
  - On the 18th December 2015 Glencore acquired 100% of Integra Coal Operations.
  - Bloomfield Group has subsequently purchased, from Glencore, the previous Integra Open Cut Operations, CHPP, Train loading infrastructure and Rail Loop.
  - Glencore retain ownership of the Integra Underground Mine.
  - Bloomfield Group will operate Open Cut Operations as “Rix’s Creek North”.
  - Glencore will continue to manage Integra Underground Mine in Care and Maintenance.
- Care & Maintenance activities throughout the year.
  - Northern Open Cut RL 105 rehabilitation has been completed with topsoil spread and native tree seed completed in November 2015. July-December rehabilitation undertaken on north 105 emplacement dump of 13 ha. Placed rehabilitation 3.5 ha ahead of MOP schedule
  - Water destruction activities and water pumping continued across site. Water pumping continued during the period with 10 fans operating 6:30 – 5 pm located in West pit.
  - Ensuring compliance with Project Approval and Environmental Protection Licence a priority in Care and Maintenance.
  - Preservation of CHPP and mining equipment ongoing in C&M period.
  - Mine is continued to maintain Statutory Compliance for:
    - Ventilation
    - Monitoring
  - Gas drainage and Flare plant idle.
  - EDL extracting Methane to produce power during C&M period.
- Planning and Reporting Status
  - 2015 Annual Review for Integra Coal Operations due 31 March 2016
  - Bioremediation improvements in C&M period.
    - Hydrocarbon Management Procedure updated in June 2015
    - Previous bioremediation site tested for Total Petroleum Hydrocarbons (TPH)
    - Bioremediation site constructed at RL100 South Pit in December 2015
  - UG gaswell remediation and first stage fan site rehabilitation completed December 2015
    - 3 sites to be remediated
    - 6 sites to be remediated as per MOP
  - Glennies Creek Riparian Management progressed with Enright Land Management conducting weed management of Area 5 and 6 in November 2015. Weeds targeted include Honey Locust, castor palm oil and green cestrum. Further work to be done in Area 4.

Question: Is there going to be any further work done upstream.

Monitoring results

- Air quality monitoring during C&M.

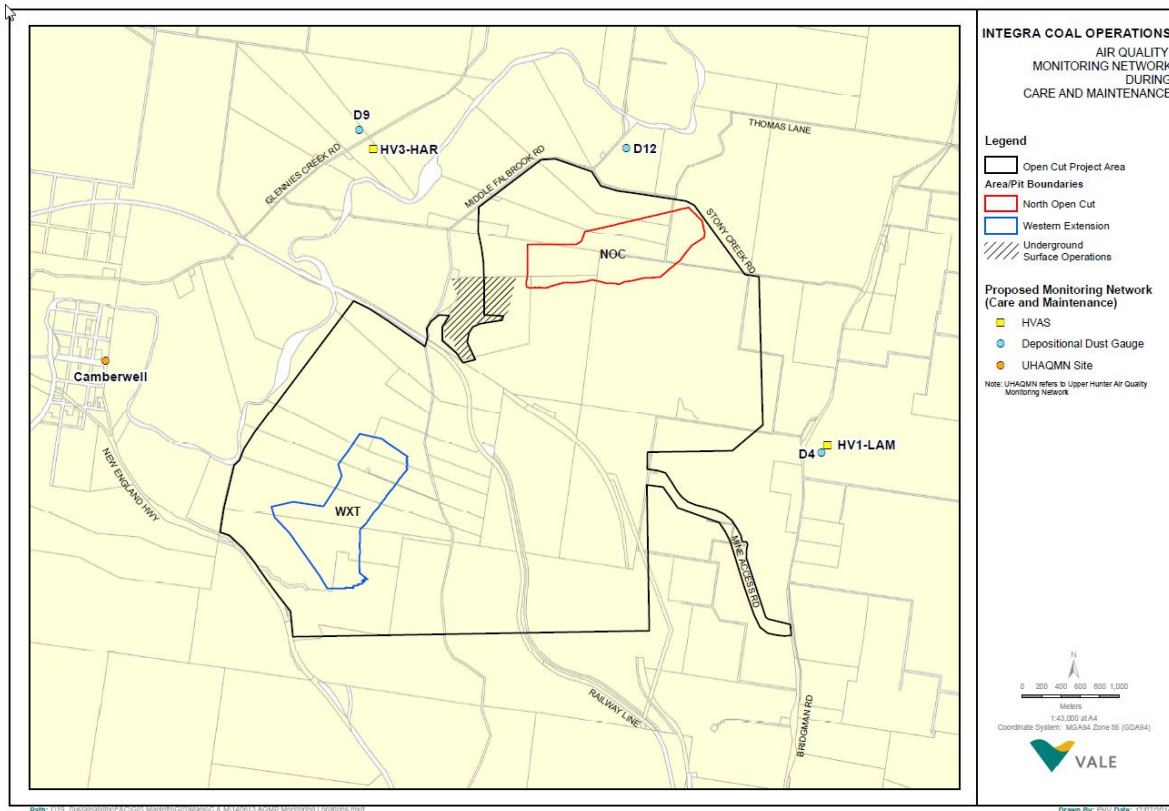


Figure 1 Air Quality Monitoring Sites

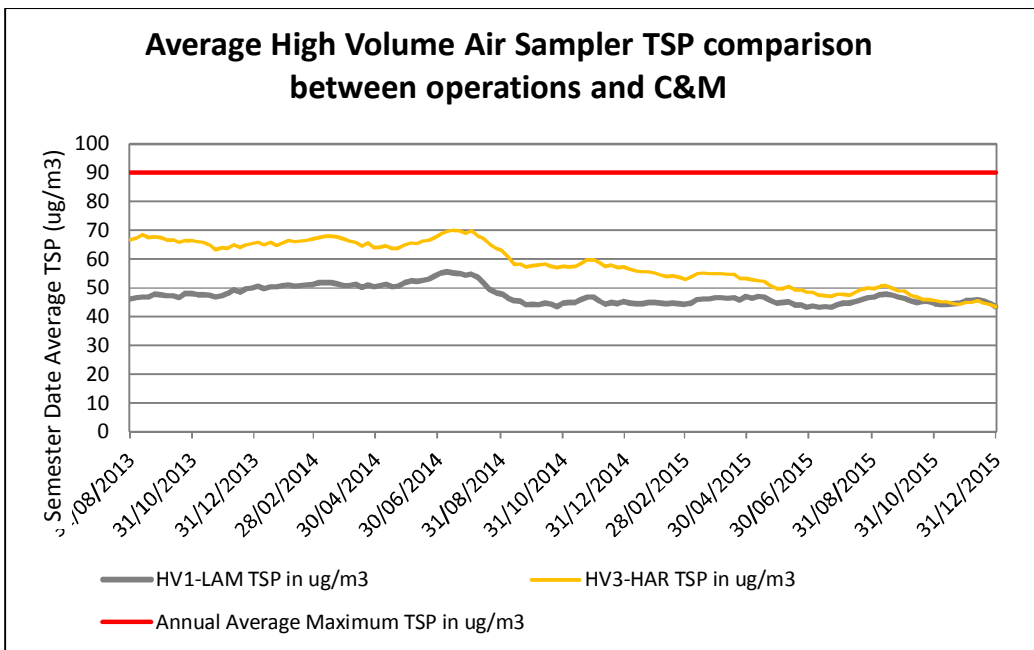


Figure 2 Total Suspended Particulates monitoring results

TSP results have shown a decrease during C&M.

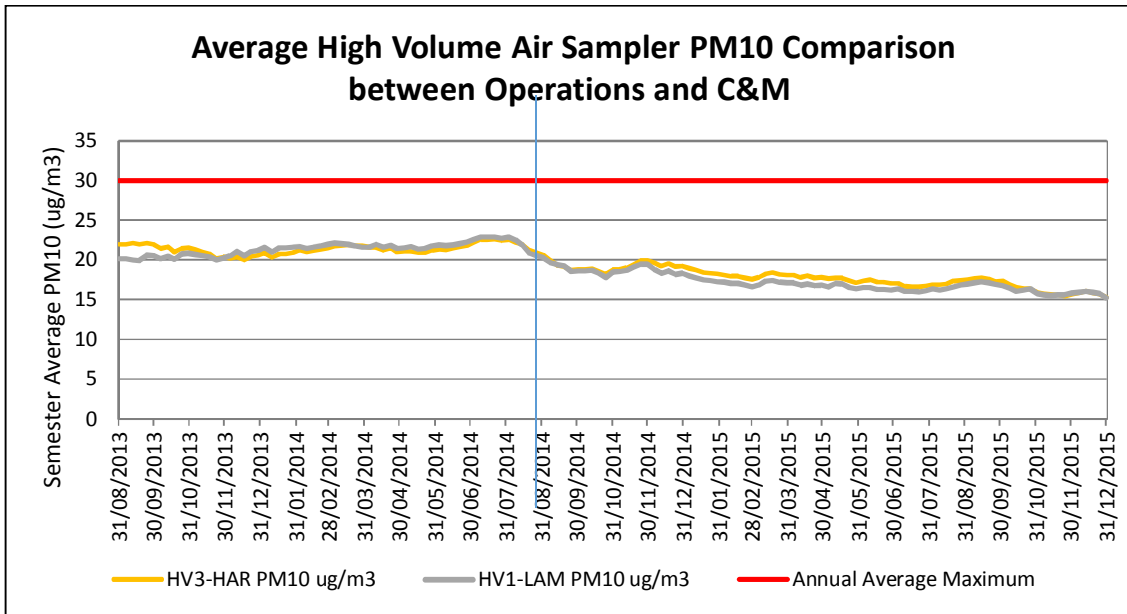


Figure 3 PM10 Monitoring results

PM10 monitoring results also showed a decrease during C&M

Question: Is the annual air quality maximum going to change from 30  $\mu\text{g}/\text{m}^3$  to 25  $\mu\text{g}/\text{m}^3$ ?

No. New NEPM standard has been released. Which will not change approval conditions for the operation. Air quality standards will be updated for populated areas and will eventually be reflected in approval conditions for new operations.

- Water Quality

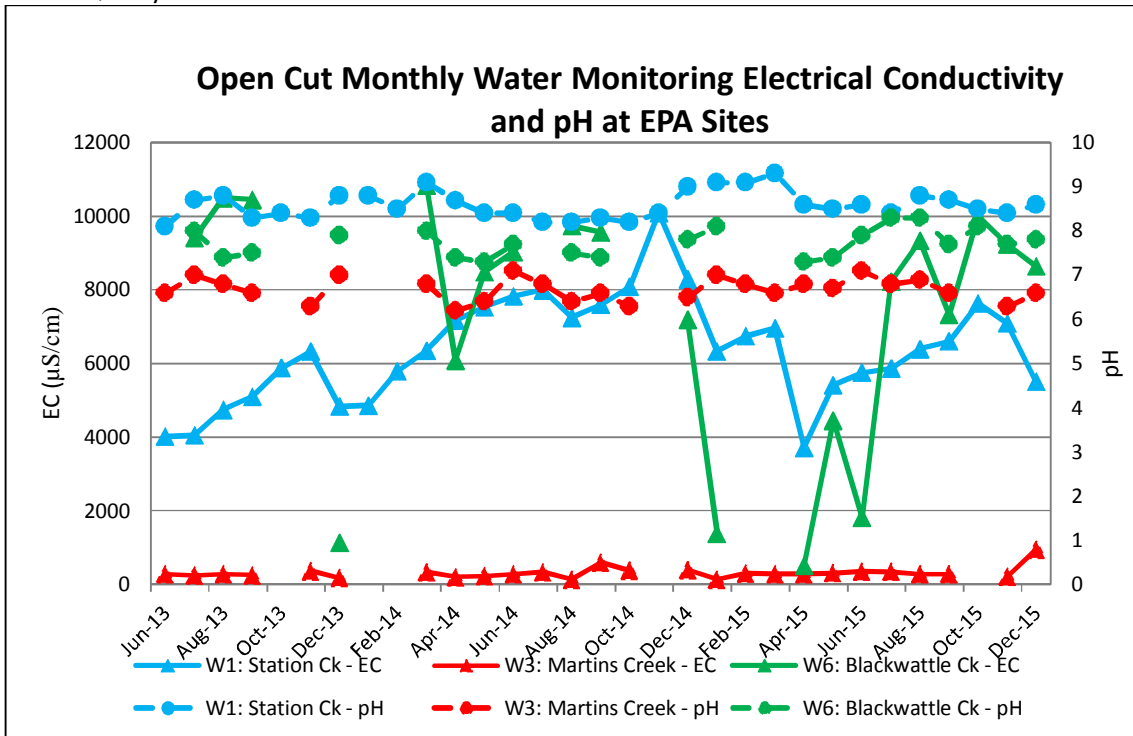


Figure 4 Water Quality Monitoring Results

Water quality monitoring results have shown little if any change during C&M.

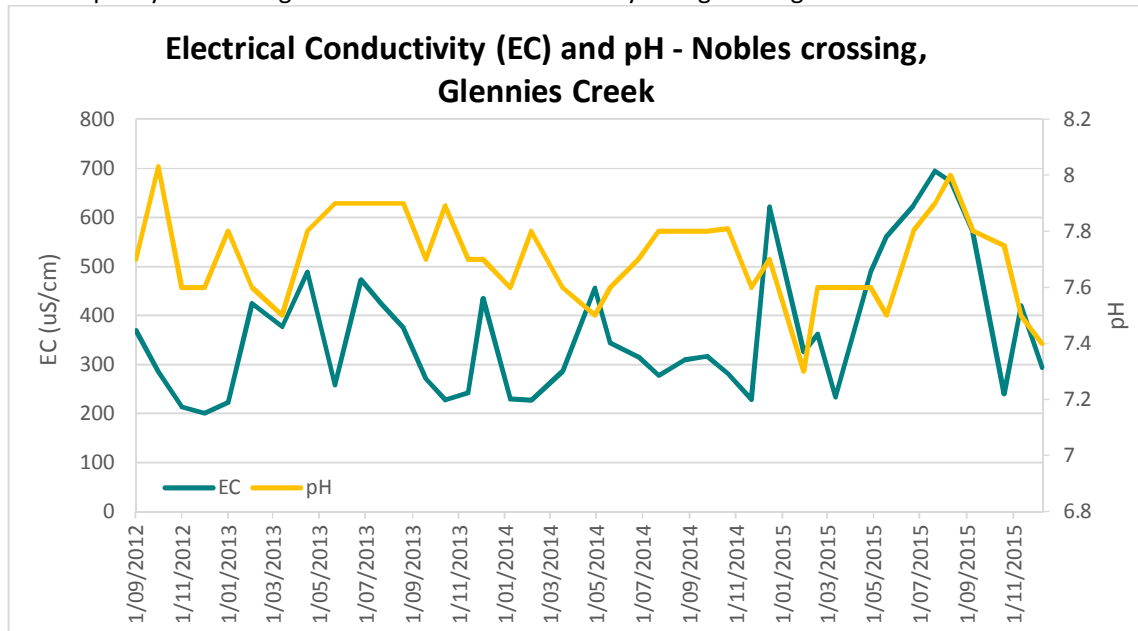


Figure 5 Glennies Creek Water Quality Monitoring Results.

- Modification 4 Biodiversity Offset Strategy update:
  - 10<sup>th</sup> December 2015 - Planning Assessment Commission (PAC) visited site for a presentation and site inspection.
  - 11<sup>th</sup> December 2015 - PAC meeting was convened whereby community members and environmental groups voiced their opinion on Modification 4.
  - Modification 4 still waiting determination from PAC.
  
- Community Complaints
  - 3 dust complaints
  - 2 water enquiries
  
- One reportable incident between January-December 2015. Valve on clean water pipeline forced open releasing clean water into Station Creek. Found during monthly inspections on 22<sup>nd</sup> September 2015 while undertaking monthly inspections.

Question: Why is this pipeline not monitored?

This is a clean water pipeline and as such the release of clean water into the creek is not an environmental issue or breach to the EPL.

Question: Why was this not reported to the Police?

Not necessary as Police not interested in the issue.

Question: Condition of the water.

The 10 fan sprays have been located in the west pit and the 2 spray water lines are located on the dump. These have been turned off. These sprays will be trailed for a period of time to access their effectiveness in terms of running costs and quantities of water removed.

## **Approvals**

- Purchase of Integra Complex. Glencore as H. V Coking Coal will take over the underground and Bloomfield will take over the open cut.
- Operations are still covered by the same development consent.
- Modification 5 has been submitted to allow ROM coal to be run to the Rix's Creek CHPP
- Modification 6 has been submitted to DPE to split the development consents back into separate individual approvals for underground and open cut approvals. This is currently on exhibition.
- Rix's Creek modification 7 is to allow ROM coal to be run to the RCN CHPP was submitted the same time as the Mod 5 to the current Integra consent.
- EPL 3390 – Integra was transferred to Glencore with a premises boundary variation to include only the underground operation.
- The current Rix's Creek EPL3391 had the premises boundary varied to combine Rix's Creek Mine and Rix's Creek North operations under the one EPL3391.

## **Overview of Rix's Creek North recommencing operations.**

- Bloomfield group will operate Open Cut operations as Rix's Creek North. This will control Open Cut Mining in the North, South and Western Extension Areas.
- A Mining Operations Plan for RCN was approved by DRE on the 18th January 2016.
- The approved MOP for RCN proposes a much lower production rate of up to 2.3 million tonnes of run of mine coal annually.
- Environmental Management Plans have been modified and are being reviewed by Department of Planning and Environment.
- Combine Rix's Creek North into the Rix's Creek framework so both sites operate under the same framework.

Question: How many people will be employed?

In total about 60 people.

Question: How can start operations without leases being changed.

The mining tenements have been transferred to Glencore and Bloomfield. One CI 382 has to be divided between both operators.

Question: Will you run up the washery.

The plan is to use the washery to wash the open cut coal and was day shift only. In the short term coal may be washed through the Rix's Creek washery until the RCN washery is operational. An agreement exists to wash and load underground coal when it recommences operations.

Question: Can Rix's Creek handle all the coal.

Yes but will have to operate 7 days 24 hours a day.

Question: How does the North open cut pit fit into the program?

It is not planned to mine in the North open cut during the current MOP seven year period.

## **Ongoing & Proposed Care & Maintenance activities at Integra Underground Mine.**

- Glencore took over care and maintenance activities on 18<sup>th</sup> December 2015
- Glencore has no plans to restart the operation in the near term and we will continue to evaluate a number of options in the months ahead.
- Intent of Care and Maintenance is to:
  - Maintain legislative compliance

- Maintain the mine in a safe and serviceable state to resume general operations when/if authorised to do so
- Minimise cost to the business
- Preserve the assets during the period to mitigate the cost of restarting operations.
- Approvals, Environment & Community work program during this period:
  - Modification of all approvals to achieve a stand-alone operation
  - Align and implement the Integra Underground Environmental Management System to be consistent with Glencore standards and requirements
  - Identify opportunities for synergies in environmental management and community engagement with the adjacent Mt Owen Complex and other Glencore mines in the Greater Ravensworth Area where practicable
  - Consultation with regulators, neighbours and other stakeholders

### **General Business**

Dissolving Integra Coal Operations Community Consultative Committee.

- It is proposed to dissolve the Integra Coal Operations CCC and amalgamate with the Rix's Creek Mines CCC (for Rix's Creek North) and the Mt Owen Complex CCC (for Integra Underground)
- The Mt Owen Complex CCC meets quarterly, with the next meeting proposed for 18 March at the Glendell Mine site
- Rix's Creek Mine CCC is proposed for May 2016, date to be confirmed.

Noted - Lyn McBain: Community – CCC not consulted with throughout the process.

Outcome from CCC members is that the Integra CCC be amalgamated into the Mt Owen and Rix's Creek CCC's is:-

- Greg Hall would like to join the MT Owen CCC. Deidre Olofsson is already a community member. David Moran and Greg Hall did not wish to join.
- The entire 4 members: - Lyn McBain, Deidre Olofsson, Greg Hall and David Moran; would join the Rix's Creek CCC.

---

**Meeting Closed**                      10:07am

---