



Heritage Management Plan Rixs Creek North Rix's Creek Pty Limited

Part A - Aboriginal Heritage Management Plan

Part B – Stage 2 Non-Aboriginal Heritage Management Plan



Part A

Aboriginal Heritage Management Plan

Rixs Creek North

Wonnarua Heritage - Camberwell, Hunter Valley, NSW

for Rixs Creek North

Originally Prepared for

R.W.Corkery & Co Pty Ltd

Originally Prepared by

AECOM Australia Pty Ltd

Level 8, 17 York Street, Sydney NSW 2000, Australia

T +61 2 8023 9333 F +61 7 8023 9399 www.aecom.com

ABN 20 093 846 925

Original plan -2 December 2010

Updated Version 6 January 2016

Document Title:	Aboriginal Heritage Management Plan – Rixs Creek North		Document Owner:	John Hindmarsh
Prepared By:	John Hindmarsh	Print Date:	12-Feb-16	Version No: 6.0
Reviewed By:				Issue Date: 12/02/2016
Approved By:	Garry Bailey	Review Frequency:	36 MONTHS	Page No: 2 of 69

Quality Information

Document Aboriginal Heritage Management Plan Integra Open Cut Project (Now – Rixs Creek North)

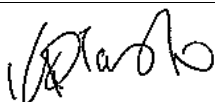
Ref 60186230

Date 2 December 2010 – Modified 25 May 2012

Prepared by Neville Baker

Reviewed by Ruth Baker

Revision History

Revision	Revision Date	Details	Authorised	
			Name/Position	Signature
1B	2-Nov-2010	Revision of Original following DECCW comments	Neville Baker Associate Director - Environment	
2	19-Nov-2010	Revision of Original following Aboriginal Consultation	Neville Baker Associate Director - Environment	
3	30-Nov-2010	Final Document for Endorsement by Department of Planning	Luke Kirkwood Archaeologist - Environment	
4	25-May-2012	Modification	John Trotter Integra Coal Operations P/L	
5	4-Jun-2012	Final Document for Endorsement by Department of Planning & Infrastructure	Kieran Plasto Sustainability Mgr Integra Coal Operations P/L	
6	January 2016	Updated to operational status after care & maintenance	John Hindmarsh	

Document Title:	Aboriginal Heritage Management Plan – Rixs Creek North		Document Owner:	John Hindmarsh
Prepared By:	John Hindmarsh	Print Date:	12-Feb-16	Version No: 6.0
Reviewed By:		Review Frequency:	36 MONTHS	Issue Date: 12/02/2016
Approved By:	Garry Bailey			Page No: 3 of 69

Table of Contents

1.0	Introduction	1
1.1	Background	1
1.1.1	Scope of this Document	1
1.1.2	Location	2
1.1.3	Area Covered by AHMP	2
1.1.4	Project Impacts	2
1.1.5	Aboriginal Heritage Sites	2
1.2	Aim and Objectives	13
1.3	Legislative & Planning Context	13
1.3.1	Project Approval – Environmental Planning & Assessment Act 1979	13
1.3.2	National Parks & Wildlife Act 1974	13
2.0	Impacts to Aboriginal Sites and Aboriginal Heritage Values	15
2.1.1	Aboriginal Sites	15
2.1.2	Aboriginal Heritage Values	15
3.0	Aboriginal Consultation	17
3.1	Status of Consultation following the EA	17
3.2	Identification of Aboriginal Stakeholders	17
3.3	Consultation for this AHMP	18
3.3.1	DECCW Consultation	18
3.3.2	Aboriginal Consultation	18
3.3.3	Consultation Outcomes	19
3.4	Ongoing Consultation During Mining	20
4.0	Management and Salvage	21
4.1	Scope of Management	21
4.2	Aboriginal Site Survey	22
4.3	Mapping and Fencing of Aboriginal Sites	22
4.4	Aboriginal Site Salvage	22
4.4.1	Site Collection	22
4.4.2	Archaeological Excavations	23
4.4.3	Timing of Salvage Activities and Impacts	23
4.5	Aboriginal Keeping Place	24
4.6	Management of Displaced Artefacts in Topsoil Stockpiles	24
4.7	New Site Recording	24
4.8	New Ground Impacts within the Project Approval Area	24
4.9	Human Remains	25
4.10	Aboriginal Cultural Heritage Awareness Induction	25
4.11	Ground Impacts from Weed and Feral Animal Management	25
4.12	Exemptions for Emergency Vegetation Management	25
4.13	Rubbish	25
4.14	Infrastructure Maintenance	25
4.15	Livestock	25
5.0	Implementation	26
Appendix A		
	Aboriginal Sites	A
Appendix B		
	Aboriginal Consultation Log	B

List of Tables

Table 1	Draft Statement of Commitments regarding Aboriginal Heritage	1
Table 2	Aboriginal Sites: Significance and Impact	15
Table 3	Registered Aboriginal Stakeholders	17
Table 4	Issues Raised and Addressed during Aboriginal Consultation	19
Table 5	EA Draft Commitments and AHMP linkage	21
Table 6	Management Aspects and AHMP Linkage	21
Table 7	Implementation	26

List of Figures

Figure 1	Open Cut Project Areas and Components (EA Figure 1.2)	3
Figure 2	Aboriginal Sites (based on EA Figure 13.3)	11

1.0 Introduction

1.1 Background

1.1.1 Scope of this Document

This Aboriginal Heritage Management Plan (AHMP) sets out the procedures for care and salvage of Aboriginal objects identified within Integra Coal Operations' Open Cut Project. The AHMP is prepared in accordance with the draft statement of commitments (Item I1 - **Table 1**) made in the original Environmental Assessment (EA) for the Integra Open Cut¹ and in accordance with the EA and condition 47 of Planning Approval #08_0102.

This plan is current for the life of the Development Approval.

The draft statement of commitments in Chapter 17 of the EA regarding Aboriginal heritage is set out in **Table 1** below. This is also consistent with the revised statement of commitments made in chapter 6 of the submissions report.

Table 1 Draft Statement of Commitments regarding Aboriginal Heritage

Item	Mitigation Measure and Commitment	Implementation
I1	All actions and strategies for the management of cultural heritage values will be defined in an Aboriginal Cultural Heritage Management Plan developed in consultation with participating Aboriginal groups.	Prior to the commencement of operations.
I2	Prior to any soil disturbing activities, archaeological surveys will be conducted in those areas within the Open Cut Area to be impacted but which have not been surveyed to date. These areas include the Dulwich property.	Prior to the commencement of operations within potentially affected area not previously surveyed.
I3	Sites which will not be impacted by open cut mining will be identified on mine plans with the requirement not to disturb the ground in those areas. If there is a risk of impact, temporary fencing will be erected and restrictions placed on access.	Prior to the commencement of operations.
I4	Site which may be directly or indirectly impacted by activities associated with mining will be identified on mine plans with development avoiding those sites. Where development associated activities occur in close proximity to sites, temporary fencing will be constructed. Where direct impact is unavoidable the strategies outline in I5 will be followed.	Prior to the commencement of operations.
I5	Sites which will be directly impacted by open cut mining will be subject to: Collection and recording of surface artefacts and storage in accordance with the requirements of Aboriginal Groups; and Targeted subsurface salvage excavation programs as determined in consultation with the Aboriginal stakeholders.	Prior to disturbance.
I6	A 'Keeping Place' will be provided for the secure storage of cultural material collected. The Keeping Place will be determined and agreed in consultation with the Aboriginal Groups during the formulation of the Aboriginal Cultural Heritage Management Plan. The Keeping Place will be retained in perpetuity subject to the recommendations of the Aboriginal Groups with regard to the long-term positioning of the sites.	Prior to the commencement of operations.

¹ URS 2008 **Integra Open Cut Environmental Assessment**

Document Title:	Aboriginal Heritage Management Plan – Rixs Creek North		Document Owner:	John Hindmarsh
Prepared By:	John Hindmarsh	Print Date:	12-Feb-16	Version No: 6.0
Reviewed By:				Issue Date: 12/02/2016
Approved By:	Garry Bailey	Review Frequency:	36 MONTHS	Page No: 1 of 69

1.1.2 Location

Rixs Creek North is located 10 km north of Singleton in the Hunter Valley, NSW. The Open Cut Extension Project (the Open Cut Extension Area – refer **Figure 1**) covers an area of 801 hectares and expands on existing open cut coal mining.

1.1.3 Area Covered by AHMP

The land covered by this AHMP includes all of the Open Cut Extension Area with primary focus on the area where Aboriginal sites occur and where survey is to be completed west of the existing South Pit. Reference is made to the Existing South Pit, South Pit Haul Road and Coal Handling and Preparation Plant CHPP area only to confirm that no further Aboriginal site management action is required in these areas. The area is shown on **Figure 1**.

1.1.4 Project Impacts

The Open Cut Extension Area comprises four principal component areas of activity defined as:

- the Open Cut Area (284 ha) including the 160 ha area from which soil would be extracted. Of the remaining 124 ha, approximately 62 ha may be disturbed as a consequence of mining activities and approximately 62 ha will remain undisturbed;
- the existing South Pit (247 ha)²;
- the South Pit Haul Road (13 ha);
- the CHPP Area (57 ha)
- an area of approximately 200 ha which will not be disturbed, including a large area of intact land between the proposed open cut western extension and Glennies Creek, and largely post-mining constructed landforms in the south and southeast.

The mine area is separated into the Full Pit Extent, which contains the Dulwich Property and will only be mined subject to the acquisition of this property, and the Part Pit Extent which will be the area that is mined if the Dulwich Property is not acquired (**Figure 2**). A full description of the proposed operations is provided in the EA (URS 2009).

The Western Extension is located immediately to the west of the existing South Pit. The proposed mining activities within the Full Pit Extent would disturb approximately 160 ha. The activities that will result in surface disturbance (approximately 62 ha) external to the Mine Area include soil stockpiling, construction of water management structures and remediation activities along Station Creek, all directly to the west of the Mine Area (**Figure 1**).

1.1.5 Aboriginal Heritage Sites

Aboriginal heritage sites occur in the relatively undisturbed western part of the Open Cut Extension Area between the current open cut and Glennies Creek. An Aboriginal heritage assessment was conducted over most of the western part of the Open Cut Extension Area in 2008 by Navin Officer Pty Ltd as part of the EA prepared by URS. An area of approximately 80 ha in the south western part of the western open cut extension was not surveyed. An area of approximately 15 ha in association with the Dulwich property was also not surveyed due to separate land access issues which may influence mine planning. Completion of the survey is addressed in this AHMP.

A total of 67 Aboriginal sites were reported in the 2008 assessment. With the exception of three “possible scarred trees”, all are stone artefact sites comprising between one or more Aboriginal flaked stone artefacts. In addition large areas of archaeological potential were identified, including areas of particularly high potential associated with Station Creek and Glennies Creek.

Approximately half of the Open Cut Project EA area in the east is disturbed with no Aboriginal heritage potential due to major landform modification and land impact from construction of infrastructure.

² Ref: EA page 1.2 - note that the EA Appendix H Aboriginal Archaeological Assessment incorrectly refers to 274 ha

Document Title:	Aboriginal Heritage Management Plan – Rixs Creek North		Document Owner:	John Hindmarsh
Prepared By:	John Hindmarsh	Print Date:	12-Feb-16	Version No: 6.0
Reviewed By:				Issue Date: 12/02/2016
Approved By:	Garry Bailey	Review Frequency:	36 MONTHS	Page No: 2 of 69

Figure 1 Open Cut Project Areas and Components (EA Figure 1.2)

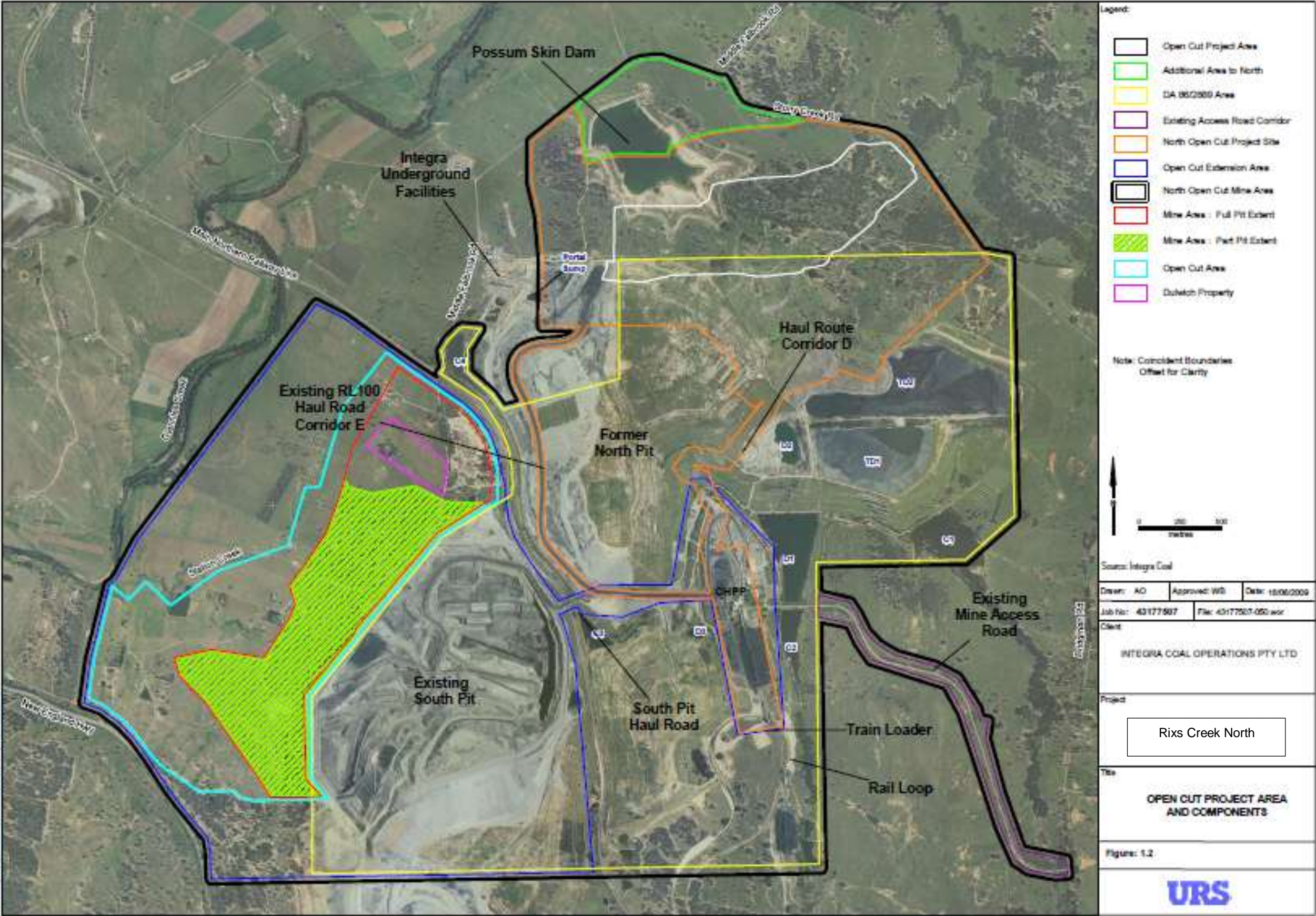
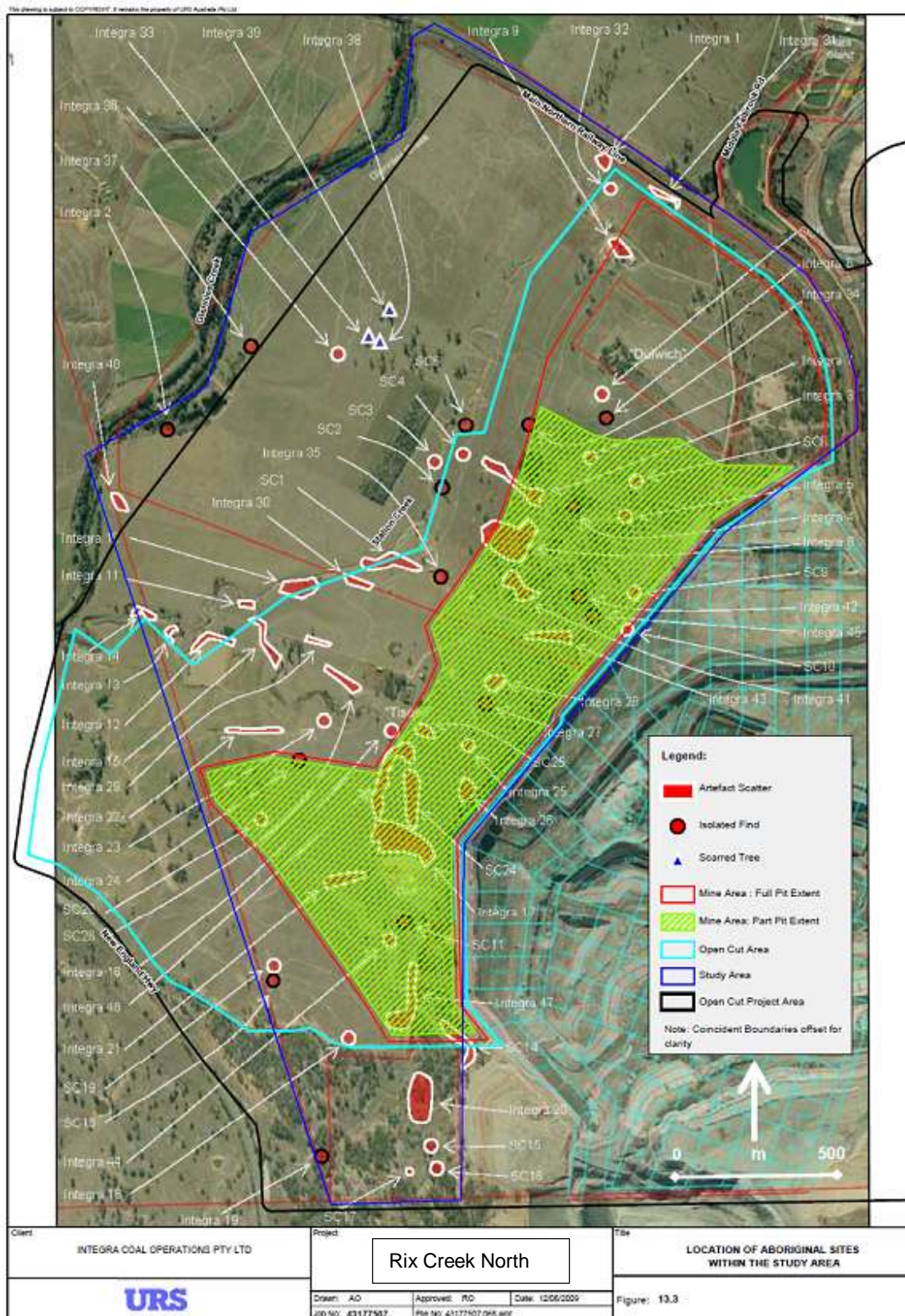


Figure 2 Aboriginal Sites (based on EA Figure 13.3)

(note that SC14 has already been salvaged)

Document Title:	Aboriginal Heritage Management Plan – Rixs Creek North		Document Owner:	John Hindmarsh
Prepared By:	John Hindmarsh	Print Date:	12-Feb-16	Version No: 6.0
Reviewed By:				Issue Date: 12/02/2016
Approved By:	Garry Bailey	Review Frequency:	36 MONTHS	Page No: 11 of 69



1.2 Aim and Objectives

The aim of the AHMP is to provide for the appreciation of Aboriginal heritage values in the Open Cut Extension Area by future generations either through protection of sites where impact is avoidable or through salvage of a sample of Aboriginal objects by salvage collections and excavations;

In addition, the objectives of this AHMP are:

- to identify ongoing management measures for the care of Aboriginal sites where mining impacts are avoidable;
- to establish an ongoing Aboriginal stakeholder consultation process;
- to describe the manner in which certain Aboriginal sites will be salvaged;
- to provide a summary research design and work plan for the sub surface excavation of select sites and areas; and
- to describe a program for Aboriginal site survey and assessment in areas not addressed by the original EA.

The Aboriginal sites are listed in this AHMP. The reader is referred to the original EA for further details of Aboriginal site characteristics as well as archaeological and environmental background not directly relevant to Aboriginal site management.

1.3 Legislative & Planning Context

1.3.1 Project Approval – Environmental Planning & Assessment Act 1979

Integra Open Cut was approved under Project Approval (08_0102) issued by the Minister for Planning under Major Project under Part 3A of the *Environmental Planning and Assessment Act 1979*. Projects with development approval under Part 3A of the Act do not require a subsequent Aboriginal Heritage Impact Permit under Part 6 of the *National Parks and Wildlife Act 1974*. This AHMP has been prepared in accordance with the commitment made in the EA and as required by Condition 47 of PA 08_0102.

There were no formal NSW AHMP guidelines published by the Department of Environment, Climate Change and Water (DECCW) at the time of preparing this AHMP.

DECCW were consulted in regard to a previous draft, prepared by another consultant in September 2010, to provide input and confirm the suitability of the proposed structure. DECCW comments on the previous draft in regard to the need to address salvage research design, fencing, management of feral animals and weeds were taken into account by AECOM in compiling this revised draft AHMP.

Aboriginal heritage is managed under the conditions of the Part 3A Project Approval granted for the project. This AHMP has statutory force in this regard because it is prepared in accordance with a condition of the Part 3A Project Approval.

1.3.2 National Parks & Wildlife Act 1974

A development with Project Approval under Part 3A does not require an Aboriginal Heritage Impact Permit for impacts to Aboriginal sites or salvage of Aboriginal sites.

The *National Parks and Wildlife Act 1974* (NPW Act), administered by DECCW, is the primary legislation for the protection of Aboriginal cultural heritage in NSW. The NPW Act gives the Director General of DECCW responsibility for the proper care, preservation and protection of 'Aboriginal objects' and 'Aboriginal places', defined under the Act as follows:

- an *Aboriginal object* is any deposit, object or material evidence (that is not a handicraft made for sale) relating to Aboriginal habitation of NSW, before or during the occupation of that area by persons of non-Aboriginal extraction (and includes Aboriginal remains).
- an *Aboriginal place* is a place declared so by the Minister administering the NPW Act because the place is or was of special significance to Aboriginal culture. It may or may not contain Aboriginal objects.

Part 6 of the NPW Act provides specific protection for Aboriginal objects and places by making it an offence to harm them. An *Aboriginal Heritage Impact Permit* (AHIP) should be obtained if impacts to Aboriginal objects

Document Title:	Aboriginal Heritage Management Plan – Rixs Creek North		Document Owner:	John Hindmarsh	
Prepared By:	John Hindmarsh	Print Date:	12-Feb-16	Version No:	6.0
Reviewed By:				Issue Date:	12/02/2016
Approved By:	Garry Bailey	Review Frequency:	36 MONTHS	Page No:	13 of 69

and/or places are anticipated. Development under a Project Approval under Part 3A of the EP&A Act does not require an AHIP for harm to Aboriginal sites and objects.

S89A of the Act requires notification of the location of sites of Aboriginal objects within a reasonable time, with penalties for non-notification, including daily penalties. S89A is binding in all instances including Part 3A projects.

Document Title:	Aboriginal Heritage Management Plan – Rixs Creek North		Document Owner:	John Hindmarsh
Prepared By:	John Hindmarsh	Print Date:	12-Feb-16	Version No: 6.0
Reviewed By:				Issue Date: 12/02/2016
Approved By:	Garry Bailey	Review Frequency:	36 MONTHS	Page No: 14 of 69

2.0 Impacts to Aboriginal Sites and Aboriginal Heritage Values

2.1.1 Aboriginal Sites

Aboriginal heritage sites and areas of archaeological sensitivity within the area of interest are summarised based on the list provided in the EA and listed in **Appendix A**. For ease of reference, site names are used as described in the EA Aboriginal heritage report. AHIMS site numbers for each of these sites are listed in **Appendix A**. All sites and sensitive areas occur within the western open cut extension area.

The EA Appendix H report identified the following site groupings according to scientific significance and anticipated level of impact (Navin Officer 2008: p.44, Table 8.1).

Table 2 Aboriginal Sites: Significance and Impact

Significance rating	Direct impact from open cut mining	Possible direct or indirect impact from associated activities	No impact	Total
Low	Integra 4, 6, 7, 9, 21, 24, 25, 27, 28, 31, 34, 35, 41, 42, 43, 44, 45 SC6, SC8, SC9, SC10, SC11, SC20	Integra 1, 12, 18, 22, 29, 32 SC2, SC5, SC18	Integra 2, 19 SC15, SC16, SC17	37 sites
Moderate	Integra 3, 5, 8, 16, 17, 26, 46, 47 SC24, SC25 (SC14 noted in EA but salvaged in 2009 ³)	Integra 10, 11, 15, 23, 30 SC1, SC3, SC4, SC19, SC26	Integra 13, 14, 20, 36, 37, 40	27 sites
High	-		Integra 33, 38, 39	3 sites
Total:	34 sites	19 sites	14 sites	67 sites

Archaeologically sensitive areas were mapped as occurring along broad areas associated with Station Creek and Glennies Creek. Few parts of the western open cut extension area were considered not to be archaeologically sensitive. Areas of "high" and "moderate" potential were mapped in addition to "alluvium" areas. The definitions of these terms as used in the Navin Officer report are not provided and are assumed to mean all have potential for archaeological materials to occur, but with differing artefact densities or levels of scientific significance anticipated.

The details and reported cultural significance of these sites is provided in **Appendix A**.

2.1.2 Aboriginal Heritage Values

The Aboriginal heritage value of the Open Cut Extension Area lies in the presence of archaeological evidence within the western extension area and its capacity to provide some insight to pre-European Aboriginal land use. Aboriginal stakeholders did not provide indication of socio-cultural Aboriginal heritage value that elevated any particular land area of Aboriginal site above others in the region. The Aboriginal heritage values identified in the assessment therefore relate primarily to the archaeological evidence.

The following summary of Aboriginal site significance was made by Navin Officer (2008:40).

³ One site reported in the EA, SC14, was salvaged in early 2009 under AHIP 1096800 (22 January 2009) due to the fact that it was mostly located with the then approved mine area. SC14 is not an existing site for management.

Based on surface manifestations, all of the artefact-based sites recorded in the study area represent typical open artefact sites in the lowlands of the Hunter Valley. None of the sites are considered to be rare or have particularly exceptional characteristics, either in relation to their location, size or content. However, this is an initial assessment and further research may change these observations and significance assessments.

... Many of the sites have undergone previous disturbance, which can reduce the scientific research potential of the site. However, there are a number of sites within depositional contexts, where the accumulation of deposits can assist in preserving cultural material. These initial significance assessments are based on site disturbance and the potential of the site to provide further information through excavation and analysis of the cultural deposits.

None of the sites are considered to have high representational value of aesthetic value. The educational value of the sites is linked to the scientific research potential, and is therefore part of the scientific assessment.

This includes analysis of the artefacts, the potential for establishing the chronology of the sites through recovery of dateable material and the potential for palaeo-environmental information held within the sediments.

Document Title:	Aboriginal Heritage Management Plan – Rixs Creek North		Document Owner:	John Hindmarsh
Prepared By:	John Hindmarsh	Print Date:	12-Feb-16	Version No: 6.0
Reviewed By:				Issue Date: 12/02/2016
Approved By:	Garry Bailey	Review Frequency:	36 MONTHS	Page No: 16 of 69

3.0 Aboriginal Consultation

3.1 Status of Consultation following the EA

Aboriginal consultation for the development of this AHMP follows the process commenced during development of the Aboriginal heritage assessment for the EA. This AHMP relies on the initial stages of Aboriginal stakeholder identification, notification and registration as completed for the EA and briefly described here.

3.2 Identification of Aboriginal Stakeholders

Consultation for the EA was conducted by GSS Environmental (GSS) in accordance with the DEC 2004 *Interim Community Consultation Guidelines*. The GSS Aboriginal consultation report was attached as Appendix 1 to the EA Appendix H Aboriginal Heritage Report.

The GSS report indicates a total of 14 Aboriginal organisations or individuals registered as Aboriginal stakeholders. Although reference is made by GSS to 34 “separate bodies” consulted, the documentation shows “bodies” included government agencies and those Aboriginal groups who did not respond to the invitation to register interest. Page 6 of the GSS report lists 16 groups, however DECCW is counted as one of the 16 in the list and Barkuma and Gidaa Walang are listed separately, although they are one and the same body as shown below.

The 14 registered Aboriginal stakeholders for the Open Cut Extension Area are listed below. The trading names listed represent a mix of associations and individuals. In preparing **Table 3**, reference was made to the websites of the Australian Securities and Investment Commission (ASIC), the Office of the Registrar of Indigenous Corporations (ORIC) and ABNLookup which lists trading names of individual persons. The contact person as identified in the ASIC or ABNLookup websites is listed. The contact person is the authorised person to comment on behalf of the listed stakeholder under the Aboriginal Community Consultation Guidelines 2010. The contact person may provide written authorisation to another to represent them.

Table 3 Registered Aboriginal Stakeholders

Trading Name	Status	Contact Person
Wanaruah Local Aboriginal Land Council	Corporation	Suzie Worth
Ungooroo Aboriginal Corporation	Association	Alan Paget
Ungooroo Cultural & Community Services	Individual	Rhonda Ward
Barkuma Neighbourhood Centre trading as Gidawa Walang	Association	Ann Hickey
Wattaka Wonnarua Cultural Consultant Services	Individual	Des Hickey
Upper Hunter Wonnarua Council	Association	Tracey Skene
Hunter Valley Culture Consultants	Individual	Christine Matthews
Aboriginal Native Title Elders Consultants	Individual	Margaret Matthews
Giwiir Consultants	Individual	Rodney Matthews
Wonnarua Custodians	Individual	David Foot
Nur-run-gee	Company	Len Anderson

Document Title:	Aboriginal Heritage Management Plan – Rixs Creek North		Document Owner:	John Hindmarsh
Prepared By:	John Hindmarsh	Print Date:	12-Feb-16	Version No: 6.0
Reviewed By:				Issue Date: 12/02/2016
Approved By:	Garry Bailey	Review Frequency:	36 MONTHS	Page No: 17 of 69

Trading Name	Status	Contact Person
Wonnarua Culture Heritage	Individual	Gordon Griffiths
Yarrawalk (Tocomwall Pty Ltd)	Company	Scott Franks
Upper Hunter Heritage Consultants	Individual	Darrel Matthews

3.3 Consultation for this AHMP

3.3.1 DECCW Consultation

DECCW was consulted through provision of an early draft of the AHMP (prepared by another consultant) for comment. Comment was received by R.W.Corkery on 24 September 2010 by email from Sarah Paddington, Acting Manager Planning & Assessment Branch, Environmental Planning and Regulation Group, North East Branch. Follow up comments were received by R.W.Corkery on or about 29 September 2010.

The comments identified DECCW's requirements in regard to:

- inclusion of the planning context;
- relevant legislative context of Aboriginal heritage management planning;
- details of consultation;
- salvage methodology and research questions;
- roles and responsibilities; and
- aspects of management other than salvage (fencing, management of feral animals, weeds, etc.).

The aspects have been addressed in this AHMP as a result of this consultation.

3.3.2 Aboriginal Consultation

An Aboriginal Consultation Log is appended to this AHMP at **Appendix B**.

During the preparation of this AHMP all registered Aboriginal stakeholders were contacted by letter on 1 November 2010 advising that AECOM was preparing the AHMP taking into account certain matters regarding the salvage raised by the Aboriginal stakeholders with DECCW and communicated to R.W.Corkery by email in late September 2010.

A draft version of this AHMP was sent to registered Aboriginal stakeholders for comment on 4 November 2010.

All registered Aboriginal stakeholders were contacted by phone on 10th and 11th November 2010 regarding the impending meeting on 18 November 2010.

A meeting to discuss the draft AHMP was held at Integra's Camberwell office on 18 November 2010, attended by the following representatives of registered Aboriginal stakeholders:

- Barry French (Yarrawalk);
- Scott Franks (Yarrawalk);
- Alan Paget (Ungooroo Aboriginal Corporation);
- Rhonda Ward (Ungooroo Cultural and Community Services);
- Noel Downs (Wanaruah Local Aboriginal Land Council);
- Michelle Stair (Giwir);
- Georgina Berry (Upper Hunter Wonnarua Council);
- Darrel Matthews (Upper Hunter Heritage Consultants);
- Margaret Matthews (Aboriginal Native Title Elders Consultants);
- John Matthews (Hunter Valley Culture Consultants); and

Document Title:	Aboriginal Heritage Management Plan – Rixs Creek North		Document Owner:	John Hindmarsh	
Prepared By:	John Hindmarsh	Print Date:	12-Feb-16	Version No:	6.0
Reviewed By:				Issue Date:	12/02/2016
Approved By:	Garry Bailey	Review Frequency:	36 MONTHS	Page No:	18 of 69

- Des Hickey (Wattaka Wonnarua Cultural Consultant Services).

Les Anderson (Nur-run-gee) and Barbara Foot (Wonnarua Custodians) had indicated to Neville Baker by phone that they would not be attending. Gordon Griffiths (Wonnarua Cultural Heritage) could not be contacted.

The following Aboriginal people also attended the meeting: Maree Waugh, Colleen Stair and Cliff Matthews.

The meeting discussed the version 1B of the AHMP and several changes were requested regarding the explicit noting of Wonnarua heritage on the title cover, the addition of ground penetrating radar within the salvage methodology, and agreement over the temporary storage of salvage Aboriginal heritage material within a locked room at Integra Coal Operations offices prior to eventual deposition with the proposed Keeping Place in Singleton to be constructed with the support of Xstrata. These changes are reflected in the current AHMP wording.

3.3.3 Consultation Outcomes

Comments received during the consultation and manner in which they were addressed are summarised in **Table 4**.

Table 4 Issues Raised and Addressed during Aboriginal Consultation

Aboriginal Stakeholder	Issue Raised	How Addressed
Wanaruah Local Aboriginal Land Council	Site Auditing; wish to have say in who may be selected for physical anthropology if Aboriginal remains are discovered	Provision of annual inspection of protected sites in AHMP; noted in AHMP
Ungooroo Aboriginal Corporation	Comment on use of ground penetrating radar on sites	Incorporated into salvage methodology in AHMP
Ungooroo Cultural & Community Services		
Barkuma Neighbourhood Centre trading as Gidawa Walang		
Wattaka Wonnarua Cultural Consultant Services		
Upper Hunter Wonnarua Council		
Hunter Valley Culture Consultants		
Aboriginal Native Title Elders Consultants	Discussion over whether artefacts could be reburied	Discussed during 18/11/10 meeting with subsequent meeting consensus that artefacts would be stored at Integra offices and then deposited with Singleton Keeping place
Giwiir Consultants		
Wonnarua Custodians		
Nur-run-gee		
Wonnarua Culture Heritage		

Document Title:	Aboriginal Heritage Management Plan – Rixs Creek North		Document Owner:	John Hindmarsh
Prepared By:	John Hindmarsh	Print Date:	12-Feb-16	Version No: 6.0
Reviewed By:				Issue Date: 12/02/2016
Approved By:	Garry Bailey	Review Frequency:	36 MONTHS	Page No: 19 of 69

Aboriginal Stakeholder	Issue Raised	How Addressed
Yarrowalk	Wonnarua cultural heritage should be acknowledged; inclusion of ground penetrating radar in methodology prior to excavation; Aboriginal stakeholders to have copies of site cards if they wish; Aboriginal sites to be recorded with 21 days of their discovery; discussion over keeping place with agreement on final decision; wishes to review the Aboriginal heritage component of the generic induction delivered by Pegasus training; wish to have opportunity to do the work on Aboriginal site maintenance	Incorporated into AHMP; Integra to forward relevant section from generic induction to Scott Franks for review; desire to do work noted by Integra and process for work procurement to be forwarded to Scott Franks
Upper Hunter Heritage Consultants		

A final draft version of the AHMP was distributed to Aboriginal stakeholders on 19 November 2010.

3.4 Ongoing Consultation During Mining

Aboriginal stakeholders listed in this AHMP will be involved in the mitigation works on sites described in **section 4.4** below. All Aboriginal stakeholders will be notified in the event that human remains are discovered in accordance with the procedure in **section 4.9** below. All Aboriginal stakeholders will be informed on the completion of salvage analysis and reporting and will be provided with a copy of the salvage report.

Document Title:	Aboriginal Heritage Management Plan – Rixs Creek North		Document Owner:	John Hindmarsh	
Prepared By:	John Hindmarsh	Print Date:	12-Feb-16	Version No:	6.0
Reviewed By:				Issue Date:	12/02/2016
Approved By:	Garry Bailev	Review Frequency:	36 MONTHS	Page No:	20 of 69

4.0 Management and Salvage

4.1 Scope of Management

Management measures in relation to the Draft Statement of Commitments in the EA are provided in this section. The linkage between Commitment and AHMP section is shown in **Table 5**.

Table 5 EA Draft Commitments and AHMP linkage

Item	Summary Commitment	AHMP Section
I1	Development of AHMP	All of document
I2	Archaeological surveys	4.2
I3	Mapping and fencing of Aboriginal sites not impacted by mining	4.3
I4	Mapping and fencing of Aboriginal sites which may be impacted by mining	4.3
I5	Collection and subsurface salvage of impacted Aboriginal sites	4.4
I6	'Keeping Place' for salvaged Aboriginal objects	4.5

Other management measures in relation to land management and Aboriginal objects include:

Table 6 Management Aspects and AHMP Linkage

Management Area	AHMP Section
Management of displaced Aboriginal artefacts on topsoil stockpiles	4.6
New Aboriginal site recording	4.7
New ground impacts within the project approval area	4.8
Discovery of human remains	4.9
Aboriginal cultural heritage awareness training	4.10
Ground impacts from weed and feral animal management	4.11
Exemptions for emergency vegetation management	4.12
Rubbish	4.13
Infrastructure maintenance	4.14
Livestock	4.15

4.2 Aboriginal Site Survey

An Aboriginal site survey will be conducted within the southwest corner of the western extension prior to the construction of the proposed visual bund in that area. Newly identified sites will be reported to DECCW on AHIMS site recording forms within a reasonable time of recording as required by section 89A of the National Parks & Wildlife Act 1974. Newly recorded sites will be managed in accordance with this AHMP. Impacted sites will be collected and other sites will be fenced.

If Integra gain ownership of the Dulwich property and plan soil disturbing activities on the land, an Aboriginal site survey will be conducted on the land and Aboriginal sites managed in accordance with this AHMP.

4.3 Mapping and Fencing of Aboriginal Sites

Parts of the western open cut extension may not be impacted by mining. Aboriginal sites west of Station Creek and along Station Creek within areas where impacts will not occur will be fenced by star picket and wire fencing with a metal sign attached with the words

ARCHAEOLOGICAL SITE
NO UNAUTHORISED ENTRY
OPERATIONS MANAGER

Fencing will be completed prior to the commencement of operations. Sites to be fenced are indicated in **Appendix A**.

The possible Aboriginal scarred tree sites Integra 33, Integra 38, and Integra 39 will be fenced and managed as Aboriginal sites until a more detailed arborist assessment of the scar origin can be conducted to confirm their status. Following comment from the Department of Planning in December 2010, it is proposed that if necessary, treatment to ensure the long term preservation of the trees from insect pests and mould would be undertaken.

Aboriginal sites which occur within the area impacted by stockpiles and mining associated activity between the open cut and Station Creek need not be fenced. Mitigation measures described in sections **4.4 - 4.15** will be followed for these sites.

In the event that mine planning changes make impacts on sites unavoidable, (subject to reasonable efforts to avoid such sites), fencing will be removed and the sites will be collected in the manner described in **Section 4.4.1** below.

All fencing and signage will be removed from Aboriginal sites on completion of mining operations.

4.4 Aboriginal Site Salvage

4.4.1 Site Collection

Aboriginal sites not within impact areas will not be collected. All Aboriginal sites within impacted areas (see **Appendix A** for list) will be subject to surface collection by rostered Aboriginal stakeholders accompanied by an archaeologist prior to commencement of impact activities according to the following procedure:

- individual artefacts will be flagged;
- the locations of flagged artefacts will be recorded in Differential GPS;
- flagged artefacts will be numbered and collected into a bag labelled with site number, date and collection details;
- artefacts will be retained for recording and report preparation;
- basic attributes will be recorded on collected artefacts: raw material, technological type, implement type, weight, maximum dimension; and
- a descriptive report will be prepared with map of individual artefact locations within site or exposure boundaries.

Following site collections the field archaeologist in consultation with the attending Aboriginal community representatives will provide written notification of the sites cleared for ground disturbance works.

Document Title:	Aboriginal Heritage Management Plan – Rixs Creek North		Document Owner:	John Hindmarsh
Prepared By:	John Hindmarsh	Print Date:	12-Feb-16	Version No: 6.0
Reviewed By:				Issue Date: 12/02/2016
Approved By:	Garry Bailey	Review Frequency:	36 MONTHS	Page No: 22 of 69

4.4.2 Archaeological Excavations

Excavations will be conducted in the three stage process of 1) remote sensing and test excavation, 2) open area hand excavation and 3) large area machine excavation as follows:

1. Test excavations in three intact landform areas in close proximity to recorded sites within areas outside of initial clearing works. Three areas are suggested here but may be changed in the field subject to access and logistical considerations, provided equivalent landform areas are substituted:
 - a. High terrace – slope interface context : north bank of Station Creek tributary just north of Integra 16 and just south of Contractors Office;
 - b. A slope with western outlook context such as Integra 8 or similar as may be determined in the field; and
 - c. a creek-side flat context such as Integra 10 or SC1 within the impact area (i.e. not in the protected part of the site along the creek channel).

Prior to test excavation a remote sensing survey of each of the three areas will be conducted using ground penetrating radar or comparable remote sensing method suited to the ground conditions. The results of the remote sensing will be noted in deciding the placement of subsequent excavations.

Test excavations will comprise in each location 25 test pits each of 1 m² dug by excavator and wet sieved through 3 mm aperture screens. The test pits will be dug systematically at 5 m intervals with the purpose of exploring the local landform area for artefact concentrations with potential for expansion in a large open area excavation.

2. Open area excavations will be dug in two of the above tested locations for the purpose of contrasting assemblages and thus Aboriginal land-use strategies in landform areas within the Glennies Creek Valley. Up to 100 m² will be dug by hand in 50 cm units to the base of the A Unit topsoil. After an initial sample of squares dug in 5 cm spits to define the vertical distribution of artefacts within the soil, each square will be dug as a single context to the base of the topsoil. The excavation will expand according to artefact densities encountered with the goal of recovering knapping floor concentrations to the extent reasonably possible. Where hearth features are encountered a careful sectioning procedure will be followed to record the characteristics and recover charcoal for radiocarbon dating where possible. Charcoal samples will be submitted for dating where suitable samples in reliable archaeological cultural contexts are recovered.
3. Large area machine excavations will be conducted in two areas with course grained mechanical screening for the purpose of recovering larger artefacts such as grindstone and hatchet heads and for the purpose of revealing large widely dispersed and rare cultural features such as hearths. The mechanical methods may be variable and may include either bulldozers, excavators or graders. A broad area will be explored, the size of which cannot be defined, but is anticipated to be larger than 100 m². This method will only be applied as a last-chance method of recovering cultural material and where all other excavation methods have been completed in an area. The method is not expected to be a discovery method leading to hand excavation, rather the method is a broad scale exploratory method with a specific focus on locating rare features. Only where rare features such as hearths are encountered will detailed hand excavation be conducted.

Artefacts recovered from test excavations and open area excavations will be analysed for the purpose of identifying aspects of stone artefact technology and assemblage. These aspects will be analysed to explore the question of Aboriginal settlement patterning and technological organisation within the Upper Hunter, comparing and contrasting with the available reported results of assemblage characteristics for selected major Hunter Valley analyses: e.g. Mt Arthur North, Bettys Creek and Salt Pan Creek.

The research design outlined here would be developed further in the course of the archaeological salvage project and reporting.

4.4.3 Timing of Salvage Activities and Impacts

Collection of Aboriginal sites within the impact areas east of the Station Creek fence line will occur at the earliest opportunity, commencing with the initial pre-strip area from Integra 17 north to Integra 28.

On completion of artefact collections, impact activities within the initial open cut expansion area will commence.

Document Title:	Aboriginal Heritage Management Plan – Rixs Creek North		Document Owner:	John Hindmarsh
Prepared By:	John Hindmarsh	Print Date:	12-Feb-16	Version No: 6.0
Reviewed By:				Issue Date: 12/02/2016
Approved By:	Garry Bailey	Review Frequency:	36 MONTHS	Page No: 23 of 69

Test excavations will commence on completion of artefact collections. Because the test excavation areas are outside of the initial open cut activity area, test excavations may occur at the same time as initial mining-related activities.

Test excavations are estimated to take up to five days in each area, a total of up to three weeks.

Following test excavations, preliminary field data on artefact densities and archaeological characteristics will provide guidance as to the placement of open area hand excavations.

The two open area excavations will follow test excavations and will take approximately two weeks each, a total of four weeks (approximately). Mining activities are anticipated to occur concurrently outside of the salvage areas in areas where salvage collection has been completed.

The timeframe for analysis of stone artefacts recovered from the archaeological excavations will take up to 12 months from completion of fieldwork.

4.5 Aboriginal Keeping Place

Following completion of analyses and reporting Aboriginal heritage material recovered from collections and salvage excavations will be stored in a secure storage area at the Integra Coal Operations offices at Camberwell. When a more permanent Aboriginal Keeping Place is developed in the Upper Hunter Valley (as is currently proposed by Xstrata at Singleton) the artefacts will be permanently located there.

Access to the collections will be available to Aboriginal persons who demonstrate a valid cause for inspection – such as viewing for cultural, educational and research purposes. The collections will be kept at the Integra Offices and not removed or loaned until they are relocated to the proposed Singleton Keeping Place.

A register of persons requesting access to the material will be maintained with the collections.

4.6 Management of Displaced Artefacts in Topsoil Stockpiles

The process of open cut coal mining will result in total removal of original land surfaces, including removal of Aboriginal sites. Typical preparation for open cut mining includes removal and stockpiling of topsoil. In the event that Aboriginal objects are found to have been relocated to topsoil stockpiles, those Aboriginal objects on topsoil stockpiles will not be considered for further management, monitoring or salvage. Aboriginal objects in topsoil stockpiles will be returned to the land in the process of landscape rehabilitation after mining.

4.7 New Site Recording

In the event new Aboriginal sites are discovered during the course of archaeological surveys an AHIMS site card will be completed and submitted to DECCW in compliance with s.89A of the NPW Act 1974. The site cards will be lodged within 21 days and a copy provided to those registered Aboriginal stakeholder groups who wish to have a copy.

Artefacts are anticipated to occur within the topsoil throughout the areas of archaeological potential mapped in the EA. The existing mapping of Aboriginal sites and areas of potential in the EA is deemed sufficient notice to DECCW given that artefacts will be expected to occur as extensions to the known and reported sites. The extent of subsurface material related to known sites will be fully reported to DECCW within the salvage technical report.

In the event a new Aboriginal site is discovered within the mine impact area an AHIMS site card will be completed and submitted to DECCW in compliance with s.89A of the NPW Act 1974.

4.8 New Ground Impacts within the Project Approval Area

If new ground impacts occur within the western open cut extension area no Aboriginal site impact approval procedures or additional mitigation procedures are required. The Project Approval under Part 3A of the Environmental Planning and Assessment Act 1979 means that no AHIP is required for impact to Aboriginal objects. The collection and excavation program for Aboriginal sites and areas of archaeological potential detailed in this AHMPS is deemed sufficient mitigation of mining impacts and no further monitoring, recording or salvage is warranted. No monitoring of topsoil stripping is deemed appropriate due to the high safety risk. In the event new Aboriginal objects are identified on intact ground (not within displaced ground such as topsoil stockpiles), they will

Document Title:	Aboriginal Heritage Management Plan – Rixs Creek North		Document Owner:	John Hindmarsh	
Prepared By:	John Hindmarsh	Print Date:	12-Feb-16	Version No:	6.0
Reviewed By:				Issue Date:	12/02/2016
Approved By:	Garry Bailev	Review Frequency:	36 MONTHS	Page No:	24 of 69

be recorded in accordance with the procedure in **section 4.7** and collected and managed in accordance with **section 4.5**.

4.9 Human Remains

In the event that human remains (skeletal material) are discovered, the following procedure is to be followed:

1. when suspected human remains are exposed, all work is to cease immediately in the near vicinity of the find location;
2. an area of 10 m radius is to be cordoned off by temporary fencing around the exposed suspected human remains site - work can continue outside of this area as long as there is no risk of interference to the human remains or the assessment of human remains;
3. notify the Integra Coal Sustainability Manager immediately;
4. notify the Police at the earliest practicable time;
5. contact DECCW's Environment line on 131 555;
6. if the remains are Aboriginal remains, consult the Aboriginal stakeholders; and
7. do not recommence work at the location until all legal requirements and the reasonable requirements of DECCW and the Aboriginal stakeholders have been adequately addressed.

Where possible, Aboriginal stakeholders wish to be consulted over the selection of a physical anthropologist expert during the assessment of Aboriginal remains.

4.10 Aboriginal Cultural Heritage Awareness Induction

Integra incorporates Aboriginal Cultural Heritage Awareness in its induction procedure. It is compulsory for all new employees and contractors to undertake the induction. The induction will alert Integra personnel and contractors to the presence of Aboriginal sites within the project area so as to avoid unnecessary impacts.

4.11 Ground Impacts from Weed and Feral Animal Management

Measures to control weeds and feral animals will avoid ground impacts to fenced Aboriginal heritage sites west of Station Creek. Rabbit warrens at these locations will not be ripped.

4.12 Exemptions for Emergency Vegetation Management

Should an emergency situation arise requiring vegetation clearance (for example fire fighting) in the vicinity of protected Aboriginal heritage sites, this will be undertaken with the minimum possible disturbance to the topsoil.

4.13 Rubbish

All access to the land is short term by vehicle with all rubbish brought into the area by mine personnel or other authorised personnel removed by the same means. There are no on-site rubbish collection containers. The constraint on public access will serve as a control on the introduction of community rubbish. Locked gates and maintenance of perimeter fencing will control illegal dumping. Bins are provided at all established amenities locations.

4.14 Infrastructure Maintenance

Maintenance of tracks, fences, plant and equipment are anticipated to occur throughout the area west of Station Creek and the fence line immediately east of Station Creek during the course of mining. Such maintenance constitutes normal mining related activity and impacts to Aboriginal sites and objects are approved under the Part 3A Project Approval. Potential impact to Aboriginal objects and sites by maintenance activities will be managed by the installation of fences around these sites.

4.15 Livestock

No use of the land by livestock is envisaged. In the event livestock is introduced to the land, the area will be managed by fencing as appropriate.

Document Title:	Aboriginal Heritage Management Plan – Rixs Creek North		Document Owner:	John Hindmarsh	
Prepared By:	John Hindmarsh	Print Date:	12-Feb-16	Version No:	6.0
Reviewed By:				Issue Date:	12/02/2016
Approved By:	Garry Bailey	Review Frequency:	36 MONTHS	Page No:	25 of 69

5.0 Implementation

Certain management areas described above have specific tasks, responsibilities and timeframes as follows. Timing is subject to granting of Project Approval, and may be adjusted if Project Approval is not granted before December 2010.

Table 7 Implementation

Task	Section of AHMP	Responsibility	Timing
Completion of archaeological surveys	4.2	AECOM	Southwest visual bund area: prior to impacts – early 2011; Dulwich – if acquired and prior to mining impacts
Mapping of Aboriginal Sites on Integra GIS	4.3	Integra Project Manager	Completed
Fencing of non-impacted Aboriginal Sites	4.3	Integra Project Manager	December 2010
Arborist assessment of possible Aboriginal scarred tree sites Integra 33, Integra 38 and Integra 39	4.3	Arborist as designated by Environmental Advisor	2011
Collection of Impacted Aboriginal Sites	4.4.1	AECOM & Aboriginal Stakeholders	December 2010
Subsurface salvage program	4.4.2	AECOM & Aboriginal Stakeholders	December 2010 – 2011
Keeping place	4.5	Integra	2011
New site recording & reporting	4.7	Site recorder as designated by Environmental Advisor	Notification to DECCW at earliest opportunity and within 21 days
Human remains notification	4.9	All personnel	Notification immediately on discovery
Aboriginal cultural heritage awareness induction	4.10	Induction Company (currently Pegasus Training)	All inductions as currently presented, subject to comment on relevant sections by Aboriginal stakeholders

Appendix A

Aboriginal Sites

Appendix A Aboriginal Sites

AHIMS	Site Name	Site Type	MGA Easting	MGA Northing	Contents (#Artefacts 2007)	Significance	Management Action
37-3-856	Integra 1	Artefact Site	323675	6405935	4	Low	Fenced Protection
37-3-857	Integra 2	Isolated Find	322320	6405115	1	Low	Fenced Protection
37-3-858	Integra 3	Artefact Site	323291	6404986	25	Moderate	Collection
37-3-859	Integra 4	Isolated Find	323551	6404901	1	Low	Collection
37-3-860	Integra 5	Artefact Site	323697	6404827	2	Moderate	Collection
37-3-861	Integra 6	Isolated Find	323354	6405138	1	Low	Collection
37-3-862	Integra 7	Artefact Site	323641	6405021	2	Low	Collection
37-3-863	Integra 8	Artefact Site	323425	6404804	30	Moderate	Test Excavation (to be verified in field)
37-3-864	Integra 9	Artefact Site	323732	6405608	8	Low	Collection
37-3-865	Integra 10	Artefact Site	322696	6404640	9	Moderate	Collection
37-3-866	Integra 11	Artefact Site	322553	6404575	5	Moderate	Fenced Protection
37-3-867	Integra 12	Artefact Site	322512	6404455	11	Low	Collection
37-3-868	Integra 13	Artefact Site	322320	6404457	14	Moderate	Fenced Protection
37-3-869	Integra 14	Artefact Site	322260	6404541	9	Moderate	Fenced Protection
37-3-870	Integra 15	Artefact Site	322585	6404443	4	Moderate	Collection
37-3-871	Integra 16	Artefact Site	322980	6404176	2	Moderate	Test Excavation (to be verified in field)
37-3-872	Integra 17	Artefact Site	322949	6403898	180+	Moderate-High	Collection
37-3-873	Integra 18	Artefact Site	322871	6403226	2	Low	Collection
37-3-874	Integra 19	Isolated Find	322785	6402891	1	Low	Fenced Protection
37-3-875	Integra 20	Artefact Site	323015	6403037	8	Moderate	Fenced Protection
37-3-876	Integra 21	Artefact Site	322792	6403728	6	Low	Collection

AHIMS	Site Name	Site Type	MGA Easting	MGA Northing	Contents (#Artefacts 2007)	Significance	Management Action
37-3-877	Integra 22	Artefact Site	322570 ⁴	6404196	7	Low	Collection
37-3-878	Integra 23	Artefact Site	322777	6404213	6	Moderate	Collection
37-3-879	Integra 24	Isolated Find	322702	6404210 ⁵	1	Low	Collection
37-3-880	Integra 25	Artefact Site	323234	6404153	4	Low	Collection
37-3-881	Integra 26	Artefact Site	323224	6403975	5	Moderate	Collection
37-3-882	Integra 27	Isolated Find	323274	6404247	1	Low	Collection
37-3-883	Integra 28	Artefact Site	323329	6404347	4	Low	Collection
37-3-884	Integra 29	Artefact Site	322845	6404433	3	Low	Collection
37-3-885	Integra 30	Artefact Site	322869	6404645	6	Moderate	Collection
37-3-886	Integra 31	Artefact Site	323899	6405779	5	Low	Fenced Protection
37-3-887	Integra 32	Artefact Site	323687	6405827	3	Low	Collection
37-3-888	Integra 33	Possible Scarred Tree	322927	6405404	NA	High	Arborist assessment
37-3-889	Integra 34	Isolated Find	323415	6405137	1	Low	Collection
37-3-890	Integra 35	Isolated Find	323158	6404664	1	Low	Collection
37-3-891	Integra 36	Artefact Site	322819	6405379	3	Moderate	Fenced Protection
37-3-892	Integra 37	Isolated Find	322573	6405365	1	Moderate	Fenced Protection
37-3-893	Integra 38	Possible Scarred Tree	322947	6405382	NA	High	Arborist assessment
37-3-894	Integra 39	Possible Scarred Tree	322988	6405480	NA	High	Arborist assessment
37-3-895	Integra 40	Artefact Site	322207	6404862	2	Moderate	Fenced Protection
37-3-896	Integra 41	Artefact Site	323350	6404640	3	Low	Collection
37-3-897	Integra 42	Isolated Find	323538	6404569	1	Low	Collection
37-3-898	Integra 43	Artefact Site	323544	6404474	3	Low	Collection
37-3-899	Integra 44	Artefact Site	322981	6403553	2	Low	Collection
37-3-900	Integra 45	Isolated Find	323630	6404540	1	Low	Collection
37-3-901	Integra 46	Artefact Site	323022	6404140	50+	Moderate-High	Collection

⁴ The easting for 37-3-877 is altered here from the AHIM coordinate of 322520. AECOM's alteration is based on the actual site location as mapped in the EA report.

⁵ The northing for 37-3-879 is altered here from the AHIM coordinate of 6404100. AECOM's alteration is based on the actual site location as mapped in the EA report

Document Title:	Aboriginal Heritage Management Plan – Rixs Creek North			Document Owner:	John Hindmarsh
Prepared By:	John Hindmarsh	Print Date:	12-Feb-16	Version No:	6.0
Reviewed By:				Issue Date:	12/02/2016
Approved By:	Garry Bailey	Review Frequency:	36 MONTHS	Page No:	A-2 of 69

AHIMS	Site Name	Site Type	MGA Easting	MGA Northing	Contents (#Artefacts 2007)	Significance	Management Action
37-3-902	Integra 47	Artefact Site	323064	6403453	13	Moderate	Collection
37-3-562	SC1	Artefact Site	322806	6404710	1	Moderate	Test Excavation (to be verified in field)
37-3-563	SC2	Isolated Find	323146	6404930	0	Low	Collection
37-3-564; 37-3-903	SC3	Artefact Site	323156	6405020	3	Moderate	Fenced Protection
37-3-565	SC4	Artefact Site	323176	6405050	1	Moderate	Collection
37-3-566	SC5	Isolated Find	323153	6404950	0	Low	Fenced Protection
37-3-567; 37-3-904	SC6	Artefact Site	323626	6405190	1	Low	Collection
37-3-905; 37-3-568	SC8	Artefact Site	323866	6404910	2	Low	Collection
37-3-906; 37-3-569	SC9	Artefact Site	323756	6404600	0	Low	Collection
37-3-907; 37-3-570	SC10	Artefact Site	323736	6404490	0	Low	Collection
	SC11	Isolated Find	322980	6403380	0	Low	Collection
37-3-908; 37-3-572	SC12	Artefact Site	= Integra 47			Moderate	Collection
37-3-909; 37-3-573	SC13	Artefact Site	= Integra 47			Moderate	Collection
37-3-910; 37-3-574	SC14	Artefact Site	323206	6403350	12	Moderate	Collection
37-3-575	SC15	Artefact Site	323186	6402880	1	Low	Fenced Protection
37-3-576	SC16	Artefact Site	323176	6402850	0	Low	Fenced Protection
37-3-577	SC17	Artefact Site	323096	6402840	0	Low	Fenced Protection
37-3-578	SC18	Isolated Find	322636	6403420	0	Low	Fenced Protection
37-3-579; 37-3-911	SC19	Artefact Site	322626	6403480	2	Moderate	Collection
37-3-580; 37-3-912	SC20	Artefact Site	322586	6403910	0	Low	Collection
37-3-913	SC21	Artefact Site	= Integra 46			Moderate-High	Collection

Document Title:	Aboriginal Heritage Management Plan – Rixs Creek North			Document Owner:	John Hindmarsh		
Prepared By:	John Hindmarsh	Print Date:	12-Feb-16	Version No:	6.0		
Reviewed By:				Issue Date:	12/02/2016		
Approved By:	Garry Bailey	Review Frequency:	36 MONTHS	Page No:	A-3 of 69		

AHIMS	Site Name	Site Type	MGA Easting	MGA Northing	Contents (#Artefacts 2007)	Significance	Management Action
37-3-914	SC22	Artefact Site	= Integra 47			Moderate	Collection
37-3-915	SC23	Artefact Site	= Integra 46			Moderate-High	Collection
37-3-916	SC24	Artefact Site	323106	6403880	13	Moderate	Collection
37-3-917	SC25	Artefact Site	323114	6404110	2	High	Collection
37-3-918	SC26	Artefact Site	322860 ⁶	6404311	4	High	Fenced Protection
37-3-919	SC27	Artefact Site	= Integra 47			Moderate	Collection

⁶ The easting for 37-3-918 is altered here from the AHIMS coordinate of 323860. AECOM's alteration is based on the actual site location as mapped in the EA report. The AHIMS coordinate appears to be an AHIMS data entry error.

Document Title:	Aboriginal Heritage Management Plan – Rixs Creek North			Document Owner:	John Hindmarsh
Prepared By:	John Hindmarsh	Print Date:	12-Feb-16	Version No:	6.0
Reviewed By:				Issue Date:	12/02/2016
Approved By:	Garry Bailey	Review Frequency:	36 MONTHS	Page No:	A-4 of 69

Appendix B

Aboriginal Consultation Log

Date	Stakeholder Group	Stakeholder Representative	Correspondence/Comments	AECOM Representative
01/11/10	all		Letter advising of AECOM's role in preparing draft AHMO	Neville
03/11/10	all		Letter with Draft AHMP for review	Neville
10/11/10	Wanaruah LALC	Noel Downs	Message left for ND re Integra AHMP requesting Noel ring NB back	Neville
10/11/10	Ungooroo Abl Corp	Alan Paget	NB spoke to AP re draft AHMP - AP has skimmed it and commented on inappropriateness of previous consultants rake recovery method for artefacts - NB stated this had been removed completely and a proper archaeological method included	Neville
10/11/10	Ungooroo Clt & Comm Svcs	Rhonda Ward	NB Spoke to RW - RW has received draft AHMP but no comment as yet - will deal with it on day of meeting	Neville
10/11/10	Gidawaa Walang/Barkuma	Ann Hickey	NB spoke to AH - AH rec'd draft AHMP last Friday - happy with the addl detail over the Appleton draft - wasn't happy with the Appleton draft and had rung other stakeholders to check their views - will send letter - OK for Thursday 18/11 Meeting	Neville
10/11/10	Wattaka	Des Hickey	NB spoke to DH - touched base re AHMP - need to ring back due to limited time	Neville
10/11/10	UHWC	Rhoda Perry	NB spoke to RP - Tracey Skene now has a job and her sister now represents UHWC - has the AHMP and will send Georginba to the meeting on 18/11 - generally positive about the AHMP	Neville
10/11/10	Hunter Valley Native Title Cons	Margaret Matthews	NB spoke to MM - MM has rec'd AHMP draft and can make a meeting 18/11 - NB said feedback very welcome on draft plan	Neville
10/11/10	Giwirr	Rodney Matthews	NB spoke to RM - RM has rec'd AHMP draft and can make a meeting 18/11 - NB said feedback very welcome on draft plan	Neville
11/11/10	Yarrowalk	Scott Franks	NB spoke to SF - SF has rec'd AHMP draft and can make a meeting 18/11 - NB said feedback very welcome on draft plan	Neville
11/11/10	Wonnarua Custodians	Barbara Foot	NB spoke to BF - BF says she has not received draft AHMP and may not make a meeting 18/11 - NB said another copy of draft AHMP will be sent and we'll continue to consult with her.	Neville

Date	Stakeholder Group	Stakeholder Representative	Correspondence/Comments	AECOM Representative
11/11/10	Wanaruah LALC	Suzie Worth	NB spoke to SW - SW works casually for WLALC but Noel Downs usually gets her to attend meetings; hasn't seen AHMP and letters because she hasn't been in to the Land Council office - will attend office on 12/11 and may see it then. Noel usually gives reports, etc to SW for review.	Neville
11/11/10	Wanaruah LALC	Noel Downs	NB spoke to ND re AHMP draft and meeting. ND hopes to attend with Suzie Worth. Can't recall AHMP document but sees a lot of these - NB alerted ND to email with attached AHMP draft	Neville
11/11/10	Wanaruah LALC	Noel Downs	NB emailed Noel Downs with meeting details and attached draft AHMP document	Neville
11/11/10	Wanaruah LALC	Noel Downs	NB faxed Noel Downs with meeting details	Neville
11/11/10	Yarrowalk	Scott Franks	NB emailed details of meeting on 18/11 to Scott Franks	Neville
11/11/10	Nur run Gee	Len Anderson	NB left message on LA's phone re AHMP consultation	Neville
11/11/10	Nur run Gee	Len Anderson	NB emailed LA with details of 18/11 meeting	Neville
11/11/10	Nur run Gee	Len Anderson	NB spoke to LA - LA won't work outside of Worimi area and therefore will not attend meeting of 18/11 or fieldwork, but is interested in correspondence	Neville
11/11/10	Wonnarua Cultural heritage	Gordon Griffiths	NB tried phone number - disconnected	Neville
11/11/10	Upper Hunter Heritage Consultants	Darrel Matthews	NB tried phone number - disconnected; NB tried Mobile number and left a message re AHMP and 18/11 meeting	Neville
11/11/10	Ungooroo Abl Corp	Alan Paget	NB spoke to AP confirming meeting 18/11 10 am at Integra Open Cut office; AP will attend	Neville
11/11/10	Ungooroo Clt & Comm Svcs	Rhonda Ward	NB spoke to RW confirming meeting 18/11 10 am at Integra Open Cut office; RW will attend	Neville
11/11/10	Wattaka	Des Hickey	NB spoke to DH confirming meeting 18/11 10 am at Integra Open Cut office; DH will attend; DH didn't receive letters last week - send AHMP again via email	Neville
11/11/10	Gidawaa Walang/Barkuma	Ann Hickey	NB left message with reception for AH with details of next week's meeting	Neville

Date	Stakeholder Group	Stakeholder Representative	Correspondence/Comments	AECOM Representative
11/11/10	UHCW	Rhoda Perry	NB spoke to RP confirming meeting 18/11 10 am at Integra Open Cut office;	Neville
11/11/10	All stakeholders		letter sent with details of meeting 18/11 10am at Integra Open Cut to discuss draft AHMP + payment rates & invoicing details to R.W.Corkery	Neville
18/11/10	All stakeholders		Aboriginal Consultation Meeting held at Integra Open Cut - ran through powerpoint presentation and discussed draft AHMP content	Neville
19/11/10		John Matthews	JM called to ask about invoicing and registration of stakeholders; NB said existing registered stakeholders were invited to meeting and could invoice	Neville
19/11/10	Gidawaa Walang/Barkuma	Ann Hickey	phoned - sending comments on draft 1B AHMP by email and fax	Neville
19/11/10	All stakeholders		revised draft AHMP posted out requesting comments back from the end of November	Neville
29/11/10	Gidawaa Walang/Barkuma	Ann Hickey	Advised that they were happy with the revised AHMP	Luke
01/12/10	(Wannaruah LALC)	Suzie Worth	RC called. Will attempt to provide a response by the end of the week.	Rochelle
01/12/10	(Ungooroo Aboriginal Corporation)	Allen Paget	RC called. Allen was out of the office. Receptionist Tasha to pass on message.	Rochelle
01/12/10	(Ungooroo Cultural and Community Services)	Rhonda Ward	RC called. Will call back sometime this week to give comments.	Rochelle
01/12/10	(Upper Hunter Wannaruah Council)	Rhoda Perry	RC called. Rhoda reiterated that consultation must involve all registered stakeholders. Rhoda stated that she looked forward to working with us. Luke Kirkwood to discuss Rhoda's concerns further.	Rochelle
01/12/10	(Wannaruah Custodians)	David Foot	RC called. David stated that he had not received any management plan and so could not comment on it.	Rochelle
01/12/10	(Wattaka Wannaruah Traditional Owner)	Des Hickey	RC called. Des stated that he had not received anything. Confirmed address was the same as in the log.	Rochelle
01/12/10	Giwirr	Rodney Matthews	SL called. Number is actually Michelle, his wife. She will fax through comments today.	Susan

Date	Stakeholder Group	Stakeholder Representative	Correspondence/Comments	AECOM Representative
01/12/10	Aboriginal Native Title Elders Consultants	Margaret Matthews	SL called. No answer.	Susan
01/12/10	Upper Hunter Heritage Consultants	Darrel Matthews	SL called. Left message asking for comments today	Susan
01/12/10	Yarrawalk	Scott Franks	SL called. Left message. Scott called back immediately, but his phone kept cutting out. His comment was that 28 days had not expired. Explained that consultation timeframes were in relation to cultural heritage assessment reports which had already been conducted for the Integra Open Cut Mine and that the methodology had not significantly changed from the original draft document sent 3/11/10. He provided some comments on the phone, but was going to email through some more. His concerns included that there was not enough time to review the methodology. That the area backed on to a Native Title claim that he was party to and that the revised AHMP did not address three of the issues he raised at the meeting on the 18/11. These were that TOs participate in fieldwork from start to finish, not on a rostered basis; that the fencing work be tendered back to the TOs and that Neville had committed to meeting with the Native Title Claimants regarding the project and had not. Luke Kirkwood to contact Scott.	Susan
01/12/10	Nur-run-gee	Len Anderson	SL called. Left message asking for comments today or tomorrow at the latest. Len called back and said thank you for the invite but as the site was outside their area they would not be providing comments	Susan
01/12/10	Wonnarua Culture Heritage	Gordon Griffiths	Number disconnected. Did Whitepages search, but couldn't find a relevant number.	Susan
01/12/10	Yarrawalk	Scott Franks	Email with comments received from Scott. Still has concerns in regard to the 2010 DECCW Consultation Guideline (re 28 day time frame), as he believes that the document sent to him makes reference to it. (Scott	Susan

Date	Stakeholder Group	Stakeholder Representative	Correspondence/Comments	AECOM Representative
			<p>references section 3.3.1. However, there is no reference to a 28 day time frame in section 3.3.1 in the final document) He would like to be able to confirm a commitment from the proponent regarding fencing off sites and that Yarrawalk be engaged to do that work. He wants the Native Title Claimant group members to be engaged every day of the survey, not on a roster program. He wants the consultant to meet with and explain the project to the Native Title Claimant group. Scott wants to be "given the opportunity to look at other opportunities" to work on the project. Until he has confirmation of the above, Scott states that he could not support the project going ahead as it is next to an area where he holds Native Title rights. Luke Kirkwood to contact Scott to discuss these issues further prior to fieldwork engagement.</p>	



Environmental Management System

Rixs Creek North – Rix's Creek Pty Limited

Part B

Stage 2 Non-Aboriginal Heritage Management Plan – Rixs Creek North

Doc No: - Stage 2 Non-Aboriginal Heritage Management Plan – Rixs Creek North

Doc Owner: Senior Environmental Officer – Rixs Creek Pty Ltd.

Approval: Senior Environmental Officer
Rix's Creek Pty Ltd

Signed: John Hindmarsh

12/02/2016

Date:

Revision	Issue Date	Originator	Reviewed	Approved
Draft	18/8/2011	T. Adams (Umwelt)	C. Ellis	
Final	11/10/2012	K. Brickhill	J. Trotter	
Update	5/1/2016	John Hindmarsh		Garry Bailey
Update Ver 3.1	12/2/2016	John Hindmarsh		Garry Bailey

Table of Contents

1.	Introduction	11
2.	Background	B
2.1	Rixs Creek North	B
2.2	Purpose and Scope	B
2.3	Regulatory Requirements	B
2.4	Environmental Management System Framework	C
3.	Historical Context and Evaluation of Archaeological Potential	E
3.1	Introduction	E
3.2	Evaluation of Archaeological Potential	E
3.2.1	Identified Historical Archaeological and Heritage Resource - Open Cut Project	E
3.2.2	Previously Identified Zones of Archaeological Potential	H
3.3	Proposed Works	H
3.3.1	Rixs Creek North – former Integra Open Cut Project	H
3.4	Potential Impacts	I
3.4.1	Open Cut Project	I
4.	Stage 2 Non-Aboriginal Heritage Management Plan Requirements	B
4.1	Department of Planning & Infrastructure Consultant Endorsement	B
4.2	Consultation	B
4.3	Further Archaeological/Historical Investigation	B
4.4	James Halliday Glennie Grave Site	D
4.5	Dulwich Property	D
4.5.1	Conservation Management Plan	D
4.5.1	Archival Recording	E
4.6	Program/Procedures for photographic and archival recording	E
4.6.1	Onsite Digital Archival Photographic Recording	E
4.6.2	Photographic Archival Record	E
4.7	Conserving, Managing, Monitoring, Relocating Archaeological Remains	F
4.8	Interpretation	G
4.9	General Management Strategies	G
4.9.1	Mapping of Heritage Sites	G
4.9.2	Provision of NAHMP	G
4.9.3	Heritage Inductions	G
4.9.4	Management of Discovery of New Non-Aboriginal Objects	H
4.9.5	Management of Skeletal Remains	H
4.9.6	Archaeological Reporting	I
4.9.7	Further Assessment	I
5.	Roles and Responsibilities	J
6.	Review	K
7.	References and Associated Documentation	K
8.	Glossary	L
9.	Appendices	M
9.1	Appendix 1 - Excerpt from Project Approval	M
9.2	Appendix 2 – Archaeological Research and Investigation—Integra Coal Archaeological Investigation Area	

Figures

1.1	Location Plan	4
1.2	Integra Mine Complex	4
1.3	Department of Planning & Infrastructure Archaeological Investigation Area	4
1.4	Proposed Erosion and Sediment Control Measures	4
3.2	Detail of Integra Open Cut Project Area Showing Location of Identified and Additional Archaeological Sites	11
3.3	Zones of Archaeological Potential	13
3.4	Detail of Location of Proposed Contour Drain CWD1	14

Document Title:	Stage 2 Non-Aboriginal Heritage Management Plan – Rixs Creek North			Document Owner:	John Hindmarsh
Prepared By:	John Hindmarsh	Print Date:	12-Feb-16	Version No:	3.0
Reviewed By:			36 MONTHS	Issue Date:	12/2/2016
Approved By:	Garry Bailey	Review Frequency:		Page No:	10 of 69

1. Introduction

This Stage 2 Non-Aboriginal Heritage Management Plan – Rixs Creek North (Stage 2 NAHMP) forms part of a series of Environmental Management Plans at Rixs Creek North. The plans address environmental issues requiring management as determined through internal risk management processes or prescribed by relevant authorities.

This Stage 2 NAHMP outlines the actions required and persons responsible in order for Integra Coal to effectively manage Non-Aboriginal (Historical) heritage and archaeology, through implementation of audits and reviews, to establish a process for continual improvement of environmental performance. It has been prepared to address Conditions 46 and 47 of Schedule 3 of the Project Approval (refer to **Section 2.3**).

Rixs Creek North is located approximately 10 kilometres north-west of Singleton, NSW (refer to **Figures 1.1** and **1.2**).

The Department of Planning & Environment (DPE) established an archaeological investigation area across the northern part of the Open Cut Project Area as part of their project approval conditions (refer to **Section 2.3** and **Figure 1.3**).

A staged submission of the NAHMP was requested and approved by DPE as a result of the need to undertake essential water management works across the southern boundary of the archaeological investigation area (refer to **Figure 1.4**). As such the NAHMP comprises the following stages:

- Stage 1 Non-Aboriginal Heritage Management Plan (NAMHP)_West Extension Environmental & Water Management Works is specific to the proposed environmental and water management works located across the southern boundary of the archaeological investigation area within the open cut project area. The Stage 1 NAMHP was approved by DPE on 4 August 2011.
- Stage 2 NAMHP (this report) comprises the final NAHMP addressing all requirements for both the open cut and underground projects (refer to **Section 2.3**), which is required to be completed and submitted to the DPE by 31 August 2011.

Document Title:	Stage 2 Non-Aboriginal Heritage Management Plan – Rixs Creek North			Document Owner:	John Hindmarsh
Prepared By:	John Hindmarsh	Print Date:	12-Feb-16	Version No:	3.0
Reviewed By:				Issue Date:	12/2/2016
Approved By:	Garry Bailey	Review Frequency:	36 MONTHS	Page No:	11 of 69

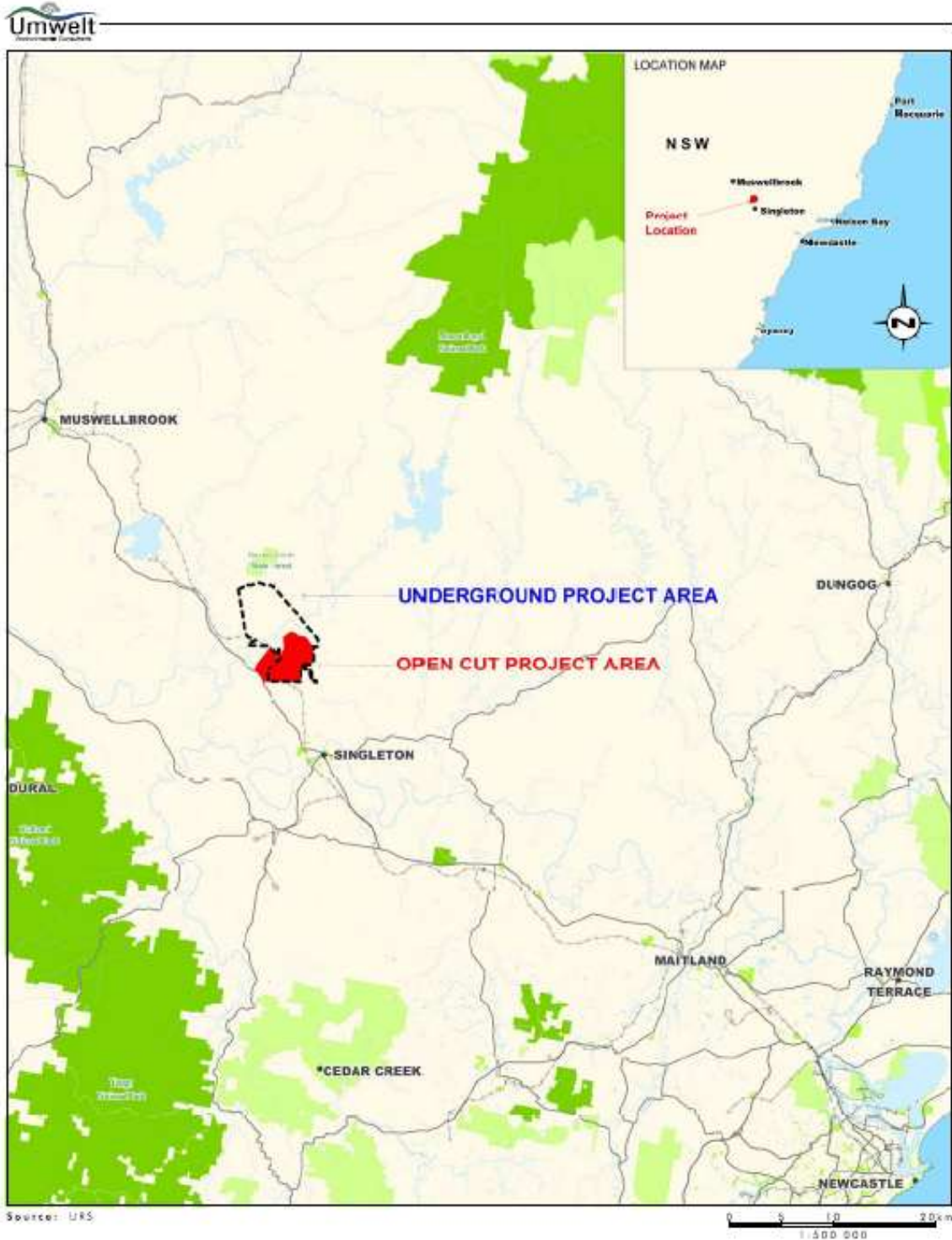


FIGURE 1.1
Location Plan

Document Title:	Stage 2 Non-Aboriginal Heritage Management Plan – Rixs Creek North		Document Owner:	John Hindmarsh	
Prepared By:	John Hindmarsh	Print Date:	12-Feb-16	Version No:	3.0
Reviewed By:				Issue Date:	12/2/2016
Approved By:	Garry Bailey	Review Frequency:	36 MONTHS	Page No:	12 of 69

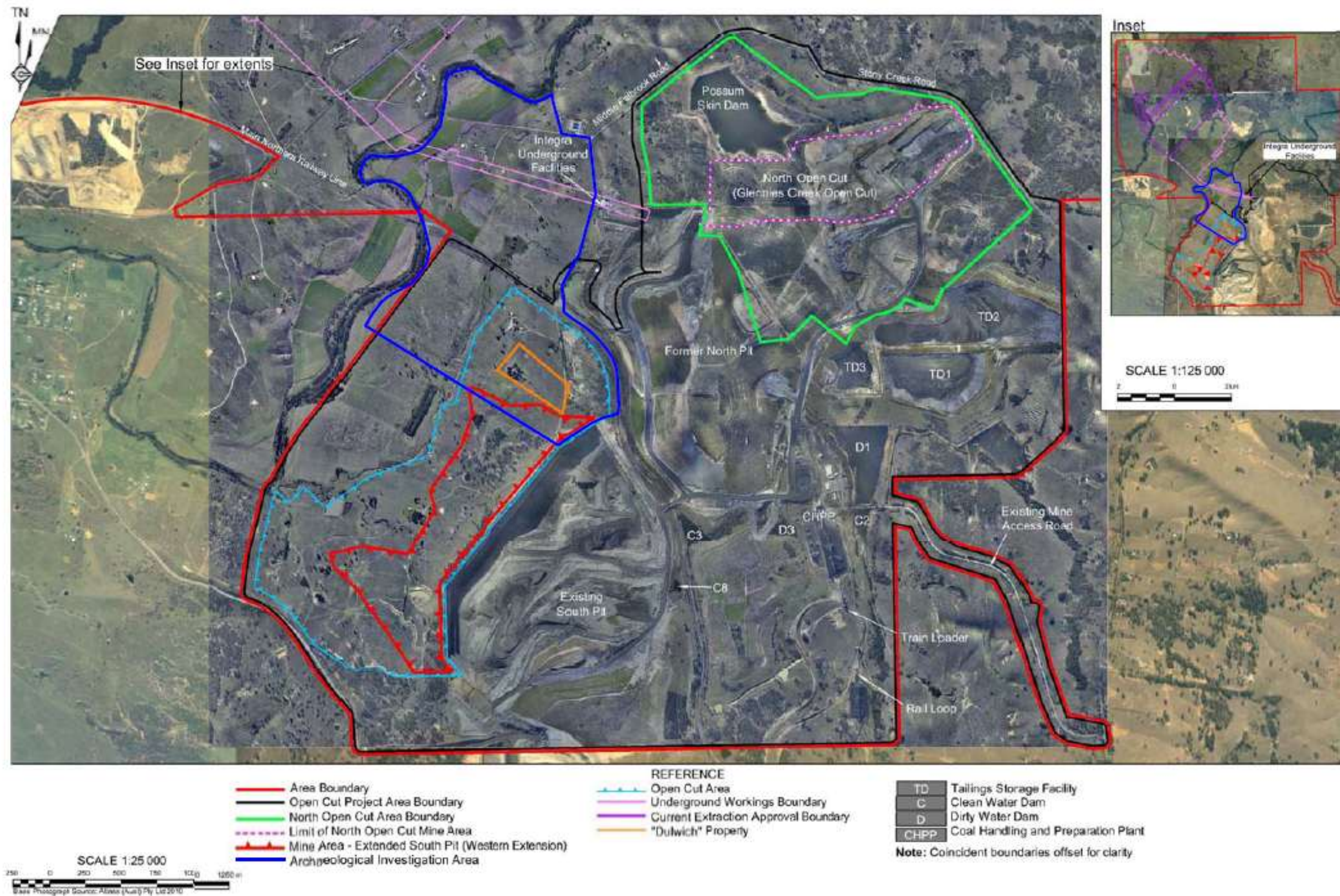


FIGURE 1.2

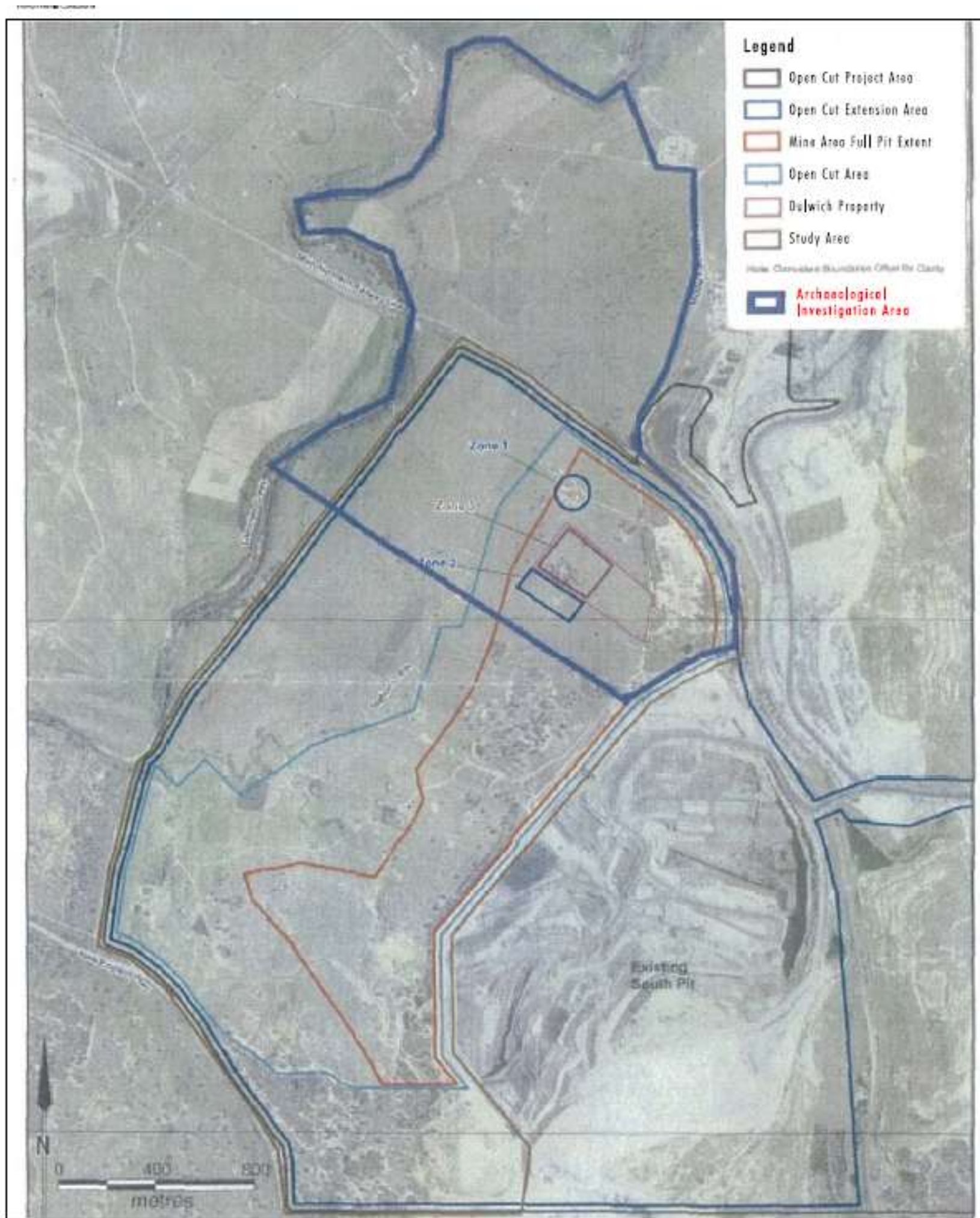
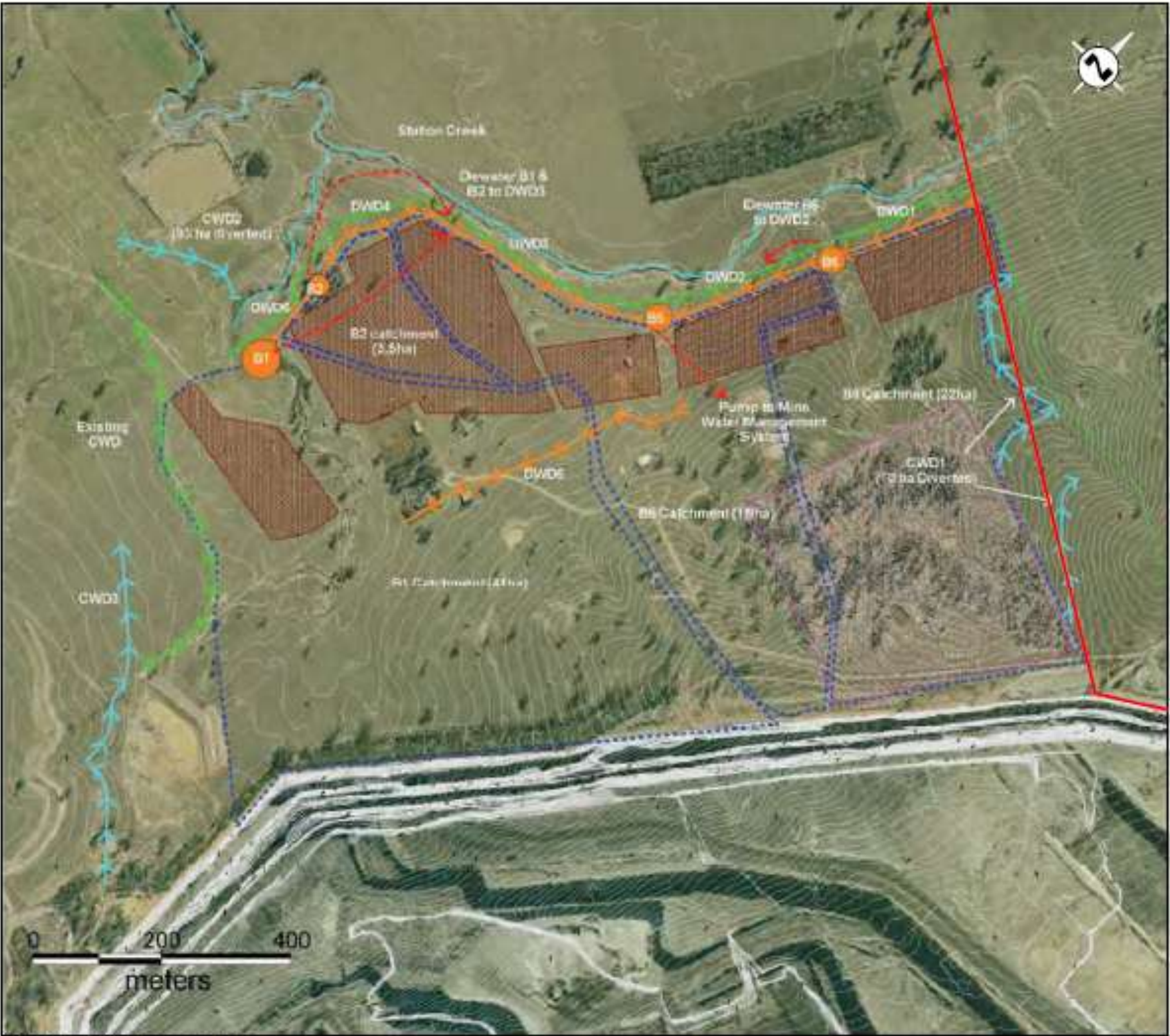


FIGURE 1.3
Department of Planning & Infrastructure
Archaeological Investigation Area



Source: G55 Environmental

Legend

- Archaeological Investigation Area
- Soil Stockpile
- Historic Soil Stockpile (to be removed)
- Dirty Water Dam
- Dirty Water Diversion
- Clean Water Diversion
- Existing Clean Water Diversion
- Natural Drainage Line
- Sediment Fence
- Catchment Boundaries
- Fence Line
- Pumping to Mine Water System
- 1m Contour

FIGURE 1.4
 Proposed Erosion and
 Sediment Control Measures

File Name (A4): R03/2955_047.dgn
 20110822 11:40

2. Background

2.1 Rixs Creek North

Glencore and Bloomfield's purchase of the Integra Operations Complex was completed on the 18th December 2015. Subsequent to the purchase Bloomfield have ownership of the Open Cut operations and surface infrastructure including CHPP and Train loader and HV Coking Coal Pty Limited (a subsidiary of Glencore Coal Pty Ltd) have ownership of the Underground operations.

The Integra Open Cut operation will be operated and managed by Bloomfield as Rixs Creek North, an integrated part of the existing Rixs Creek Mine.

Prior to the purchase the open cut operation was in care and maintenance with no mining operations were taking place on the site. Bloomfield has submitted, to the Department of Resources and Energy, Mining Operation Plans (MOP) that would allow for a maximum yearly production of 1 million saleable tonnes from the open cut mine operation. This production will be in the western extension to the South Pit. The North Open Cut will be utilized for temporary water storage. Production will utilise the existing Integra open cut machinery with Rixs Creek employing up to 70 additional employees to achieve these production targets.

Integra Coal Operations Pty Ltd was granted Project Approval under Section 75J of the Environmental Planning and Assessment Act 1979 by the Minister for Planning on 26 November 2010 for Project 08_0101 Integra Underground Project and Project 08_0102 Integra Open Cut Project (collectively the Integra Mine Complex). These approvals consolidate and expand upon the following pre-existing approvals:

- Glennies Creek Colliery (105/90)
- Camberwell Coal Project (86/2889)
- Glennies Creek Colliery Surface Facilities (06_0057)
- Glennies Creek Underground Coal Project (06_0213)
- Glennies Creek Open Cut Coal Project (06_0073)

Project Approval Conditions 2 and 3 (of Schedule 2) require both the Open Cut and the Underground operations be carried out in general accordance with previous and current Environmental Assessments.

The Rixs Creek North includes:

- The North Pit and South Pit).
- Extended South Pit. The approved extension (named Western Extension hereafter) incorporates the Dulwich property and lands to the south of the main northern railway line. However, at present, mining will be restricted to the Mine Area depicted on **Figure 1.2** as Rixs Creek North do not own the Dulwich property.

Document Title:	Stage 2 Non-Aboriginal Heritage Management Plan – Rixs Creek North			Document Owner:	John Hindmarsh
Prepared By:	John Hindmarsh	Print Date:	12-Feb-16	Version No:	3.1
Reviewed By:				Issue Date:	12/02/2016
Approved By:	Garry Bailey	Review Frequency:	36 MONTHS	Page No:	B of 69



- Legend**
- Open Cut Project Area Boundary
 - Limit of North Open Cut Mine Area
 - Mine Area - Extended South Pit (western extension)
 - Archaeological Investigation Area
 - Open Cut Area
 - Dulwich Property Boundary
 - Approximate Location of 1830's Track
 - Potential Location of 1820's Structure
 - Approximate Location of 1830's Structure
 - Potential Artefact Deposit
 - Blocksmiths Site
 - House Site

FIGURE 3.2

Detail of Integra Open Cut Project Area
Showing Location of Identified and
Additional Potential Archaeological Sites

File Name (A4): R03/2955_04B.dwg

Document Title:	Stage 2 Non-Aboriginal Heritage Management Plan – Rixs Creek North		Document Owner:	John Hindmarsh	
Prepared By:	John Hindmarsh	Print Date:	12-Feb-16	Version No:	3.1
Reviewed By:				Issue Date:	12/02/2016
Approved By:	Garry Bailey	Review Frequency:	36 MONTHS	Page No:	B of 69

-
- The North Open Cut (formerly the Glennies Creek Open Cut).

2.2 Purpose and Scope

This NAHMP addresses the historical heritage and archaeological management issues associated with the Integra open cut and underground projects. It does not include a detailed heritage management strategy with regards to Aboriginal cultural heritage. The Aboriginal heritage component of the series of Environmental Management Plans at Integra Coal (the Aboriginal Heritage Management Plan), also required in accordance with Project Approval Condition 47 of Schedule 3, has been submitted as a staged submission and has already been approved by DPE.

As discussed in **Section 1.0**, the Stage 1 NAHMP has been submitted and approved by DP&E and should be referred to regarding environmental and water management works along the southern boundary of the archaeological investigation area.

This report has also been prepared with regards to the principles contained in *The Burra Charter: The Australia ICOMOS Charter for Places of Cultural Significance 1999* (Australia ICOMOS 2000). It also draws on information provided by the Heritage Branch, Office of Environment & Heritage (OEH) on the preparation of Conservation Management Plans (CMPs) and Conservation Management Strategies (CMSs) and *Conservation Plan A Guide to the Preparation of Conservation Plans for Places of European Cultural Significance* (Kerr 2006).

2.3 Regulatory Requirements

The requirement for this NAHMP arises from Conditions 46 and 47 of Schedule 3 of the Integra Coal Operations Pty Ltd Project Approval. This report has been prepared to address these Conditions.

A full list of the project approval conditions relating to Non-Aboriginal heritage and archaeology and where they are addressed within this document is provided in **Table 2.1**.

Table 2.1 – Project Approval Conditions

HERITAGE	Relevant Section of this Document
Further Archaeological Investigation	
46 Prior to carrying out any development in the parts of the site outlined in purple on the figure in Appendix 8, unless the Director-General agrees otherwise, the Proponent shall carry out further archaeological testing and investigation within the broader area outlined in purple on the figure in Appendix 8 to the satisfaction of the Director-General	3.1 3.2 4.3
Heritage Management Plan	
47 The Proponent shall prepare and implement a Heritage Management Plan for the projects to the satisfaction of the Director-General. The plan must: <ul style="list-style-type: none"> a) Be prepared by suitably qualified and experienced persons whose appointment has been endorsed by the Director-General 	4.1

Document Title:	Stage 2 Non-Aboriginal Heritage Management Plan – Rixs Creek North			Document Owner:	John Hindmarsh
Prepared By:	John Hindmarsh	Print Date:	12-Feb-16	Version No:	3.1
Reviewed By:				Issue Date:	12/02/2016
Approved By:	Garry Bailey	Review Frequency:	36 MONTHS	Page No:	B of 69

b) be prepared in consultation with DECCW, the Aboriginal community, the Heritage Branch, Council, local historical organisations and any relevant landowners	4.2
c) be submitted to the Director-General for approval by the end of March 2011*	1.0
e) include programs/procedures for the following, in accordance with the applicable guidelines of the Heritage Branch: Further historical investigation of the area outlined in purple on the Figure in Appendix 8 to identify the potential archaeological resources within the area	3.1 3.2 4.3
• Archaeological testing of the potential archaeological resources within the area outlined in purple on the figure in Appendix 8	4.3
• Further archaeological investigation of any areas where the archaeological testing identifies significant archaeological deposits	4.3
• Archaeological excavation of the known grave on site, identified as the James Halliday Glennie grave site	4.4
• Detailed archival recording of the Dulwich property if it is to be mined, or the preparation of a detailed conservation management plan for the Dulwich property if it is not to be mined (subject to the agreement of the landowner)	4.5
• Archival recording of any other heritage items to be destroyed by the project	4.6
• Conserving, managing, monitoring, and where appropriate, relocating any non-Aboriginal sites, objects and deposits on site	4.7
• Interpreting the findings of the additional heritage or archaeological investigations carried out on the site	4.8
• Managing the discovery of any new non-Aboriginal objects or skeletal remains identified during the projects.	4.9.4 4.9.5

* an extension of the due date was granted until the 31st August 2011.

2.4 Environmental Management System Framework

This Stage 2 NAHMP forms part of the overall Environmental Management System for Rixs Creek North. This System has been developed to separate the environmental management of the open cut operation from the underground operation from what was the former Integra Mine Complex. The System addresses environmental issues requiring management as determined by the relevant authorities following any approvals and internal risk management processes.

Table 2.2 details the approved Plans to date that provide the management, mitigation and monitoring of environmental issues.

Table 2.2 – Rixs Creek North Management Plans

Approval Authority	Approval Date	Title
Dept. Planning & Environment	Submitted January 2016	Noise Management Plan
Dept. planning & Environment	Submitted January 2016	Blast Management Plan
Detp. Planning & Environment	Submitted January 2016	Air Quality & Greenhouse Gas Management Plan

Document Title:	Stage 2 Non-Aboriginal Heritage Management Plan – Rixs Creek North		Document Owner:	John Hindmarsh
Prepared By:	John Hindmarsh	Print Date:	12-Feb-16	Version No: 3.1
Reviewed By:		Review Frequency:	36 MONTHS	Issue Date: 12/02/2016
Approved By:	Garry Bailey			Page No: C of 69

Dept. Planning & Environment	Submitted January 2016	Water Management Plan
Planning & Infrastructure	Required by end of December 2011	Biodiversity Management Plan
Dept. Planning & Environment	Staged approval for Aboriginal Heritage 23 /12/10.	Aboriginal Heritage Management Plan
Dept. Planning & Environment	Staged 2 Non-Aboriginal Heritage Management Plan Submitted February 2016	Non-Aboriginal Heritage Management Plan
Dept. Planning & Environment	Submitted January 2016	Waste Management Plan
Dept. Industry – Resource and Energy	Submitted December 2015	Mining Operations Plan replacing Rehabilitation Management

Until they are replaced by an approved equivalent strategy, plan or program (refer to **Table 2.2**) Rix's Creek Pty Ltd will continue to implement the existing strategies, plans or programs for the development on site in accordance with the Project Approval and Environmental Assessment commitments for the Integra Underground and Open Cut Projects (ERM 2009a and URS 2009).

Document Title:	Stage 2 Non-Aboriginal Heritage Management Plan – Rixs Creek North		Document Owner:	John Hindmarsh
Prepared By:	John Hindmarsh	Print Date:	12-Feb-16	Version No: 3.1
Reviewed By:				Issue Date: 12/02/2016
Approved By:	Garry Bailey	Review Frequency:	36 MONTHS	Page No: D of 69

3. Historical Context and Evaluation of Archaeological Potential

3.1 Introduction

As part of NSW heritage assessment procedures it is essential to have a full understanding of a site or item based on its historical and physical context. In accordance with Conditions 46 and 47 (e) of Schedule 3 of Project Approval 08_0101 and 08_0102 further historical research and investigation has been undertaken in the area outlined in purple (archaeological investigation area) on the figure in Appendix 8 (reproduced as **Figure 1.3** in this document) of the approval conditions to build on and supplement the historical context prepared as part of the *Assessment of Historical Archaeology: Integra Open Cut Project, Singleton*. NSW (Nexus 2008) and *Integra Underground Coal Project Heritage Assessment* (ERM 2009b). Research focused initially on determining (where possible) the locations of the potential archaeological resource identified in the 2008 Nexus report and whether any additional potential archaeological resource could be located within the archaeological investigation area, including in the area of the proposed contour drain. The research and investigation undertaken includes but is not limited to:

- A full land title search of the archaeological investigation area.
- Research in State Records Authority of New South Wales.
- Research in Local Studies Section and the Information & Research Section of the Newcastle Regional Library.
- Overlaying early surveyors plans (including Robert Dixon and GB White) with current project plans utilising common cadastral and topographical information (primarily Glennies Creek).
- Ground truthing of the results of the research across the archaeological investigation area

The historical context of the Rixs Creek North project area, including the archaeological investigation area, is documented in *Archaeological Research and Investigation—Integra Coal Archaeological Investigation Area* (Umwelt 2011) submitted to DPE on 21 July 2011. The Archaeological Research and Investigation report also documents the results of the further research and investigation (including ground truthing) undertaken in accordance with Conditions 46 and 47 (e) of Schedule 3 of Project Approval. The Archaeological Research and Investigation report is attached to this NAHMP as **Appendix 2**.

3.2 Evaluation of Archaeological Potential

The *Archaeological Research and Investigation—Integra Coal Archaeological Investigation Area* (Umwelt 2011) includes an evaluation of the archaeological potential of the Integra Coal Operations project area (refer to **Appendix 2**). This section summarises the identified historical archaeological and heritage resource the Open Cut Projects.

3.2.1 Identified Historical Archaeological and Heritage Resource - Open Cut Project

A summary of the potential archaeological sites identified in the *Assessment of Historical Archaeology: Integra Open Cut Project, Singleton*. NSW (Nexus 2008) is presented in **Table 3.1** and shown on **Figure 3.1**. **Table 3.1** and **Figure 3.1** are taken primarily from the Nexus 2008 assessment (Nexus 2008:47-48) however the information has been updated to reflect the results of the further research and investigation (including ground truthing) documented in the Archaeological Research and Investigation report attached to this NAHMP as **Appendix 2**. The likelihood of impacts as a result of the proposed works are also included. The potential impacts are further discussed in **Section 3.4**.

Table 3.1 Summary of Potential Archaeological and Heritage Resource – Open Cut Project Area

Site	Location	Potential Archaeological Resource	Potential Impacts
------	----------	-----------------------------------	-------------------

Document Title:	Stage 2 Non-Aboriginal Heritage Management Plan – Rixs Creek North			Document Owner:	John Hindmarsh
Prepared By:	John Hindmarsh	Print Date:	12-Feb-16	Version No:	3.1
Reviewed By:				Issue Date:	12/02/2016
Approved By:	Garry Bailey	Review Frequency:	36 MONTHS	Page No:	E of 69

Area of first phase Dulwich Homestead site/Glennie's Slab Hut and convict quarters (1820s)	Potentially located to south of Nobles Lane within archaeological investigation area (refer to Figure 3.2)	Footings (including timber footings) and sub-surface structural remains (including postholes and other features cut into ground surface), household and personal artefacts	Nil – outside (to north of) mine area (refer to Figure 3.1).
Second phase Dulwich Homestead site/Glennie House site and convict quarters (1830s)	Likely in same location, or immediately to south, of present Dulwich property (refer to Figure 3.2)	Footings and sub-surface structural remains (including postholes and other features cut into ground surface), household and personal artefacts, formal garden (although typically ephemeral and sensitive to later disturbance)	Potential impacts from installation of tree screen (refer to Section 3.4)
Possible tracks/roads and Glennie Creek crossing (1824 to 1880s)	Located within archaeological investigation area (refer to Figure 3.2)	Early tracks are typically ephemeral and sensitive to later disturbance. Potential landform indicators and evidence of drainage	Nil – outside (to north of) mine area (refer to Figure 3.1).
Farm outbuildings (1824 to 1880s)	Likely located within archaeological investigation area.	Stables, yards, shearing shed, dairy, blacksmith, meat house. Footings and sub-surface structural remains (including postholes and other features cut into ground surface), household and personal artefacts	Potential impacts from installation of tree screen (refer to Section 3.4)
Grave sites of James Halliday Glennie and Charles Bates (1830 to 1850)	James Halliday Glennie grave site known = outside area of works. Charles Bates site = unknown location	Burial materials and skeletal remains	Nil – no archaeological potential in mine area (refer to Figure 3.1).

Document Title:	Stage 2 Non-Aboriginal Heritage Management Plan – Rixs Creek North			Document Owner:	John Hindmarsh
Prepared By:	John Hindmarsh	Print Date:	12-Feb-16	Version No:	3.1
Reviewed By:				Issue Date:	12/02/2016
Approved By:	Garry Bailey	Review Frequency:	36 MONTHS	Page No:	F of 69

Table 3.1 Summary of Potential Archaeological and Heritage Resource – Open Cut Project Area (cont)

Site	Location	Potential Archaeological Resource	Potential Impacts
Alcorn's Inn (also called Greyhound Inn and Queen Victoria) (1830s)	Potentially located to south of Noble's Lane within archaeological investigation area (refer to Figure 3.2)	Footings and sub-surface structural remains, household and personal artefacts	Nil – outside (to north of) mine area (refer to Figure 3.2).
Current Dulwich Homestead (1870)	Extant Homestead = outside area of works (refer to Figure 3.2).	Standing , intact structures, underfloor deposits, sub-surface structural remains, household and personal artefacts, formal gardens, outbuildings	Nil – outside (to north of mine area (refer to Figure 3.2).
		Original stables and coach house constructed 200 feet from the house	Nil – outside (to north of) mine area (refer to Figure 3.2).
Timber Footings	Located to south of Nobles lane within archaeological investigation area (refer to Figure 3.2)	Remnant timber footings, sub-surface structural remains, household and personal artefacts.	Nil – outside (to north of) mine area (refer to Figure 3.2).
Potential blacksmiths site	Located to north of Nobles lane within archaeological investigation area (refer to Figure 3.2)	Remnant footings and slabs, sub-surface structural remains, household and personal artefacts. Extant tree plantings	Nil – outside (to north of) mine area (refer to Figure 3.2).
Potential house site	Located to north of Nobles lane outside archaeological investigation area (refer to Figure 3.2)	Remnant footings and slabs, sub-surface structural remains, household and personal artefacts. Extant tree plantings	Nil – outside (to north of) mine area (refer to Figure 3.2).
Artefact Deposit	Located alongside Station Creek outside archaeological investigation area (refer to Figure 3.2)	Sub-surface artefacts	Nil – outside (to west of) mine area (refer to Figure 3.2).

Information sourced from: Nexus 2008 and ERM 2009

Document Title:	Stage 2 Non-Aboriginal Heritage Management Plan – Rixs Creek North		Document Owner:	John Hindmarsh
Prepared By:	John Hindmarsh	Print Date:	12-Feb-16	Version No: 3.1
Reviewed By:				Issue Date: 12/02/2016
Approved By:	Garry Bailey	Review Frequency:	36 MONTHS	Page No: G of 69

Note that none of these potential archaeological sites are likely to be located in the vicinity of proposed mine works or impacted as a result of proposed mine works, with the potential exception of the installation of a tree screen between the present Dulwich property and the proposed mine area which could impact 1830s/1870s related remains (refer to **Section 3.4**). This tree planting was completed approximately 10 years ago.

3.2.2 Previously Identified Zones of Archaeological Potential

The Nexus 2008 assessment identified three Zones of archaeological potential, all of which fall within the archaeological investigation area (refer to **Figure 3.3**).

- Zone 1. Identified as an area where the second Glennie homestead may potentially be located. *Note the second Glennie Homestead is now considered to be located in the vicinity of the present Dulwich Homestead (within Zone 3). Zone 1 is no longer considered to be an area of archaeological potential.*
- Zone 2. Identified as the area to the south of the existing Dulwich Homestead established to include the James Halliday Glennie grave site and potential for sub-surface remains from approximately 1870. *Note the James Glennie grave site falls outside the current mapped boundary of Zone 2 (refer to **Figure 3.3**). This area also has the potential for sub-surface remains associated with the second 1830s Glennie homestead.*
- Zone 3. Identified as the current Dulwich property. *Note the area also has the potential of subsurface archaeological remains associated with both the 1830s and 1870s period of use.*

All proposed open cut mine works are to the south of the zones of archaeological potential (as identified in the 2008 Nexus assessment) and the archaeological investigation area with the potential exception of the installation of a tree screen between the present Dulwich property and the proposed mine area (refer to **Section 3.3.2**).

5.3 3.3 Proposed Works

3.3.1 Rixs Creek North – former Integra Open Cut Project

The Rixs Creek North Project comprises the continuation of mining activities being undertaken within the adjacent south pit (refer to **Figure 1.2**) and includes but is not limited to:

- Progressive soil stripping prior to mining to conserve all topsoil and subsoil materials in areas to be disturbed for use in subsequent rehabilitation activities.
- Mining using truck and shovel/excavator mining methods with a maximum of 10 blasts initiated in one week.
- Emplacement of waste material into and over the footprint of the existing south pit and proposed pit. With the exception of materials required for amenity bunding and/or road construction, no overburden would be emplaced out-of-pit.
- Ongoing use of existing infrastructure.

All proposed works are to the south of the archaeological investigation area with the exception of:

- the potential installation of a tree screen between the present Dulwich property and the proposed mine area; and
- the drainage works addressed in the Stage 1 NAHMP.

Document Title:	Stage 2 Non-Aboriginal Heritage Management Plan – Rixs Creek North			Document Owner:	John Hindmarsh
Prepared By:	John Hindmarsh	Print Date:	12-Feb-16	Version No:	3.1
Reviewed By:				Issue Date:	12/02/2016
Approved By:	Garry Bailey	Review Frequency:	36 MONTHS	Page No:	H of 69

Tree screening has been requested by the current owners of the Dulwich property and the appropriate location will be negotiated with the current owners. Although the location of the tree screening has not been finalised the proposed tree screen location may require further archaeological investigation prior to planting the trees. Tube stock (and/or tree seed) will be planted no deeper than 100 millimetres.

The Stage 1 NAHMP detailed the proposed northern clean water diversion to reduce and separate clean water from entering the dirty water system. The proposed works comprise the construction of a contour drain along the southern boundary of the archaeological investigation area comprising a 2 metre wide central channel with a down slope soil bund (refer to **Figures 1.4** and **3.4**).

5.4 3.4 Potential Impacts

3.4.1 Open Cut Project

As discussed in **Section 3.3.2** all proposed mine works, with the exception of the potential installation of a tree screen and the drainage works addressed in the Stage 1 NAHMP, are to the south of the archaeological investigation area and the archaeological zones identified in the 2008 Nexus assessment. No potential historical archaeological or heritage resource has been identified within the proposed Extended South Pit mine area (refer to **Figure 3.1**)

The available historical evidence (including land title searches, 1820 and 1830 survey plans and other historical documentation) and the ground truthing of the results of the research indicate that all potential known archaeological resources associated with the Glennie (or other) period of land use and occupation are located to the north of the proposed mine area. All identified potential archaeological remains (including the James Halliday Glennie grave site (refer to **Figure 3.1**) are located to the north of the mine area boundary crossing the site from north-west to south-east to the south of the existing Dulwich property (refer to **Figure 3.1**). All proposed mine works, with the exception of the potential installation of a tree screen are located to the south of the existing fence line delineating the northern boundary of the mine area (refer to **Figure 3.1**).

The potential archaeological resource likely to be present within the wider archaeological investigation area to the north of mine area boundary includes (but is not limited to):

- The first Glennie house/slab hut site and associated convict quarters and outbuildings (1820s) - likely located to the south of Nobles Lane (refer to **Figure 3.1**)
- Second phase Dulwich Homestead site/Glennie House site and associated convict quarters and outbuildings (1830s) – likely located close to present Dulwich property and extant homestead (refer to **Figure 3.1**)
- Alcorn's Inn/the Greyhound Inn (1830s) – likely located to the south of Nobles Lane (refer to **Figure 3.1**)
- Grave site of James Halliday Glennie (1843) – located within archaeological investigation area to north of the mine area boundary (refer to **Figure 3.1**)
- Archaeological remains associated with the current Dulwich Homestead (1870)
- Previously unidentified remains (blacksmiths site and house site) to the north of Nobles Lane.

A previously unidentified potential artefact deposit is located along Station Creek (refer to **Figure 3.1**). This is outside the Open Cut Area boundary and will not be impacted by proposed mine works (refer to **Figure 3.1**)

Document Title:	Stage 2 Non-Aboriginal Heritage Management Plan – Rixs Creek North			Document Owner:	John Hindmarsh
Prepared By:	John Hindmarsh	Print Date:	12-Feb-16	Version No:	3.1
Reviewed By:				Issue Date:	12/02/2016
Approved By:	Garry Bailey	Review Frequency:	36 MONTHS	Page No:	I of 69

The remains of a small barn consisting of a timber frame comprising a number of upright timber posts and beams is located along the northern boundary of the mine area (refer to **Figure 3.2**). The former barn is not expected to be impacted by the proposed mine works. The former barn is typical of rural infrastructure found throughout the wider Hunter area and has not been assessed as having any heritage significance.

No potential for significant archaeological deposits or remains has been identified within the area of the proposed mine works, with the exception of the proposed tree screening which may impact 1830s/1870s related remains associated with the second phase Glennie homestead and the present Dulwich property.

Document Title:	Stage 2 Non-Aboriginal Heritage Management Plan – Rixs Creek North			Document Owner:	John Hindmarsh
Prepared By:	John Hindmarsh	Print Date:	12-Feb-16	Version No:	3.1
Reviewed By:				Issue Date:	12/02/2016
Approved By:	Garry Bailey	Review Frequency:	36 MONTHS	Page No:	J of 69



Legend

- Archaeological Investigation Area
- Mine Area - Extended South Pit (western extension)
- Zones of Archaeological Potential

FIGURE 3.3

Zones of Archaeological Potential

Document Title:	Stage 2 Non-Aboriginal Heritage Management Plan – Rixs Creek North			Document Owner:	John Hindmarsh
Prepared By:	John Hindmarsh	Print Date:	12-Feb-16	Version No:	3.1
Reviewed By:				Issue Date:	12/02/2016
Approved By:	Garry Bailey	Review Frequency:	36 MONTHS	Page No:	B of 69



FIGURE 3.4
 Detail of Location of
 Proposed Contour Drain CWD1

4. Stage 2 Non-Aboriginal Heritage Management Plan Requirements

This section of the report comprises the non-Aboriginal heritage management strategy for the proposed works and addresses Project Approval Conditions 46 and 47 of Schedule 3 (refer to **Table 2.1**).

4.1 Department of Planning & Environment Consultant Endorsement

This Stage 2 NAHMP has been prepared by Tim Adams of Umwelt (Australia) Pty Limited (Umwelt). The DPE endorsed the appointment of Tim Adams to prepare this management plan and undertake any further archaeological works, in accordance with Project Approval conditions, on 11 April 2011.

4.2 Consultation

As per Condition 47 of Schedule 3 of the Project Approval, this NAHMP is to be prepared in consultation with the Heritage Branch, OEH, Council, local historical organisations and relevant landowners.

The preparation of the Stage 1 and Stage 2 NAHMPs, and in particular the requirement for further historical investigation of the archaeological investigation area and the outcomes of the historical research and investigation have been broadly discussed with Kylie Seretis (Heritage Specialist, Mining and Industry Projects, Major Project Assessments, DPE) on several occasions during the preparation of the Stage 1 and Stage 2 NAHMPs and the *Archaeological Research and Investigation—Integra Coal Archaeological Investigation Area* (Umwelt 2011 refer to **Appendix 2**).

The draft Stage 1 NAHMP was submitted to the Heritage Branch, OEH and any comments incorporated into the Stage 1 report prior to its submission to DPE. Where relevant these have also been reflected within this Stage 2 NAHMP.

This final Stage 2 NAHMP has been submitted to the Heritage Branch, OEH for review and comment prior to its submission to DPE and will also be submitted to the Council, local historical organisations and relevant landowners concurrently with submission to DPE. As such, any comments provided by the Heritage Branch, Council, local historical organisations and relevant landowners will be included in a revised document, which will also address any comments from DPE review, which will be re-submitted to the DPE.

4.3 Further Archaeological/Historical Investigation

As discussed in **Section 3.0** further historical research and investigation (comprising research across the archaeological investigation area and ground truthing the results of the research) has been undertaken in the archaeological investigation area outlined in purple on the figure in Appendix 8 of Project Approval in accordance with Conditions 46 and 47 of Schedule 3 of the Project Approval (refer to **Figure 1.3** and **Appendix 2**).

As no potential for significant archaeological deposits has been identified within the proposed mine area, no further archaeological testing or further archaeological investigation is warranted with regards to the heritage management of the proposed mine area (with the exception of the proposed tree planting). General management strategies specific to the proposed works are discussed below.

Document Title:	Stage 2 Non-Aboriginal Heritage Management Plan – Rixs Creek North			Document Owner:	John Hindmarsh
Prepared By:	John Hindmarsh	Print Date:	12-Feb-16	Version No:	3.1
Reviewed By:				Issue Date:	12/02/2016
Approved By:	Garry Bailey	Review Frequency:	36 MONTHS	Page No:	B of 69

Any additional ground disturbing activities, not identified in the report, located within the archaeological investigation area or in an area of identified archaeological potential, will be subject to archaeological assessment to identify the potential for archaeological remains. The following procedure will be followed:

- If the potential for archaeological remains is identified, archaeological testing of the potential archaeological resource will be undertaken in accordance with a DPE endorsed archaeological work method statement.
- In the event that testing works identify areas with no archaeological potential no further archaeological investigation works will be required in those areas.
- In the event testing works identify areas of significant archaeological remains and/or deposits further archaeological investigation/excavation will be undertaken, following discussion with the Heritage Branch, OEH.

Any further archaeological investigation/excavation will be undertaken in order to recover information through the excavation and recording of the archaeological remains and thus realise the archaeological research potential of the area. All archaeological excavation will be undertaken to normal professional standards and accepted best practice procedures, in accordance with an archaeological work method statement (following endorsement from DPE).

Archaeological Work Method Statement

An archaeological work method statement will be prepared and endorsed by DPE prior to any archaeological testing/excavation works.

The work method statement should include but not necessarily be limited to:

- Detailed excavation methodology.
- Recording methodology.
- Artefact methodology.
- If appropriate, a revised significance assessment building on the assessment developed as part of the 2008 Nexus assessment.
- If appropriate, a revised research design building on the research questions developed as part of the 2008 Nexus assessment.

A report of the results of any archaeological testing/investigation would need to be produced at the completion of the on-site archaeological works program. The format, content and length of the report will be determined by the nature and extent of the archaeological remains uncovered during archaeological investigation and the size of the artefact collection recovered from the site. The report should include, as appropriate:

- a description of the results of the investigation;
- a formal response to the research design;
- revised significance assessment;
- the results of post excavation analysis of artefact collection; and
- primary site records, including measured drawings and photographs.

Document Title:	Stage 2 Non-Aboriginal Heritage Management Plan – Rixs Creek North			Document Owner:	John Hindmarsh
Prepared By:	John Hindmarsh	Print Date:	12-Feb-16	Version No:	3.1
Reviewed By:				Issue Date:	12/02/2016
Approved By:	Garry Bailey	Review Frequency:	36 MONTHS	Page No:	C of 69

Areas of proposed tree plantings

Any areas of tree planting proposed between the Dulwich Property and the mine area or elsewhere within the archaeological investigation area will require further archaeological investigation in accordance with the procedures discussed above.

4.4 James Halliday Glennie Grave Site

At present, the James Glennie grave site is outside the area of proposed disturbance. The grave site is located to the north of the current boundary of the western extension of the existing south pit (refer to **Figure 3.2**). The grave site is located to the north of the existing mine lease boundary fence line and will not be impacted by the proposed mine works. As such the grave site will not be archaeologically excavated at this time.

Protective fencing will be installed around the grave site to ensure no accidental impacts occur during the life of the project. Signage will be installed on the fencing identifying that access to the fenced area is not permitted.

If the mine plan changes to include the James Glennie grave site, the grave will be archaeologically excavated in accordance with Condition 47(e) of Schedule 3 of the Project Approval and the Management of skeletal remains discussed in **Section 4.9.5** of this report.

In addition to the procedures discussed in **Section 4.9.5** consultation should be undertaken with family descendants.

4.5 Dulwich Property

At present, the Dulwich property is not to be mined as part of the western extension of the existing south pit (refer to **Figure 3.2**). As such, in accordance with Condition 47(e) of Schedule 3 of the Project Approval, this plan includes programs & procedures for the preparation of a detailed Conservation Management Plan for the Dulwich property, which is subject to agreement of the landowner. Also in accordance with the open cut project statement of commitments, specifically commitment J3, if Dulwich is not acquired, a Conservation Management Plan will be prepared to minimise and monitor project impacts on Dulwich prior to commencement of activities which may impact on Zone 3 (refer to **Section 3.2.3**). As such Rixs Creek North will develop a Conservation Management Plan in accordance with the applicable guidelines, programs & procedures outlined in **Section 4.5.1** and seek agreement from the landowner prior to open cut mining operations and blasting occurring within 500 metres of the Dulwich property.

4.5.1 Conservation Management Plan

The Conservation Management Plan (CMP) would be prepared to establish the significance of the Dulwich property and guide its future care and management. The CMP would include, but not be limited to, historical analysis, a Statement of Significance and conservation policies for its future management. The CMP would be prepared in accordance with Heritage Branch, OEH guidelines on the preparation of CMPs and the *Conservation Plan A Guide to the Preparation of Conservation Plans for Places of European Cultural Significance* (Kerr 2006), which presents a methodology for the preparation of conservation plans.

As part of the preparation of the CMP previous reports and documentation will be reviewed and information referred to rather than repeated unless of particular relevance.

In July 2011 Umwelt produced at report “*Integra Coal Operations Pty Ltd. Archaeological Research and Investigation-Integra Coal Archaeological Investigation Area.*” This report does not identify anything of archaeological significance within the proposed approved mining areas.

Document Title:	Stage 2 Non-Aboriginal Heritage Management Plan – Rixs Creek North			Document Owner:	John Hindmarsh
Prepared By:	John Hindmarsh	Print Date:	12-Feb-16	Version No:	3.1
Reviewed By:				Issue Date:	12/02/2016
Approved By:	Garry Bailey	Review Frequency:	36 MONTHS	Page No:	D of 69

4.5.1 Archival Recording

If the Dulwich property is proposed to be mined in the future, an archival recording of the property will be undertaken prior to the commencement of any activities that would potentially disturb/impact the property. The archival recording will be undertaken in accordance with the programs/procedures discussed in **Section 4.6**. Note that further archaeological investigation would also be undertaken within the Dulwich property in accordance with the procedures discussed in **Section 4.3**.

5.5 4.6 Program/Procedures for photographic and archival recording

At present, no heritage items are proposed to be destroyed by the project. Should any heritage items be identified as potentially being disturbed/impacted (for example the Dulwich property) an archival recording will be prepared in accordance with the procedures discussed below.

4.6.1 Onsite Digital Archival Photographic Recording

Any archival recording will be undertaken in accordance with Heritage Branch, OEH guidelines *Photographic Recording of Heritage Items Using Film or Digital Capture* (Heritage Office 2006).

The photographic recording will include:

- contextual photographs showing site/item and remains, and relevant relationships to other sites/items and surroundings;
- detailed photographs of each site/item;
- preparation of plans of the sites/items (unless nature of site/item does not warrant a site plan. In these instances the photographs will be accompanied by a plan indicating the location of the site only); and
- photographic plans of all sites/items.

The photographic recording will then be collated into a photographic archival record for submission to DP&I.

4.6.2 Photographic Archival Record

The photographic archival record will comprise three copies of a brief report detailing background information and methodology in addition to the actual archival record. The photographic prints forming the archival record will be processed with archivally stable inks on archivally acceptable photographic paper and stored in archival polypropylene sleeves. The photographic report and photographic materials will be stored in an archival folder.

The archival record will include:

- one full set of archival 6" x 4" colour prints processed with archivally stable inks on archivally acceptable photographic paper, in copy of reports for DP&I and Integra Coal;
- one set of photocopies of full set of colour prints in copy of report for Local Council Library (for public access);
- photographic catalogue sheets (photographic record sheets);
- measured plans of each site/item unless nature of site did not warrant a site plan. In these instances the photographs will be accompanied by a plan indicating the location of the site only;

Document Title:	Stage 2 Non-Aboriginal Heritage Management Plan – Rixs Creek North			Document Owner:	John Hindmarsh
Prepared By:	John Hindmarsh	Print Date:	12-Feb-16	Version No:	3.1
Reviewed By:				Issue Date:	12/02/2016
Approved By:	Garry Bailey	Review Frequency:	36 MONTHS	Page No:	E of 69

- photographic plans (referenced to the photographic catalogue sheets) particular to each site showing the locations of all of the photographic images unless nature of item does not warrant a photographic plan; and
- three CDs with copies of all of the above, one copy each for DP&E, the Local Council Library and Rix's Creek Pty Ltd .

4.7 Conserving, Managing, Monitoring, Relocating Archaeological Remains

At present there are no known non-Aboriginal sites, objects or deposits on site that are in areas subject to potential impacts.

There is no potential archaeological resource within the Underground Workings Boundary.

There is a potential archaeological resource to the north and south of Nobles Lane – outside both the Open Cut Project Area Boundary and the Underground Workings Boundary but within the Integra Mine Complex Area Boundary and the archaeological investigation area. There is also potential for an archaeological resource in the vicinity of the present Dulwich property.

None of the potential sites discussed in **Section 3.0** are located in the vicinity of the proposed mine works or impacted as a result of proposed works, with the potential exception of the proposed installation of a tree screen between the present Dulwich property and the proposed mine area which could impact 1830s/1870s related remains.

With the exception of the potential archaeological resource associated with the second phase Dulwich Homestead site/Glennie House site (from 1830s and including the James Halliday Glennie grave site), the current Dulwich property (from 1870s) and the potential artefact deposit identified alongside Station Creek there is no identified archaeological resource within Open Cut Project Area Boundary. The potential archaeological resource located within the Open Cut Project Area Boundary is located to the north of the Mine Area – Extended South Pit and is not proposed to be impacted. Signage will be installed on the existing mine lease boundary fence line identifying that access to the area north of the mine area boundary is not permitted during works unless the relevant authorization has been obtained (for example if tree planting is to be undertaken. Refer to **Section 4.3**).

As discussed in **Section 4.4**, protective fencing will be installed around the James Halliday Glennie grave to ensure no accidental impacts occur during the life of the project. Signage will be installed on the fencing identifying that access to the fenced area is not permitted.

All identified potential archaeological sites will be mapped on drawings and plans and be supplied to any relevant personnel and contractors who may be working within close proximity to these sites (refer to **Section 4.9.1**). In addition a non-Aboriginal Historical Heritage Induction will be included as part of any inductions undertaken by site personnel and contractors (refer to **Section 4.9.3**).

If an area of potential archaeological remains is proposed to be impacted, the appropriate level of conservation, management, monitoring and relocation of any non-Aboriginal objects and deposits other than that discussed in this report will be addressed where necessary in a specific archaeological work method statements (as discussed in **Section 4.3**)

Document Title:	Stage 2 Non-Aboriginal Heritage Management Plan – Rixs Creek North			Document Owner:	John Hindmarsh
Prepared By:	John Hindmarsh	Print Date:	12-Feb-16	Version No:	3.1
Reviewed By:				Issue Date:	12/02/2016
Approved By:	Garry Bailey	Review Frequency:	36 MONTHS	Page No:	F of 69

4.8 Interpretation

Provision should be made for the interpretation of any archaeological resource exposed during any further archaeological investigations carried out on site.

A public information program should be considered during any archaeological investigation works at the proposed project area. Provision could be made for media releases, information leaflets and if appropriate a public open day.

An Interpretation Strategy/Plan should be developed when the nature of the archaeological resource is known. The strategy should consider (and incorporate, where relevant) the results of archaeological investigation of the site. Interpretation opportunities could include brochures or other more innovative media.

4.9 General Management Strategies

4.9.1 Mapping of Heritage Sites

All identified potential archaeological sites must be mapped on drawings and plans and be supplied to any relevant personnel and contractors who may be working within close proximity to these sites.

4.9.2 Provision of NAHMP

The Mine Manager – Rixs Creek North and Environment Officer will ensure that all personnel and contractors working on the project are supplied with copies of the NAHMP and any other detailed plans/specifications they may require to ensure adherence to the management strategy.

4.9.3 Heritage Inductions

A non-Aboriginal Historical Heritage Induction will be included as part of any inductions undertaken by site personnel and contractors. All site personnel and contractors involved in proposed works that have the possibility of impacting identified heritage sites will undertake an induction regarding the heritage status and values of the identified archaeological and historical heritage resource within the project area.

The inductions will include (but not necessarily be limited to) the following:

- the nature and location of the potential archaeological sites;
- the significance of the potential archaeological resource;
- the nature of the management strategies being undertaken;
- procedures for contacting the Environment Superintendent if previously unknown historical heritage items and/or artefacts are uncovered during works; and
- information related to the relevant legislation for the protection of historical heritage sites/items (particularly provisions Section 139 and 146 of the Heritage Act 1977 (NSW)) and the penalties which may arise if sites/items are disturbed/destroyed.

Document Title:	Stage 2 Non-Aboriginal Heritage Management Plan – Rixs Creek North			Document Owner:	John Hindmarsh
Prepared By:	John Hindmarsh	Print Date:	12-Feb-16	Version No:	3.1
Reviewed By:				Issue Date:	12/02/2016
Approved By:	Garry Bailey	Review Frequency:	36 MONTHS	Page No:	G of 69

4.9.4 Management of Discovery of New Non-Aboriginal Objects

If during the course of works any previously unknown historical archaeological material or heritage sites/items are uncovered or identified, all work in the area of the item(s) shall cease immediately and a suitably qualified and experienced archaeologist will be consulted. If the archaeologist considers the archaeological material uncovered constitutes an archaeological 'relic', the Heritage Branch, OEH will be consulted, in accordance with Section 146 of the *Heritage Act 1977* (NSW), to determine an appropriate course of action prior to the recommencement of work in the area of the item.

A 'relic' under the Heritage Act is defined as any deposit, object or material evidence that:

- relates to the settlement of the area that comprises New South Wales, not being Aboriginal settlement; and
- is of State or local heritage significance.

4.9.5 Management of Skeletal Remains

In the unlikely event that a burial site or human skeletal material is exposed during works, all relevant procedures for excavation and removal will be undertaken in accordance with the *Policy Directive – Exhumation of Human Remains* (NSW Department of Health 2008), *Skeletal Remains – Guidelines for the Management of Human Skeletal Remains under the Heritage Act 1977* (NSW Heritage Office 1998) and the *Aboriginal Cultural Heritage Standards and Guidelines Kit* (NPWS 1997). As such the following process is to be followed:

- as soon as remains are exposed, work is to halt immediately to allow assessment and management;
- contact local police, OEH and the Heritage Branch;
- a physical or forensic anthropologist should inspect the remains in situ, and make a determination of ancestry (Aboriginal or non-Aboriginal) and antiquity (pre-contact, historic or forensic);
- if the remains are identified as forensic the area is deemed as crime scene; or
- if the remains are identified as Aboriginal, the site is to be secured and the OEH and all registered Aboriginal parties are to be notified in writing; or
- if the remains are non-Aboriginal (historical) remains, the site is to be secured and the Heritage Branch is to be contacted.

The above process functions only to appropriately identify the remains and secure the site. From this time, the management of the remains is to be determined through liaison with the appropriate stakeholders (New South Wales Police Force, forensic anthropologist, OEH, Heritage Branch, DP&I, registered Aboriginal parties, DP&I endorsed archaeologist etc) and in accordance with the *Public Health Act 1991*.

Any human skeletal remains uncovered during the course of works will be removed in a sensitive and dignified manner. Approval from NSW Health, under the *Public Health Act 1991*, will be required prior to removing/exhuming any skeletal remains. Controlled excavation and removal by the site archaeologists and other appropriate specialists (forensic anthropologist, registered Aboriginal parties, New South Wales Police Force, as appropriate) will be undertaken in accordance with Heritage Branch, OEH Guidelines (*Skeletal Remains: Guidelines for the*

Document Title:	Stage 2 Non-Aboriginal Heritage Management Plan – Rixs Creek North			Document Owner:	John Hindmarsh
Prepared By:	John Hindmarsh	Print Date:	12-Feb-16	Version No:	3.1
Reviewed By:				Issue Date:	12/02/2016
Approved By:	Garry Bailey	Review Frequency:	36 MONTHS	Page No:	H of 69

Management of Human Skeletal Remains under the Heritage Act 1977) and any requirements of the OEH, DP&I and NSW Health.

Prior to removal a site specific management plan for the removal of any potential human skeletal remains uncovered will be developed, in consultation with a physical anthropologist, the Heritage Branch, OEH, registered Aboriginal parties and other relevant stakeholder groups, if required. The management plan would need to consider the issues detailed in the Heritage Branch Skeletal Remains Guidelines. These issues include but are not limited to:

- **Excavation issues** - including personnel who may need to be required, Occupational Health and Safety and recording.
- **Access issues** - including limited access, security and stakeholder participation.
- **Management issues** – including management during excavation and analysis, publicity, interpretation, location of interim resting place (in consultation with relevant stakeholders), ongoing curation of recovered materials and professional access to data.
- **Re-interment and commemoration** – including appropriate consultation with relevant stakeholders.

Locations of interim resting places and final re-interment/repository (as appropriate) for any human skeletal remains (including those of James Glennie Halliday if the grave site is excavated) will depend on the nature of the remains and outcome of consultation, however interim resting places could comprise the Coroner's Office or Department of Forensic Medicine (if remains forensic), local undertakers or appropriate research facility (if historic) or an appropriate interim keeping place as indicated following consultation (if Aboriginal).

4.9.6 Archaeological Reporting

As discussed in **Section 4.3** a report of the results of any archaeological testing/investigation would need to be produced at the completion of the on-site archaeological works program. A final report will also be prepared compiling all of the results of any archaeological investigation and lodged with the Heritage Branch, Council and Local Historical Society.

4.9.7 Further Assessment

If any additional potential impacts or deterioration to any identified heritage items or potential archaeological resource, other than those discussed in this report, are identified prior to or during the course of works, additional assessment may be required to be undertaken in accordance with professional standards and guidelines.

Document Title:	Stage 2 Non-Aboriginal Heritage Management Plan – Rixs Creek North			Document Owner:	John Hindmarsh
Prepared By:	John Hindmarsh	Print Date:	12-Feb-16	Version No:	3.1
Reviewed By:				Issue Date:	12/02/2016
Approved By:	Garry Bailey	Review Frequency:	36 MONTHS	Page No:	I of 69

5. Roles and Responsibilities

Relevant roles and responsibilities associated with this NAHMP are presented in **Table 5.1** below.

Table 5.1 - Roles and Responsibilities

Role	Responsibilities
Mine Manager (Rixs Creek North)	Responsible for providing adequate resources for the implementation of this NAHMP
Senior Environmental Officer	Responsible for the implementation of this plan for mining operations to ensure compliance with consent requirements. Responsible for ensuring that the plan is relevant to current operations. Responsible for inclusion of non-Aboriginal heritage induction component for all relevant mine personnel. Responsible for contacting a suitably qualified and experienced archaeologist, the Heritage Branch and OEH as appropriate should previously unknown historical archaeological material/ heritage sites/items be uncovered or identified. Responsible for contacting all appropriate stakeholders in the event that human skeletal material is exposed during works Responsible for coordinating the reviews of this NAHMP.
Officer	
Environment Officer	Responsible for coordinating the day to day implementation of this NAHMP, spanning both conservation and salvage activities. Responsible for the training or coordination of training for the non-Aboriginal heritage induction. Responsible for ensuring the NAHMP is available for viewing on site. Responsible for ensuring that potential archaeological sites are contained within the mines survey records and can be incorporated in plans generated for future works. Responsible for installing fencing and signage around the James Halliday Glennie grave site as specified in Section 4.4 Responsible for ensuring a report of results at the completion of any archaeological testing/investigation undertaken is completed.
All employees and contractors	Responsible for complying with the management requirements and commitments contained within this management plan relevant to their roles. Responsible for reporting all non compliances with this plan as per the Integra Coal reporting procedures

Document Title:	Stage 2 Non-Aboriginal Heritage Management Plan – Rixs Creek North			Document Owner:	John Hindmarsh
Prepared By:	John Hindmarsh	Print Date:	12-Feb-16	Version No:	3.1
Reviewed By:				Issue Date:	12/02/2016
Approved By:	Garry Bailey	Review Frequency:	36 MONTHS	Page No:	J of 69

6. Review

The review of this document will be in line with the site's Environmental Management Strategy. That is, reviews will be conducted after independent environmental audits, following a significant change to the mine plan that may impact non-Aboriginal heritage and as required by relevant consent conditions. The purpose of the review is to ensure that this Stage 2 NAHMP remains suitable, adequate and effective.

The Rix's Creek Mine Annual Review Report prepared each year for Rix's Creek Pty Ltd will include details regarding any mitigation works undertaken in relation to Non-Aboriginal heritage and the potential archaeological resource of the project area.

7. References and Associated Documentation

ERM 2009a. *Proposed Integra Underground Coal Project Environmental Assessment*

ERM 2009b. *Integra Underground Coal Project Heritage Assessment*

Nexus 2008. *Assessment of Historical Archaeology: Integra Open Cut Project, Singleton*. NSW

NSW Department of Health 2008. *Policy Directive –Exhumation of Human Remains*

NSW Heritage Office 1998. *Skeletal Remains – Guidelines for the Management of Human Skeletal Remains under the Heritage Act 1977*

NSW Heritage Office 2006. *Photographic Recording of Heritage Items Using Film or Digital Capture*

Umwelt 2003a. *Mt Owen Operations Environmental Impact Statement Appendix 14*. Report to Hunter Valley Coal Corporation.

Umwelt 2003b. *Archaeological Survey of Main Creek*. Report to Glennies Creek Coal Management Pty Limited

Umwelt 2004. *Survey and Assessment of Impact on Aboriginal Cultural Heritage and Archaeological Values, Main Creek, Hunter Valley, NSW*. Report to Glennies Creek Coal Management Pty Limited

Umwelt 2011. *Archaeological Research and Investigation—Integra Coal Investigation Area*

URS 2009. *Integra Open Cut Project Environmental Assessment*.

Document Title:	Stage 2 Non-Aboriginal Heritage Management Plan – Rixs Creek North			Document Owner:	John Hindmarsh
Prepared By:	John Hindmarsh	Print Date:	12-Feb-16	Version No:	3.1
Reviewed By:				Issue Date:	12/02/2016
Approved By:	Garry Bailey	Review Frequency:	36 MONTHS	Page No:	K of 69

8. Glossary

AEMR	Annual Environmental Management Report
CMP	Conservation Management Plan
CMS	Conservation Management Strategy
DECCW	Department of Environment, Climate Change and Water – Now - Dept. Primary Industries
DP&I	Department of Planning and Infrastructure Now - Dept. Planning & Environment (DP&E)
ICOMOS	International Council on Monuments and Sites
NAHMP	Non-Aboriginal Management Plan
NSW	New South Wales
NPWS	National Parks and Wildlife Service
OEH	Office of Environment and Heritage

Document Title:	Stage 2 Non-Aboriginal Heritage Management Plan – Rixs Creek North			Document Owner:	John Hindmarsh
Prepared By:	John Hindmarsh	Print Date:	12-Feb-16	Version No:	3.1
Reviewed By:				Issue Date:	12/02/2016
Approved By:	Garry Bailey	Review Frequency:	36 MONTHS	Page No:	L of 69

9. Appendices

5.6 9.1 Appendix 1 - Excerpt from Project Approval

HERITAGE

Further Archaeological Investigation

46. Prior to carrying out any development in the parts of the site outlined in purple on the figure in Appendix 8, unless the Director-General agrees otherwise, the Proponent shall carry out further archaeological testing and investigation within the broader area outlined in purple on the figure in Appendix 8 to the satisfaction of the Director-General.

Heritage Management Plan

47. The Proponent shall prepare and implement a Heritage Management Plan for the projects to the satisfaction of the Director-General. This plan must:
- be prepared by suitably qualified and experienced persons whose appointment has been endorsed by the Director-General;
 - be prepared in consultation with **OEH**, the Aboriginal community, the Heritage Branch, Council, local historical organisations and any relevant landowners;
 - be submitted to the Director-General for approval by the end of March 2011;
 - include programs/procedures for the following in relation to Aboriginal heritage management on site:
 - recording, salvaging and/or managing all Aboriginal sites, objects and deposits that are to be destroyed within the open cut project area;
 - conserving, managing and monitoring all Aboriginal sites, objects and deposits that are to be protected within the open cut project area, including the 3 scarred trees identified within the western mining area;
 - maintaining and managing access to Aboriginal sites, objects and deposits by the Aboriginal community, including provision of an appropriate Keeping Place;
 - managing the discovery of any new Aboriginal objects or skeletal remains identified during the projects; and
 - ongoing consultation and involvement of the Aboriginal community in the conservation and management of Aboriginal cultural heritage values on the site.
 - include programs/ procedures for the following, in accordance with the applicable guidelines of the Heritage Branch:
 - further historical investigation of the area outlined in purple on the figure in Appendix 8 to identify the potential archaeological resources within the area,;
 - archaeological testing of the potential archaeological resources within the area outlined in purple on the figure in Appendix 8;
 - further archaeological investigation of any areas where the archaeological testing (referred to above) identifies significant archaeological deposits;
 - archaeological excavation of the known grave on site, identified as the James Halliday Glennie grave site;
 - detailed archival recording of the Dulwich property if it is to be mined, or the preparation of a detailed conservation management plan for the Dulwich property if it is not to be mined (subject to the agreement of the landowner);
 - archival recording of any other heritage items to be destroyed by the project;
 - conserving, managing, monitoring, and where appropriate, relocating any non-Aboriginal sites, objects and deposits on the site;
- interpreting the findings of the additional heritage or archaeological investigations carried out on the site; and
 - managing the discovery of any new non-Aboriginal objects or skeletal remains identified during the projects.

Document Title:	Stage 2 Non-Aboriginal Heritage Management Plan – Rixs Creek North			Document Owner:	John Hindmarsh
Prepared By:	John Hindmarsh	Print Date:	12-Feb-16	Version No:	3.1
Reviewed By:				Issue Date:	12/02/2016
Approved By:	Garry Bailey	Review Frequency:	36 MONTHS	Page No:	M of 69

**APPENDIX 8
AREA FOR FURTHER ARCHAEOLOGICAL INVESTIGATION**



Document Title:	Stage 2 Non-Aboriginal Heritage Management Plan – Rixs Creek North			Document Owner:	John Hindmarsh
Prepared By:	John Hindmarsh	Print Date:	12-Feb-16	Version No:	3.1
Reviewed By:				Issue Date:	12/02/2016
Approved By:	Garry Bailey	Review Frequency:	36 MONTHS	Page No:	N of 69

Final Appendix – DPE Letter of Approval of Waste Management Plan



John Hindmarsh
Environment and Community Manager
Rix's Creek Colliery
PO Box 4
East Maitland NSW 2323

Contact: Chris Knight
Phone: (02) 6575 3404
Fax: (02) 6575 3415
Email: christopher.knight@planning.nsw.gov.au
Our ref: PA 08_0102.

Dear John,

Rix's Creek North- Approval of Management Plans.

Thank you for forwarding the required Rix's Creek Management Plans to the Department of Planning & Environment (the Department or DP&E).

The Department has reviewed the following list of plans and is satisfied that they generally address the requirements set out in the relevant conditions of the Project Approval.

- Blast Management Plan
- Air Quality and Greenhouse Gas Management Plan
- Noise Management Plan
- Historic Management Plan
- Water Management Plan
- Waste Management Plan

Consequently, I would like to advise you that the Secretary has approved the above listed plans.

The above listed plans come into force on the 19th February 2016 and remain in force until replaced by any future updated approved plans and associated procedures.

Could you please place a copy of the approved management plans on your website and forward a finalised copy of the above plans (preferably in PDF format with a copy of this approval letter appended to each plan) for the Department's records by the 26th February 2016.

Should you have any queries on this matter, please do not hesitate to contact Chris Knight, Senior Compliance Officer, on (02) 6570 3404 or email. christopher.knight@planning.nsw.gov.au

Yours sincerely,

W Jones 16/2/16

Wayne Jones
A / Investigations (lead) Compliance Northern Region
as the Secretary's Nominee