

AIR QUALITY RESULTS 2015 # 2

License Number: 3391
Licensee: RIX'S CREEK PTY. LIMITED
 PO BOX 4
 EAST MAITLAND NSW 2323
Premises: RIX'S CREEK COLLIERY
 RIX'S CREEK LANE
 SINGLETON NSW 2330

Monitoring Frequency: Every 6 days
Sampling Method: AM-15
Limits: 90 ug/m³ annual average limit
Pollutant: Total Suspended Particulates
Units of measure: ug/m³

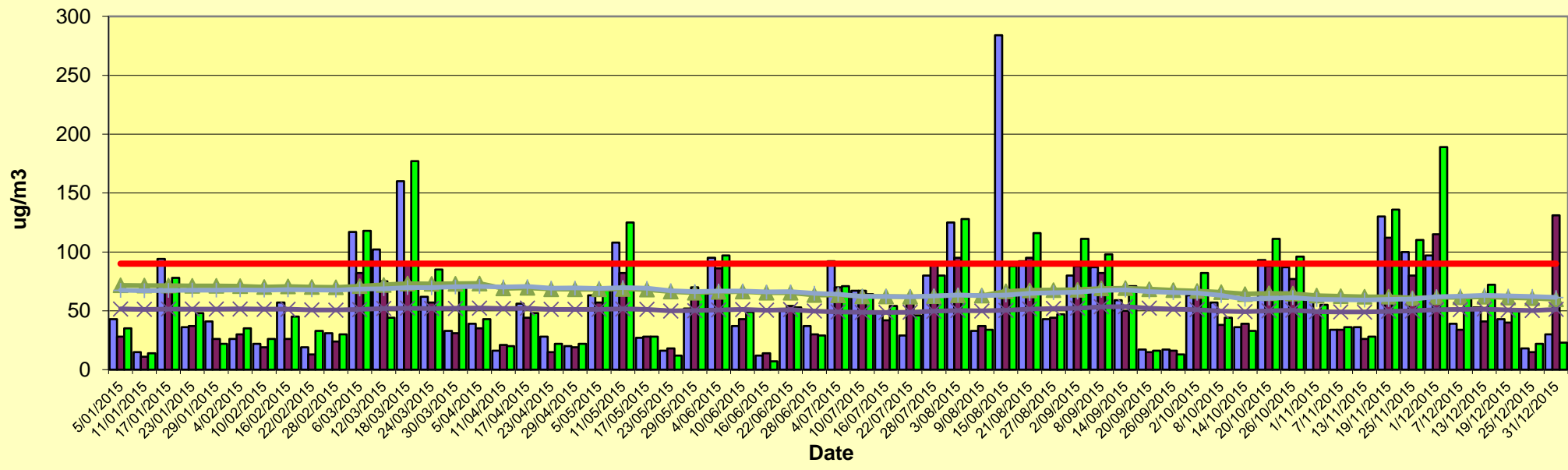
	Sampling Date	Retreat	Retreat Rolling Annual Average	Mines Rescue	Mines Rescue Rolling Annual Average	Rix's Creek	Rix's Creek Rolling Annual Average	Annual average limit
Published: 13 February 2015 Sampled: 23 January 2015 Obtained: 12 February 2015	5/01/2015	43	72	28	52	35	67	90
	11/01/2015	15	71	11	51	14	67	90
	17/01/2015	94	71	67	51	78	67	90
	23/01/2015	36	71	37	51	48	68	90
Published: 16 March 2015 Sampled: 22 February 2015 Obtained: 13 March 2015	29/01/2015	41	71	26	51	22	68	90
	4/02/2015	26	71	30	52	35	68	90
	10/02/2015	22	70	19	51	26	68	90
	16/02/2015	57	71	26	51	45	68	90
	22/02/2015	19	70	13	51	33	68	90
Published: 15 April 2015 Sampled: 24 March 2015 Obtained: 10 April 2015	28/02/2015	31	70	24	51	30	67	90
	6/03/2015	117	71	82	51	118	68	90
	12/03/2015	102	72	75	52	44	69	90
	18/03/2015	160	73	89	52	177	70	90
	24/03/2015	62	73	57	52	85	70	90
Published: 22 May 2015 Sampled: 23 April 2015 Obtained: 13 May 2015	30/03/2015	33	73	31	52	74	70	90
	5/04/2015	39	73	35	52	43	71	90
	11/04/2015	16	69	21	52	20	70	90
	17/04/2015	56	69	44	52	48	71	90
	23/04/2015	28	68	15	51	22	69	90
Published: 9 June 2015 Sampled: 23 May 2015 Obtained: 5 June 2015	29/04/2015	20	68	19	51	22	69	90
	5/05/2015	63	68	57	51	70	69	90
	11/05/2015	108	69	82	52	125	70	90
	17/05/2015	27	68	28	51	28	69	90
	23/05/2015	16	66	18	50	12	67	90
Published: 10 July 2015 Sampled: 28 June 2015 Obtained: 10 July 2015	29/05/2015	52	65	70	50	67	66	90
	4/06/2015	95	66	86	51	97	67	90
	10/06/2015	37	66	43	51	49	67	90
	16/06/2015	12	65	14	51	7	66	90
	22/06/2015	50	65	54	51	53	66	90
	28/06/2015	37	63	30	50	29	65	90
Published: 13 August 2015 Sampled: 22 July 2015 Obtained: 10 August 2015	4/07/2015	92	63	70	49	71	64	90
	10/07/2015	67	62	67	49	64	62	90
	16/07/2015	49	62	42	49	54	62	90
	22/07/2015	29	62	57	49	46	62	90
	28/07/2015	80	62	91	50	80	63	90
Published: 24 September 2015 Sampled: 21 August 2015 Obtained: 14 September 2015	3/08/2015	125	63	95	50	128	63	90
	9/08/2015	33	63	37	50	34	63	90
	15/08/2015	284	67	62	50	88	63	90
	21/08/2015	92	67	95	52	116	65	90
	27/08/2015	43	68	44	52	47	65	90
Published: 14 October 2015 Sampled: 26 September 2015 Obtained: 13 October 2015	2/09/2015	80	68	88	52	111	66	90
	8/09/2015	87	69	82	53	98	67	90
	14/09/2015	59	69	50	54	71	68	90
	20/09/2015	17	68	15	52	16	66	90
	26/09/2015	17	68	16	52	13	65	90
	2/10/2015	63	67	63	51	82	65	90
Published: 18 November 2015 Sampled: 26 October 2015 Obtained: 13 November 2015	8/10/2015	57	66	38	50	44	63	90
	14/10/2015	36	64	39	49	33	60	90
	20/10/2015	93	65	88	50	111	61	90
	26/10/2015	87	65	77	50	96	61	90
	1/11/2015	60	63	50	49	55	60	90
Published: 16 December 2015 Sampled: 25 November 2015 Obtained: 15 December 2015	7/11/2015	34	62	34	49	36	59	90
	13/11/2015	36	62	26	49	28	59	90
	19/11/2015	130	62	112	50	136	60	90
	25/11/2015	100	61	80	50	110	60	90
	1/12/2015	97	61	115	51	189	62	90
Published: 13 January 2016 Sampled: 31 December 2015 Obtained: 12 January 2016	7/12/2015	39	61	34	51	62	62	90
	13/12/2015	53	62	41	51	72	63	90
	19/12/2015	43	61	40	51	50	63	90
	25/12/2015	18	61	15	50	22	62	90
	31/12/2015	30	60	131	51	23	61	90

Minimum	12
Average	60
Maximum	284

11
51
131

7
61
189

Rix's Creek - Total Suspended Particulates 2015



Legend: The Retreat (blue bar), Mines Rescue (purple bar), Rix's Creek (green bar), Retreat Rolling Annual Average (green triangle), Mines Rescue Rolling Annual Average (purple cross), Rix's Creek Rolling Annual Average (blue square), NH&MRC Yearly Acceptable Level (red line).



Rix's Creek – High Volume Air Sampler Location Diagram.