

NOISE RESULTS 2015

License Number:	3391	Monitoring Frequency:	Twice per year (July and December)
Licensee:	RIX'S CREEK PTY. LIMITED	Sampling method:	72 hour continuous (LA10, 15 minute)
	PO BOX 4	Limits:	Nil
	EAST MAITLAND NSW 2323		
Premises:	RIX'S CREEK COLLIERY		
	RIX'S CREEK LANE		
	SINGLETON NSW 2330		

July	Published:	19 August 2015
	Sampled:	14/7/15 - 23/7/15
	Obtained:	18 August 2015

Location	Date	Start time	End time	Measurement period	Measured levels - dB(A)			Limit(s) - Under average conditions (neutral atmosphere) and not to inversion conditions	Comments	
					L10	L90	Leq		Observations	(Potential) non-compliance/breach
1 Singleton Heights	14/7/15 - 18/7/15	11:30	10:30	15 min Day	40.5 - 82	29 - 62	37.5 - 83.5	42	Mine operating 24 hours a day.	
				15 min Evening	38.5 - 62.5	34.5 - 45.5	38 - 59	42		
				15 min night	35.5 - 56.5	30.5 - 45	33 - 54.5	40		
2 Off Bridgeman Road (Retreat)	14/7/15 - 18/7/15	11:00	10:00	15 min Day	50.5 - 82	27 - 62	47 - 79	42	Mine operating 24 hours a day.	
				15 min Evening	40 - 66	28.5 - 44.5	39.5 - 62	42		
				15 min night	39.5 - 70.5	35 - 47.5	43.5 - 65	40		
3 Off Maison Dieu Road	20/7/15 - 24/7/15	12:45	14:30	15 min Day	37.5 - 60.5	28.5 - 53	38.0 - 57.5	38	Mine operating 24 hours a day.	
				15 min Evening	36.5 - 55	33 -46	35 - 53.5	38		
				15 min night	35.5 - 53.5	32 - 45.5	34 - 52.5	38		
4 Off the New England Highway, north of premises boundary (Camberwell)	20/7/15 - 24/7/15	13:30	15:15	15 min Day	50.5 - 61	40 - 54	46.5 - 63.5	n/a	Mine operating 24 hours a day.	
				15 min Evening	51.5 - 60	40.5 - 52.5	48.5 - 57.5	n/a		
				15 min night	48.5 - 66	36 - 55.5	45.5 - 62	n/a		

December	Published:	15 December 2015
	Sampled:	1/12/15 - 11/12/15
	Obtained:	14 December 2015

Location	Date	Start time	End time	Measurement period	Measured levels - dB(A)			Limit(s) - Under average conditions (neutral atmosphere) and not to inversion conditions	Comments	
					L10	L90	Leq		Observations	(Potential) non-compliance/breach
1 Singleton Heights	1/12/15 - 4/12/15	10:00	13:00	15 min Day	50 - 88	42.5 - 58.5	49.5 - 84.5	42	Mine operating 24 hours a day	
				15 min Evening	58 - 81	41 - 56.5	56.5 - 78.5	42		
				15 min night	39 - 78	32 - 54	38 - 77	40		
2 Off Bridgeman Road (Retreat)	1/12/15 - 4/12/15	10:15	12:45	15 min Day	55 - 73	36.5 - 72	53.5 - 72	42	Mine operating 24 hours a day. Retreat HVAS running on the 1/12/2015 from 10:15 - 24:00.	
				15 min Evening	42 - 72.5	36 - 71.5	43.5 - 72	42		
				15 min night	35.5 - 72	32.5 - 71	34 - 71	40		
3 Off Maison Dieu Road	7/12/15 - 11/12/15	10:00	13:00	15 min Day	52 - 89.5	41.5 - 67.0	49.5 - 85.5	38	Mine operating 24 hours a day	
				15 min Evening	51.5 - 84.0	42.5 - 54.5	49.0 - 81.0	38		
				15 min night	46.5 - 76.5	41.0 - 56.5	44.5 - 76.0	38		
4 Off the New England Highway, north of premises boundary (Camberwell)	7/12/15 - 11/12/15	10:15	13:15	15 min Day	47.0 - 68.5	38.5 - 52.0	44.0 - 68.0	n/a	Mine operating 24 hours a day	
				15 min Evening	45.5 - 57.0	37.5 - 48.0	42.5 - 57.5	n/a		
				15 min night	44.0 - 61.5	34.5 - 50.5	42.5 - 57.5	n/a		

1 SINGLETON HEIGHTS

5.1.3 RC3 – Rodd Close

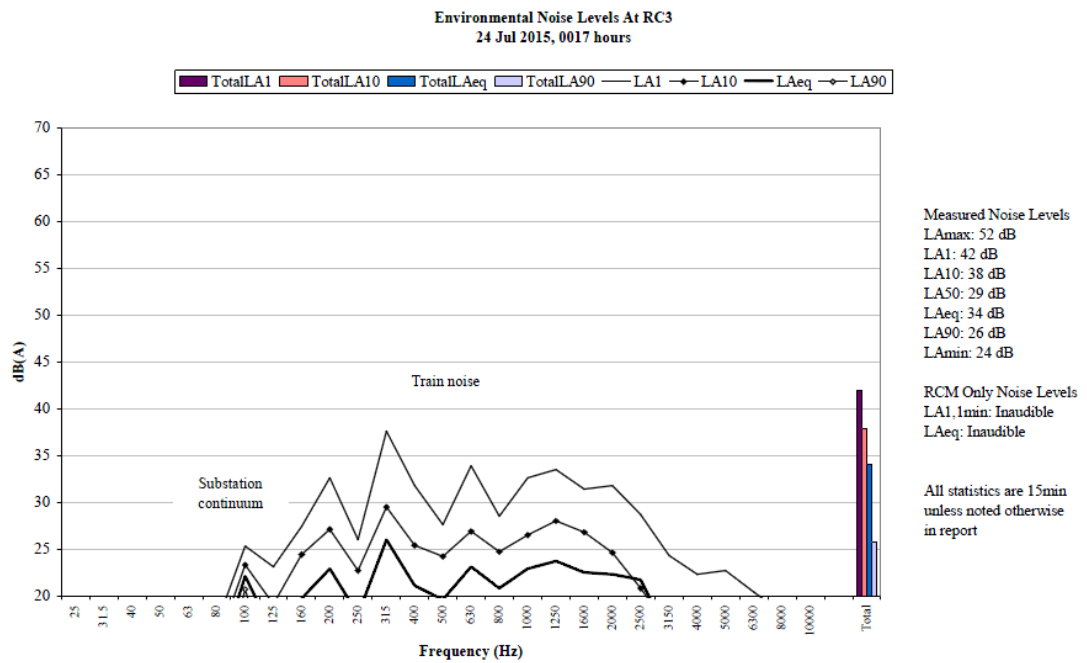


Figure 5: Environmental Noise Levels, Rodd Close

RCM was inaudible.

A train was primarily responsible for the measured LA1, LA10 and LAeq. A nearby substation continuum primarily generated the measured LA90.

Dogs, bats and road traffic tyre noise were also noted.

2 RETREAT

5.14 RC4 – Retreat Road

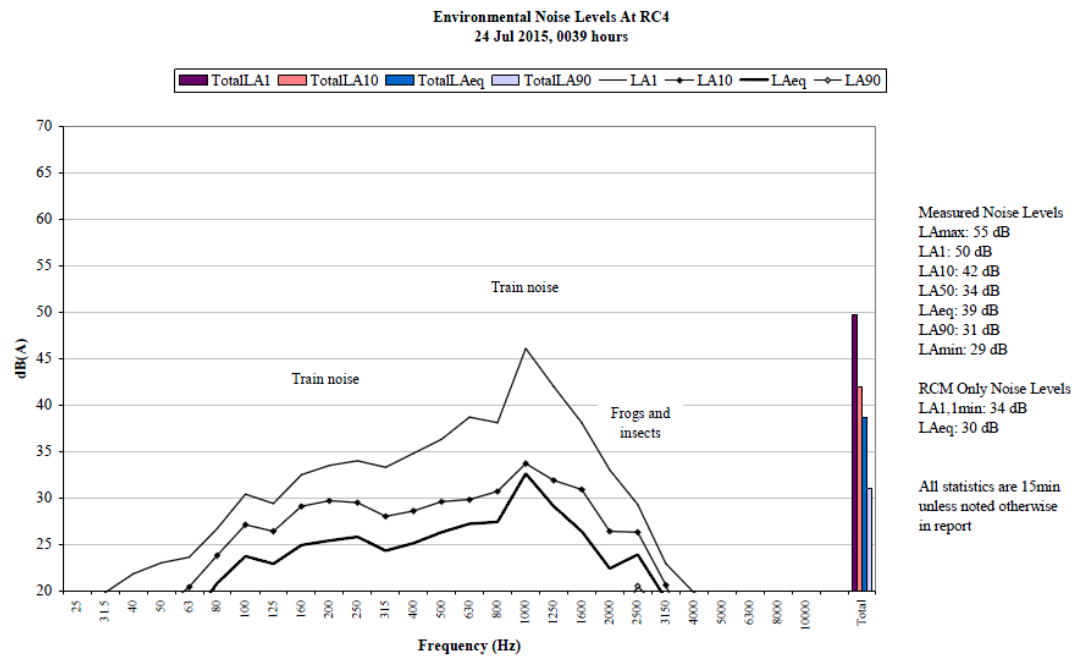


Figure 6: Environmental Noise Levels, Retreat Road

A continuum from RCM was audible throughout the measurement, generating the site only LAeq of 30 dB. A surge in the continuum generated the site only LA1,1minute of 34 dB.

A train primarily generated the measured LA1, LA10 and LAeq. The continuum from RCM was primarily responsible for the measured LA90.

Frogs and insects were also noted.

3 MAISON DIEU

5.1.2 RC2 – Maison Dieu Road

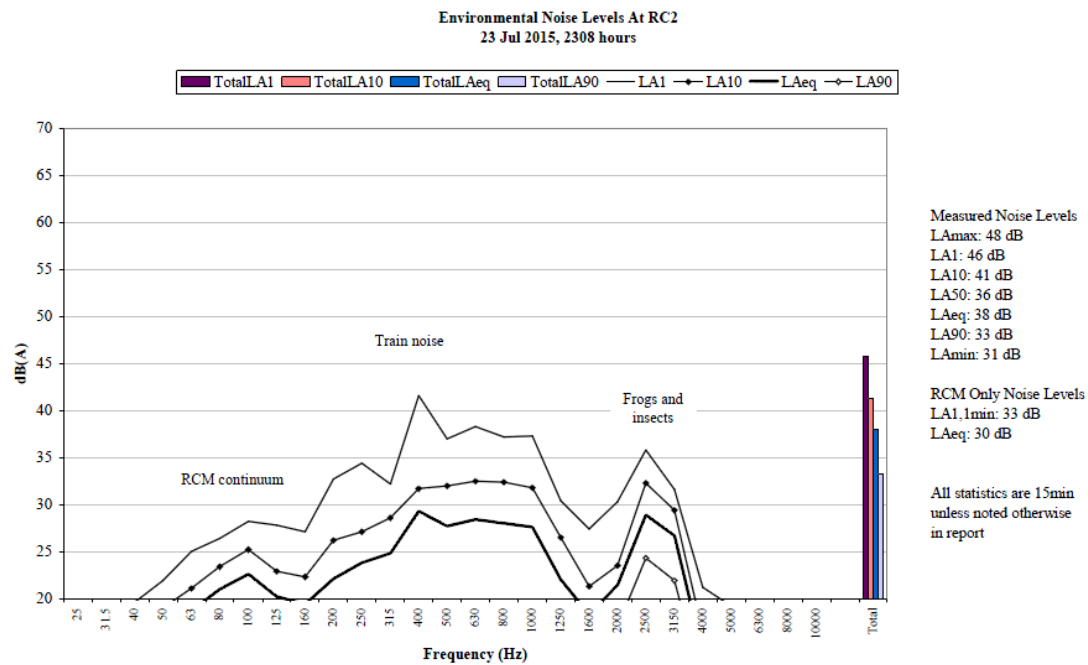


Figure 4: Environmental Noise Levels, Maison Dieu Road

A continuum from RCM was audible throughout the measurement, generating the site only L_{Aeq} of 30 dB and the site only L_{A1,1minute} of 33 dB.

A train primarily generated the measured L_{A1}, L_{A10} and L_{Aeq}. Frogs, insects and the continuum from RCM generated the measured L_{A90}.

Road traffic tyre noise was also noted.

4 CAMBERWELL

5.1.1 RCI – McInerneys Road

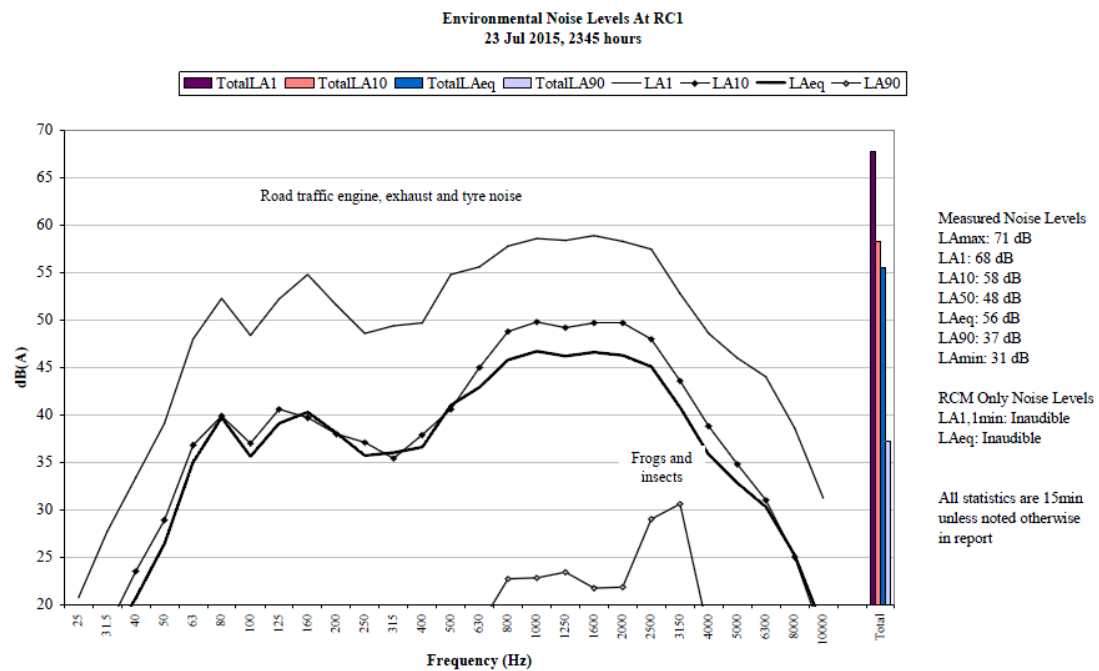


Figure 3: Environmental Noise Levels, McInerneys Road

RCM was inaudible.

Road traffic tyre, engine and exhaust noise generated the measured L_{A1}, L_{A10} and L_{Aeq}. Frogs and insects generated the measured L_{A90}.

A train was also noted.

1 SINGLETON HEIGHTS – DECEMBER 2015

5.1.3 RC3 – Rodd Close

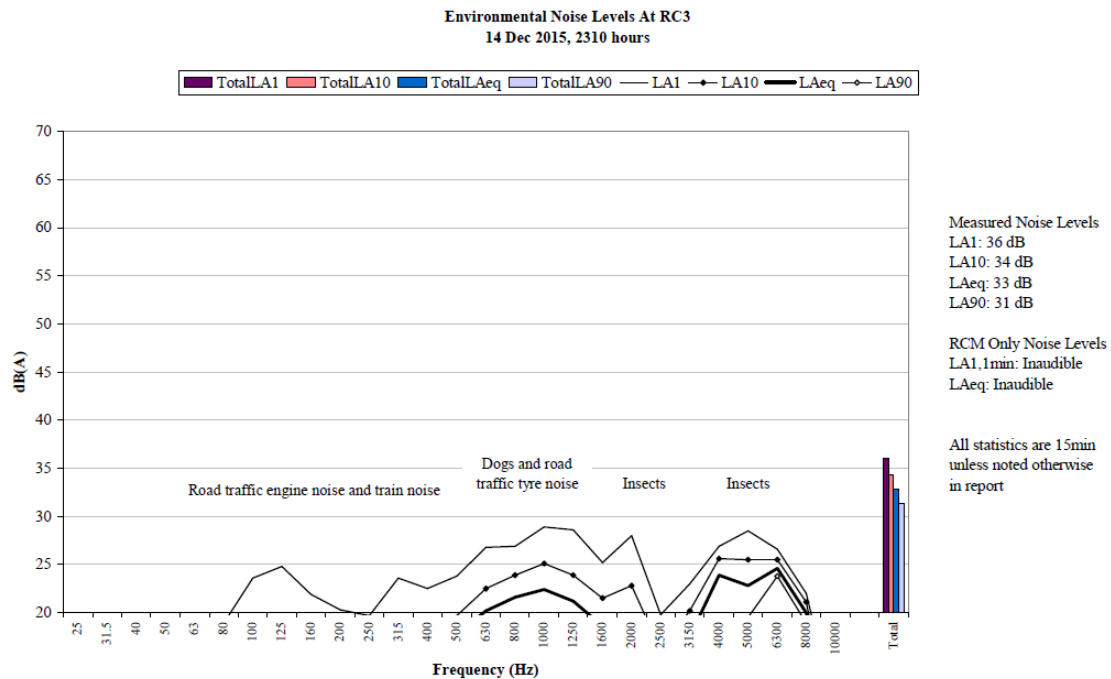


Figure 5: Environmental Noise Levels, Rodd Close

RCM was inaudible.

Road traffic tyre noise, dogs and insects generated the measured L_{A1} . Road traffic tyre noise and insects generated the measured L_{A10} , L_{Aeq} and L_{A90} .

Road traffic engine noise, train noise and frogs were also noted.

2 RETREAT – DECEMBER 2015

5.1.4 RC4 – Retreat Road

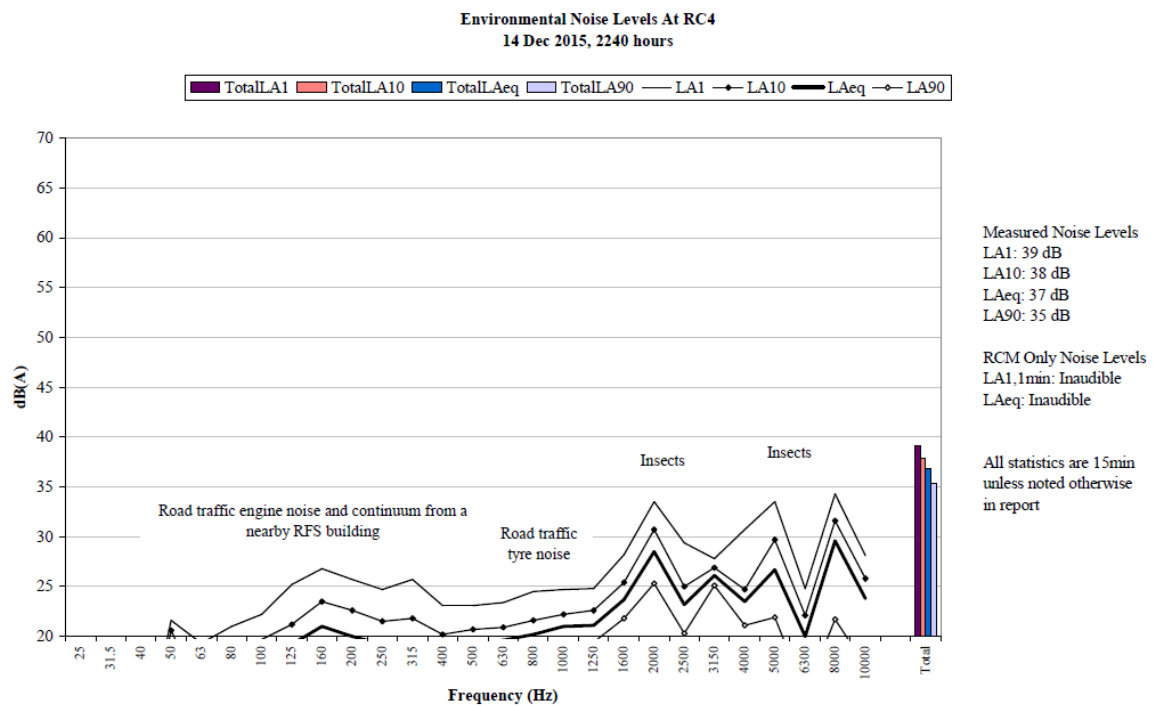


Figure 6: Environmental Noise Levels, Retreat Road

RCM was inaudible.

Insects primarily generated the measured levels.

A continuum from a nearby Rural Fire Services building, road traffic, dogs and birds were also noted.

3 MAISON DIEU – DECEMBER 2015

5.1.2 RC2 – Maison Dieu Road

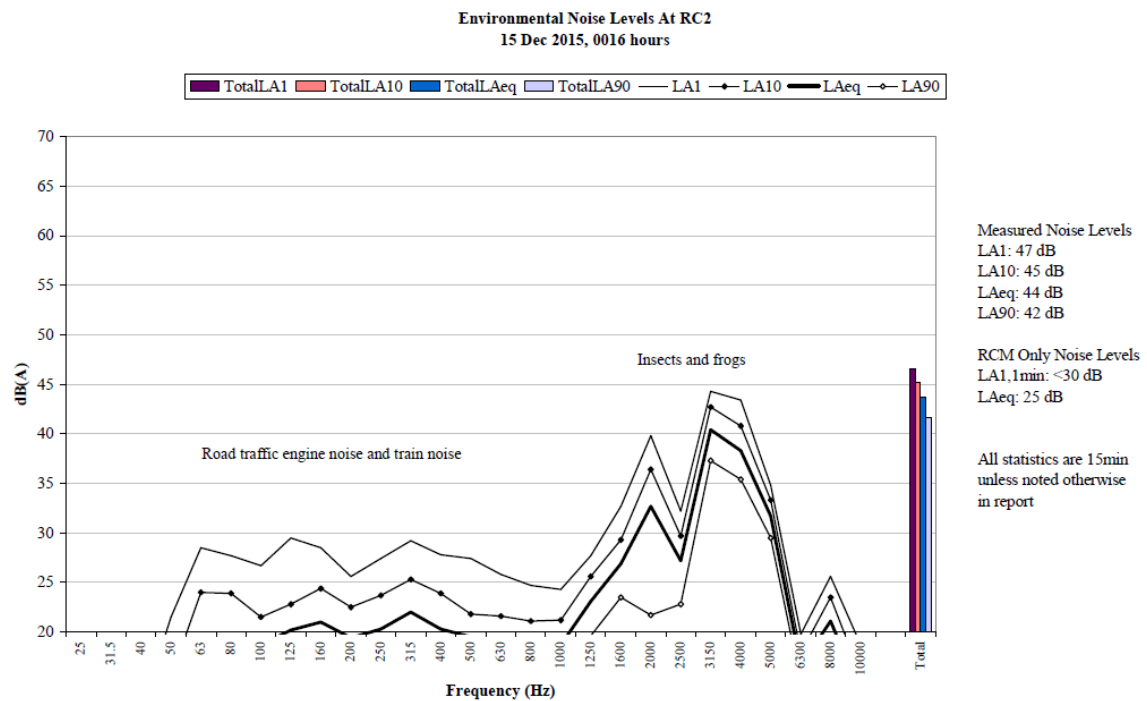


Figure 4: Environmental Noise Levels, Maison Dieu Road

RCM was audible as an engine continuum throughout the measurement, generating the site only LAeq of 25 dB and site only LA1,1minute of less than 30 dB.

Insects and frogs generated the measured levels.

Road traffic noise, birds and train noise were also noted.

4 CAMBERWELL – DECEMBER 2015

5.1.1 RC1 – McInerneys Road

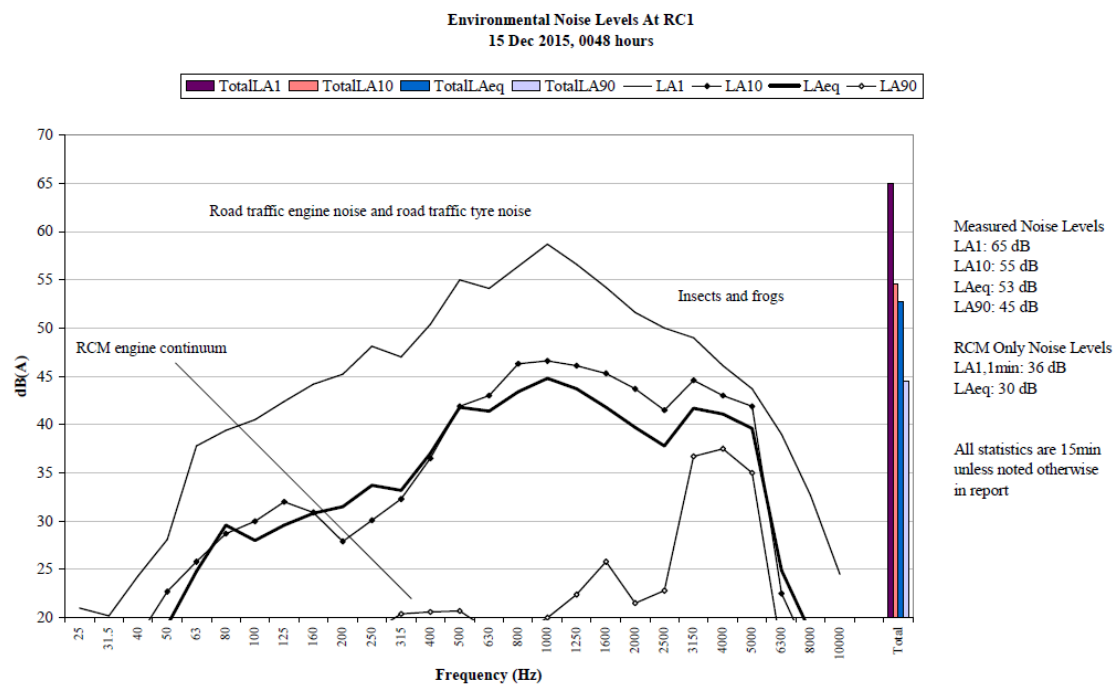


Figure 3: Environmental Noise Levels, McInerneys Road

RCM was audible at times as engine continuum, rear dump trucks and transmission whine, generating a site only LAeq of 30 dB. A surge in engine continuum generated the site only LA1,1minute of 36 dB.

Road traffic tyre noise generated the measured LA1 and primarily generated the measured LA10 and LAeq. Insects and frogs contributed to the measured LA10 and LAeq and generated the measured LA90.

Dogs and train noise were also noted.



Camberwell

4 Camberwell Noise

Bridgman

New England Hwy

Rixs Creek

2 Retreat Noise

Wattle Ponds

Dyrring

3 Maison Dieu Noise

Maison Dieu

Gouldsville

Long Point

1 Singleton Heights Noise

69

Singleton

Clydesdale

Gresford Rd

Golden Hwy

Data SIO, NOAA, U.S. Navy, NGA, GEBCO

© 2012 Whereis® Sensis Pty Ltd
Image © 2012 Sinclair Knight Merz

Google

32°31'15.54" S 151°08'09.99" E

Dec 16, 2008

Eye alt 11.73 mi