



**RIX'S CREEK COMMUNITY CONSULTATIVE
COMMITTEE MEETING**

MEETING 8/9/2015

- PRESENT:** Councillor - Val Scott. Community Representatives – Reg Eveleigh and Patricia Bestic.
- Company Representatives – Garry Bailey, Luke Murray, John Hindmarsh (Minutes), Jason Desmond.
- APOLOGIES:** NSW Planning & Environment – Chris Knight.
Community representative - Michelle Higgins.

Meeting commenced 9:00 am with site inspection.

1 AGENDA

Councillor Val Scott chaired the meeting.

2 PECUNIARY INTERESTS

The Bloomfield Group has purchased Vale – Integra Open Cut operation “Rix’s Creek North” and Glencore has purchased Vale – Integra underground operation. Rix’s Creek also have purchased the open-cut infrastructure such as CHPP and rail-loop as well as all equipment on site. Agreement will be in place for Bloomfield to wash Glencore’s underground coal and rail at that point in time.

Rix’s Creek intend on bringing the open-cut out of care and maintenance with production starting at a modest scale sometime in the near future (predicted to be 2016). Work needs to be done with mining license, development consent, EPA Environmental Protection License, etc prior to production occurring.

3 PREVIOUS MINUTES

Minutes of meeting 12/05/2015 Accepted. Moved Patricia Bestic Seconded Reg Eveleigh.

4 BUSINESS ARISING.

Nil.

5 PRESENTATION OF ENVIRONMENTAL MONITORING REPORT.

SUMMARY

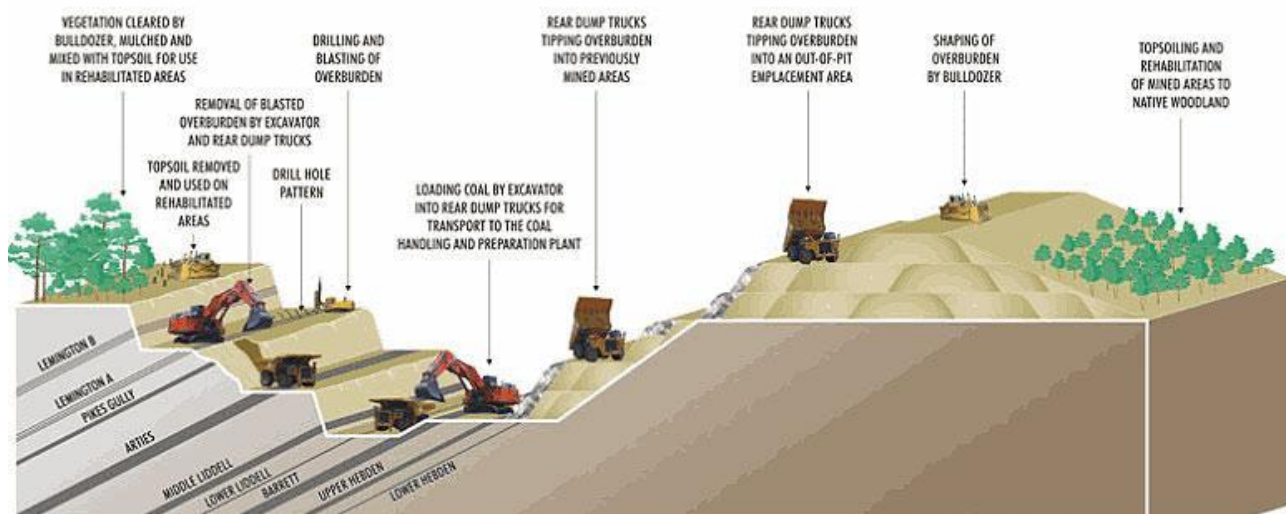
- Go over environmental monitoring results for the period January to end June 2015 for Rix's Creek (RC).

ACTIVITY

- Operations continuing in Pit 3 (West Pit) which is focus of operation and dumping in Pit 1 (North Pit). Liebherr R9800, Hitachi EX5500 excavator two main digging units with Hitachi 3600 excavator used on an "as needs" basis.



- Bench style sequence of stripping / blasting / mining / dumping / shaping / rehabilitation remained in place during 2015 and this will continue.



Production for the six months to the 30th June 2015 was:-

Overburden removed	6.56 million BCM
Run-of-mine coal	1,348,409 t
Clean coal	754,185 t

- Rix's Creek production level limit was previously 15 million bank cubic metres (bcm) of total material movement per year – following the higher than expected movement of overburden with the R9800 and a drier than average year in 2014, approval was granted to increase the limit to 16.1 million bank cubic metres. Due to the high rainfall month of April 2015 this limit is unlikely to be reached during the 2015 calendar year.
- Main changes across site for the first half of 2015 include some further advancement in the West Pit pre-strip area and the progression of the out-of-pit overburden emplacement ahead of Pit 3 (Western area).

AIR QUALITY

Insoluble solids deposition results.

- The year to date average of all of the gauges from January to June is 1.7 g/m²/month, which is slightly lower (~6%) than the 2014 January to June average of 1.8 g/m²/month.
- Gauges 26 (5.5 g/m²/mth) exceeded the annual average deposition limit of 4 g/m²/mth. Gauge 26 is located within close proximity to the operation (approximately 20 m from active haul road) and will need to be relocated during 2015.

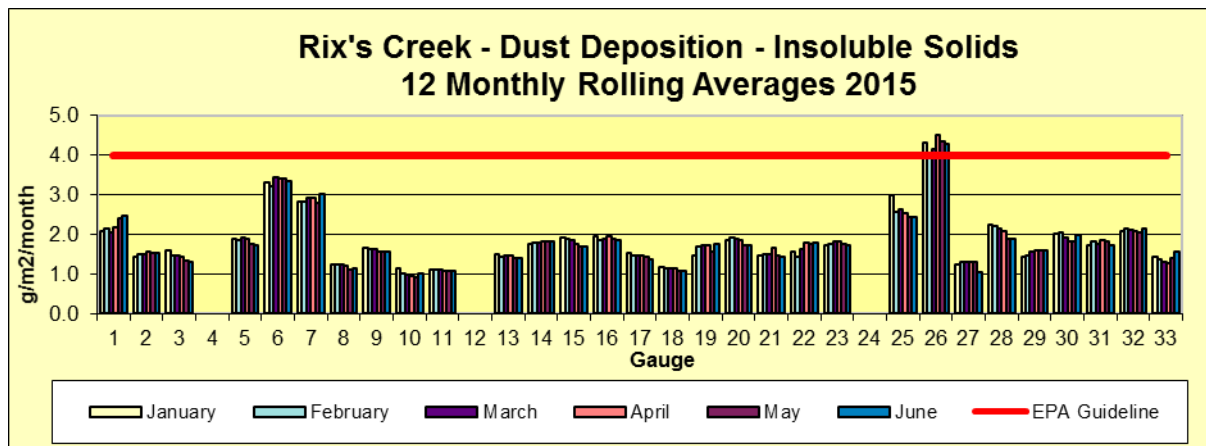


Figure 1 Dust Deposition (Insoluble Solids) 12 monthly rolling averages.

Gauges 6, 7 and 26 show elevated results over a 12-monthly rolling average and this is similar to previous years.

Total Suspended Particulates

- All sites below annual limit: 90 ug/m³
- The Retreat site recorded 6 runs and the Rix's Creek site 4 runs over the annual average limit of 90 ug/m³. Results for 2015 to date have been slightly lower to that of 2014 and 2013 showing a decreasing trend.

Year to date geomeans are:-

- Rix's Creek - 44 ug/m³ down from 48 ug/m³ last year's average
- Mines Rescue - 37 ug/m³ down from 40 ug/m³ last year's average
- Retreat - 43 ug/m³ down from 55 ug/m³ last year's average

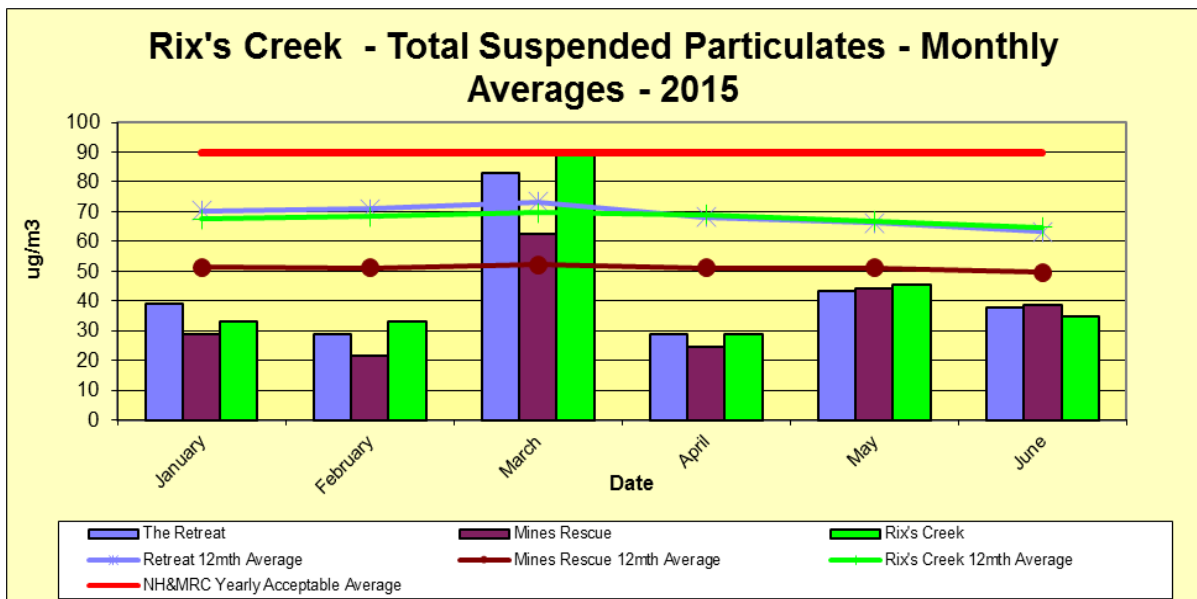


Figure 2 Total Suspended Particulates Monthly Averages & 12 Monthly Rolling Averages.

12 monthly average all similar to 2014 monthly average results. Higher results in March being a dry month.

Particulate Matter less than 10 micron.

- All sites below annual limit of 30 ug/m³ on a twelve monthly rolling average.
- One result > 50 ug/m³ maximum daily goal at Rix's Creek site in March – results is maximum allowed. This result is seen in Figure 3.

Year to date averages are:-

- Rix's Creek 20 ug/m³ – last yearly average 23 ug/m³
- Mines Rescue Station 16 ug/m³ – last yearly average 19 ug/m³
- Retreat 16 ug/m³ – last yearly average 21 ug/m³

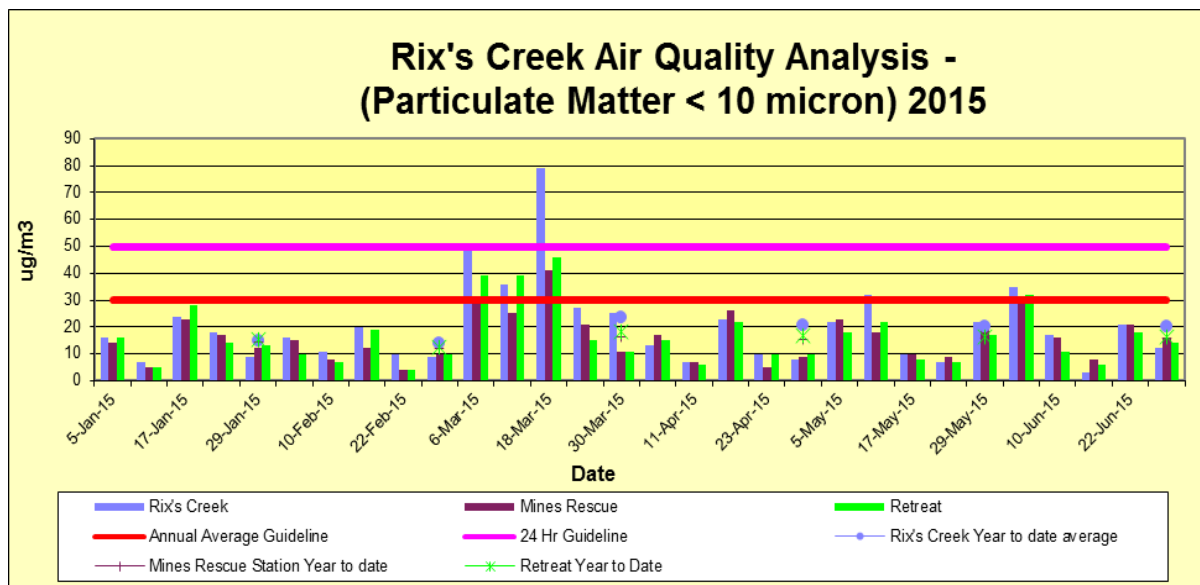


Figure 3 Particulate Matter < 10 Micron year to date

- No complaints were received in relation to air quality during the period.

WATER QUALITY

- Sufficient flows to Rix’s Creek during April and May due to heavy rainfall during April.
- pH minimal change across all sites.
- Salinity levels increased throughout the year aligned to minimal flow and dry conditions.
- Total dissolved solids mirrors salinity.
- Total suspended solids – decreased with minimal flow and dry conditions.

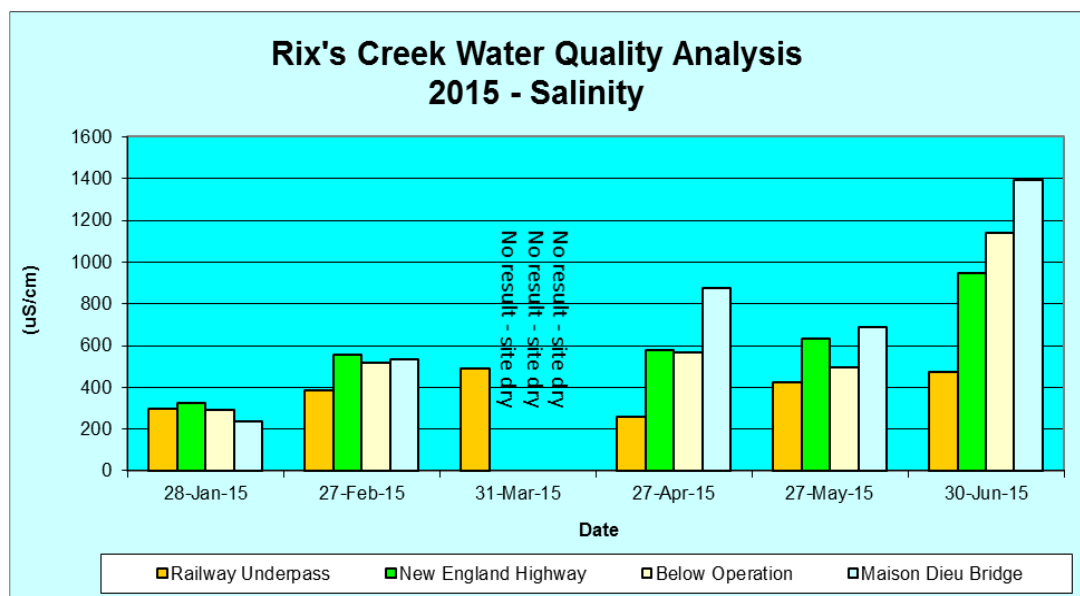


Figure 4 Rix’s Creek – Salinity

Results were similar to previous years. Salinity increased with dry conditions during May and June.

- No complaints regarding water management.
- One incidents regarding water quality in April with water leaving site due to high rainfall event. Water samples taken following event with no environmental harm found. Sediment dams cleaned across site during July – August 2015. Water expert reviewed incident and recommendations to be implemented.

NOISE MONITORING

- Quarterly noise monitoring conducted as per development consent via third-party consultant.
 - 1st Quarter results (undertaken by third-party consultant):
 - Retreat – audible and measureable – trucks on ROM Pad (below limit);
 - Maison Dieu – not audible;
 - Singleton Heights – audible but not measureable; and
 - Camberwell – audible but not measureable.
 - Five complaints – 14/1/2015, 4/3/2015, 16/3/2015, 25/3/2015 and 29/3/2015.
 - 2nd Quarter results (undertaken by third-party consultant):
 - Retreat – audible and measurable – trucks on ROM Pad (below limit);
 - Maison Dieu – Mining noise audible on several occasions and measurable (below limit);
 - Singleton Heights – not audible; and
 - Camberwell – not audible.
 - Two complaints – 8/6/2015 and 15/6/2015.

Both quarter's had nil exceedances as per RC Project Specific Noise criteria.

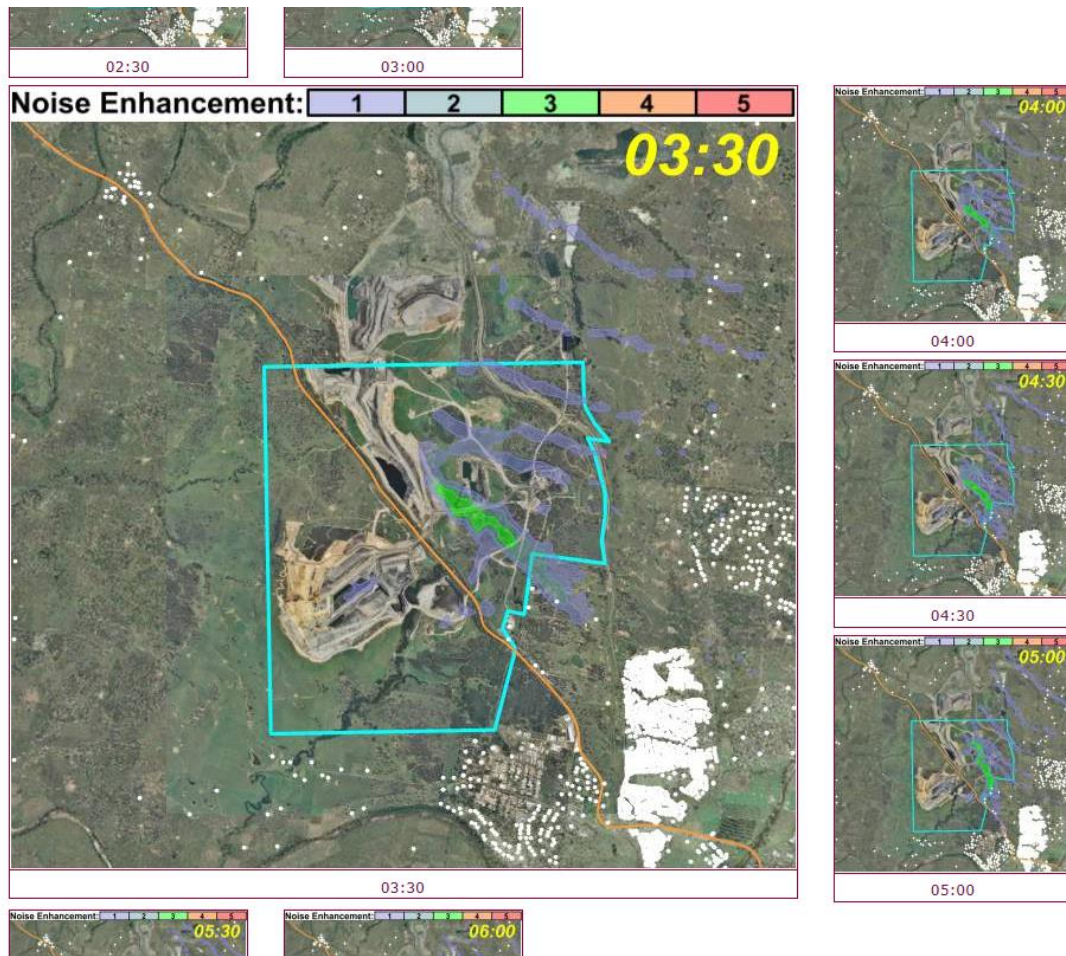
- Monthly noise monitoring conducted as per PRP and proactively via third-party consultant.
- Nightly attended noise monitoring conducted by Rix's Creek personnel in line with site 3D predictive noise model.
- Noise improvements: 3D Predictive noise model effectively predicting noise enhancement for night. Calibration by Graduate environmental student and directing OCE from off-site via noise monitoring at area's expected to experience noise (not ideal) TARP (Trigger Action Response Plan) has been developed for this.

QUESTION:- Does Rix's Creek have any noise complaints from Camberwell now Vale – Integra isn't operating?

Yes, some noise complaints (three out of seven) have been received during January-June from the one complainant with two occasions the mine was not operating over the week-end.

QUESTION:- Does any other mine sites in the Hunter Valley use the 3D Predictive noise model?

No, Rix's Creek had the model specifically set-up for this site, however, some other sites use their own personnel to conduct off-site attended noise monitoring and have for some years.



3D Predictive noise model for Rix's Creek

METEOROLOGICAL

At the end of June total rainfall was 591.5 mm which was 214.5 mm above average. This time last year we were 65.75 mm below average highlighting the vastly different weather patterns. January and April were the only months to receive excessive rainfall with April well past its monthly average due to the 'super storm'.

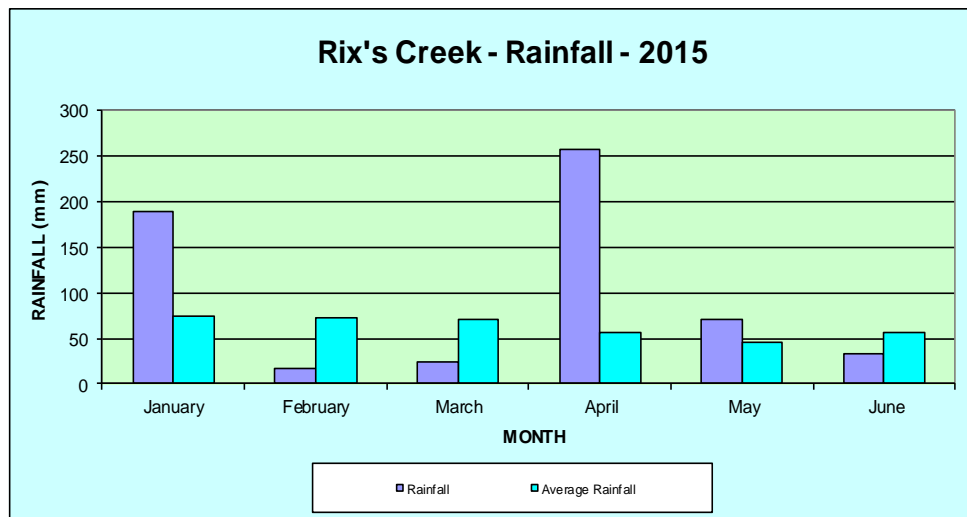


Figure 5 Rainfall

Winds were similar to previous years with January-March being under a SE influence, April being a transition period from SE to NW and May to June being under a NW influence.

BLASTING

- 52 production blasts with all in Pit 3 (West Pit).
- One blast recorded overpressure > 115 dB_{Linear} but < 120 dB_{Linear} being 115.2 dB_{Linear} at Retreat 28/5/2015.
- No blast exceeded 5 mm/sec vibration.
- 41 blasts this year already cancelled due to weather conditions (majority wind speed / wind direction under NW influence).

Complaints.

Two complaints received in relation to blasting (same complainant for two separate blasts) on the 23/6/2015 and 24/6/2015. Both blasts were related to overpressure.

Further improvements – new blast meter installed near Singleton council chambers August 2015 to reference any potential blast impacts on Singleton CBD. Blast dust / fume model improved to include temperature inversion effects on blasting up to 1000 m of altitude.

QUESTION:- Why can't Rix's Creek blast under a southerly compared to a south-easterly wind pattern?

Due to potential blast dust/fume impacts on the New England Highway, however, the site has a Road Occupancy License from RMS and personnel trained in traffic control to shut the highway if required. The highway is also closed for any blasting within 500 m of the New England Highway as per development consent condition.

REHABILITATION

Several areas were shaped to final landform, topsoiled and prepared for final rehabilitation during January to June. Biosolids was incorporated into the topsoil as per previous years. The pasture areas rehabilitated on the North Pit Dump totalled 6 ha. Rehabilitation is to continue throughout July to September with focus to complete the West Pit rehabilitation, West Pit out-of-pit-dump and North Pit 9-ways rehabilitation areas.

4900 Tubestock were planted along the New England Highway, North Pit dump and ROM Pad noise bund during April.

Several areas on the North Pit dump were tree seeded during March totalling 12.5 ha.

Approximately 5.5 hectares of previous pasture rehabilitation on Pit 1 (North Pit) was mulched to promote species diversity and soil improvement. This area was also rock-rolled (via a tractor and drum-roller) to break-down surface rocks, press larger rocks into the surface and flatten high-standing pasture so weed management could be conducted more effectively especially to low ground cover weeds such as *galenia pubescens*.

RIX'S CREEK MINE COMMUNITY CONSULTATIVE COMMITTEE MEETING MINUTES – 8/09/2015

A pasture area on the North Pit dump was re-seeded totalling 7 ha. This area also had any surface rocks removed, erosion rills repaired and re-filled with topsoil.

OTHER

QUESTION:- Are the water release recommendations in the Appendix complete?

Partly complete – vegetation has been removed from the drains that blocked up during the storm and a new dam design with larger capacity / freeboard has been designed. Awaiting dry period of weather to do the required dam wall works. Pumps also have their automated trigger levels lowered for more freeboard, however, water in rail loader dams are crucial for any rail loader tunnel fire / dust suppression as it is the water source used.

QUESTION:- What is happening with the Parklands Motel?

The motel has been partly disassembled with the remaining parts renovated and rented to the Wonnarua people to use as a training facility with cooking facilities, good grounds, etc.

QUESTION:- Did you know about the old underground workings ahead of the West Pit (West Pit pre-strip) seen on the site inspection this morning?

No. No survey information for this area or any evidence on maps of previous workings. The workings were quite old with timber supports evident through the coal and only shallow, short tunnels. The previous underground workings in the North Pit and South Pit are quite well detailed when Rix's Creek open-cut mined these areas in the past.

RIX'S CREEK CONTINUATION PROJECT - UPDATES

- EIS to be submitted for adequacy September 2015.
- Economic and social impacts looked at for increase in labour force.
- Noise - ongoing. Most amount of noise from project is the period now with noise reduced as operation moves away from Singleton. Noise attenuation strategy for new equipment. Predictive noise model to be continued.
- Mine Design & Geotechnical to be reviewed for final landform design.

- Another meeting will be organised with CCC and stakeholders once EIS is submitted.

GENERAL BUSINESS

Nil

NEXT MEETING/S:- May 2016 @ 10 am TBC: Presentation of Annual Environmental Management Report for 2015 or EIS Briefing Meeting TBC.

Meeting Closed 12:05 pm.