

AIR QUALITY RESULTS 2014 # 2

License Number: 3391
Licensee: RIX'S CREEK PTY. LIMITED
 PO BOX 4
 EAST MAITLAND NSW 2323
Premises: RIX'S CREEK COLLIERY
 RIX'S CREEK LANE
 SINGLETON NSW 2330

Monitoring Frequency: Every 6 days
Sampling Method: AM-15
Limits: 90 ug/m³ annual average limit
Pollutant: Total Suspended Particulates
Units of measure: ug/m³

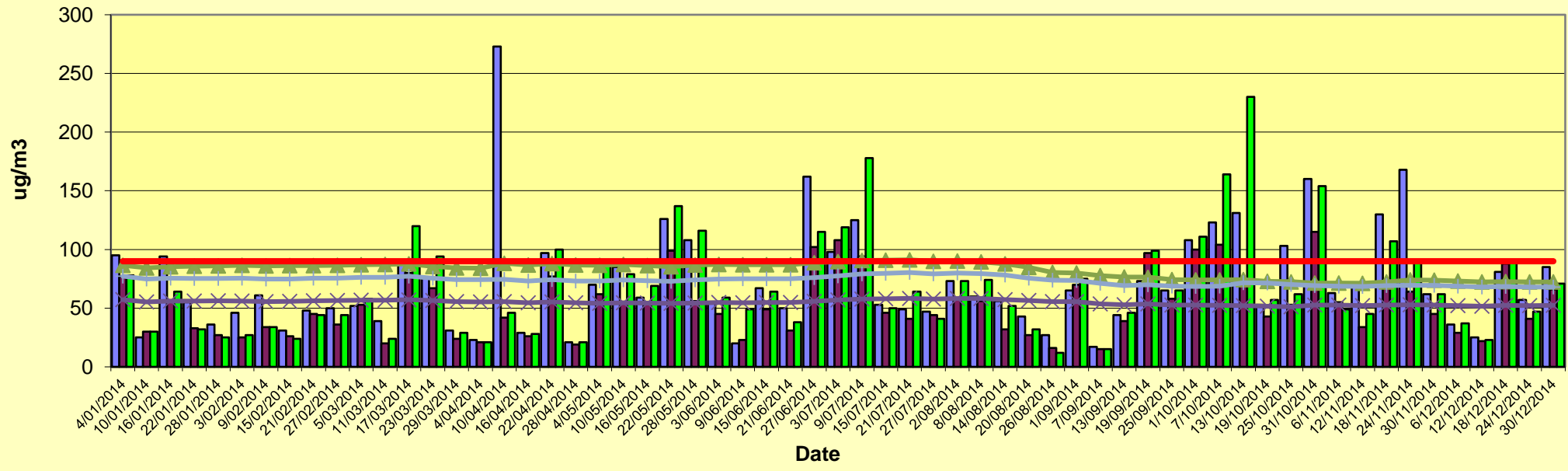
	Sampling Date	Retreat	Retreat Rolling Annual Average	Mines Rescue	Mines Rescue Rolling Annual Average	Rix's Creek	Rix's Creek Rolling Annual Average	Annual average limit
Published: 14 February 2014 Sampled: 22 January 2014 Obtained: 12 February 2014	4/01/2014	95	87	77	57	78	77	90
	10/01/2014	25	84	30	55	30	75	90
	16/01/2014	94	85	56	56	64	75	90
	22/01/2014	55	86	33	56	32	75	90
Published: 19 March 2014 Sampled: 21 February 2014 Obtained: 12 March 2014	28/01/2014	36	86	27	56	25	75	90
	3/02/2014	46	86	25	56	27	76	90
	9/02/2014	61	86	34	56	34	75	90
	15/02/2014	31	86	26	56	24	75	90
	21/02/2014	48	86	45	56	44	75	90
Published: 15 April 2014 Sampled: 23 March 2014 Obtained: 15 April 2014	27/02/2014	50	87	36	56	44	76	90
	5/03/2014	52	87	53	57	58	76	90
	11/03/2014	39	87	20	57	24	76	90
	17/03/2014	88	88	80	57	120	77	90
	23/03/2014	76	86	67	57	94	76	90
Published: 20 May 2014 Sampled: 22 April 2014 Obtained: 12 May 2014	29/03/2014	31	84	24	56	29	74	90
	4/04/2014	23	84	21	55	21	74	90
	10/04/2014	273	88	42	56	46	75	90
	16/04/2014	29	87	26	54	28	73	90
	22/04/2014	97	88	77	55	100	74	90
Published: 13 June 2014 Sampled: 22 May 2014 Obtained: 12 June 2014	28/04/2014	21	87	19	54	21	73	90
	4/05/2014	70	86	62	54	89	73	90
	10/05/2014	85	87	54	55	79	74	90
	16/05/2014	59	86	54	54	69	73	90
	22/05/2014	126	85	99	54	137	73	90
Published: 16 July 2014 Sampled: 21 June 2014 Obtained: 11 July 2014	28/05/2014	108	87	56	54	116	74	90
	3/06/2014	55	87	45	55	59	75	90
	9/06/2014	20	87	23	55	49	75	90
	15/06/2014	67	87	49	55	64	75	90
	21/06/2014	50	87	31	55	38	75	90
Published: 19 August 2014 Sampled: 21 July 2014 Obtained: 18 August 2014	27/06/2014	162	89	102	56	115	76	90
	3/07/2014	98	90	108	57	119	77	90
	9/07/2014	125	91	94	58	178	79	90
	15/07/2014	53	91	46	58	50	80	90
	21/07/2014	49	91	41	58	64	80	90
Published: 18 September 2014 Sampled: 20 August 2014 Obtained: 11 September 2014	27/07/2014	47	90	44	58	41	79	90
	2/08/2014	73	90	58	58	73	80	90
	8/08/2014	60	89	56	58	74	79	90
	14/08/2014	56	88	32	57	52	78	90
	20/08/2014	43	85	27	56	32	76	90
Published: 16 October 2014 Sampled: 25 September 2014 Obtained: 16 October 2014	26/08/2014	27	81	16	55	12	74	90
	1/09/2014	65	80	70	56	75	74	90
	7/09/2014	17	78	15	54	15	71	90
	13/09/2014	44	76	39	53	46	69	90
	19/09/2014	73	76	97	54	99	70	90
Published: 13 November 2014 Sampled: 25 October 2014 Obtained: 12 November 2014	25/09/2014	65	74	58	53	65	69	90
	1/10/2014	108	74	100	53	111	68	90
	7/10/2014	123	74	104	53	164	69	90
	13/10/2014	131	74	72	52	230	72	90
	19/10/2014	53	73	43	52	57	71	90
Published: 8 December 2014 Sampled: 24 November 2014 Obtained: 5 December 2014	25/10/2014	103	73	53	51	62	70	90
	31/10/2014	160	71	115	53	154	69	90
	6/11/2014	63	71	55	53	49	69	90
	12/11/2014	70	71	34	52	45	68	90
	18/11/2014	130	72	69	53	107	69	90
Published: 13 January 2015 Sampled: 30 December 2014 Obtained: 13 January 2015	24/11/2014	168	74	64	53	90	69	90
	30/11/2014	62	74	45	53	62	69	90
	6/12/2014	36	73	29	52	37	69	90
	12/12/2014	25	72	22	52	23	68	90
	18/12/2014	81	73	88	52	91	68	90
	24/12/2014	57	72	41	52	47	68	90
	30/12/2014	85	72	66	52	71	68	90

Minimum	17
Average	72
Maximum	273

15
52
115

12
68
230

Rix's Creek - Total Suspended Particulates 2014





Rix's Creek – High Volume Air Sampler Location Diagram.