

Rix's Creek Continuation of Mining Project

Project Newsletter October 2014

Rix's Creek Mine

The Rix's Creek Mine is an open cut coal mine 5km north-west of Singleton. It has been in continuous operation since 1990. It currently produces 2.8 million Run of Mine tonnes per annum and employs 130 people – mostly locals. The mine is part of the Bloomfield Group which is 100% Australian family-owned and Hunter Valley based.

Continuation of Mining Project - Update

We're seeking approvals to continue operations for the next 21 years, which would see the mine gradually continue its westward shift away from Singleton. Since our last newsletter in April we've been busy overseeing a broad range of technical studies to ensure this can happen in a commercially, environmentally and socially acceptable manner. It's our intention that the community will notice very few changes.

Stakeholder Consultation

Consultations are ongoing. That includes briefings and dialogue with the Rix's Creek Community Consultative Committee, Singleton Council and numerous government agencies. This is so we can get the best possible feedback and continue operations in a manner agreeable to everyone interested in what we're doing.

Noise and Air quality Management

Rix's Creek uses real time weather data and predictive modelling so that blasting and overburden activity happens in a manner that's acceptable to the community. Significantly, we're now looking at advanced predictive noise modelling to give us even better control over on-site noise.

Biodiversity Approach

Our biodiversity strategy has been covered under the Upper Hunter Strategic Assessments - a joint initiative of the NSW and Commonwealth Government's - which ensures that

important mining biodiversity issues are properly identified and funded. This puts an onus on us to contribute to a pool of funds which the NSW Office of Environment and Heritage draws from to progress broad local environmental initiatives under the Upper Hunter Biodiversity Plan.

Non-Strategic Agricultural Land

After thorough assessments, The NSW Department of Planning and Environment (DP&E) has concluded that our mine lease continuation areas are not Biophysical Strategic Agricultural Land (BSAL), meaning the land isn't agriculturally significant. This takes us several steps closer to having our Environmental Impact Statement put on public exhibition and assessed by the NSW Government. Details can be found on the DP&E website at:

http://majorprojects.planning.nsw.gov.au/index.pl?action=view_job&job_id=6636

Environment Protection Biodiversity (EPBC) Act Referral

Projects likely to have impacts on ecology and groundwater are subjected to rigorous assessment under the Commonwealth Government's EPBC Act. Although our proposal is likely to have negligible ecology and groundwater effects, we'll still refer all relevant documentation to the Commonwealth, in the interests of being transparent and thorough.

What Happens Next?

Our technical reports are nearing completion and will be summarised in our draft Environmental Impact Statement (EIS). The draft EIS will be submitted to DP&E in the near future and be scrutinised as part of an adequacy review. Once this is satisfied, the completed EIS will be put on public exhibition.

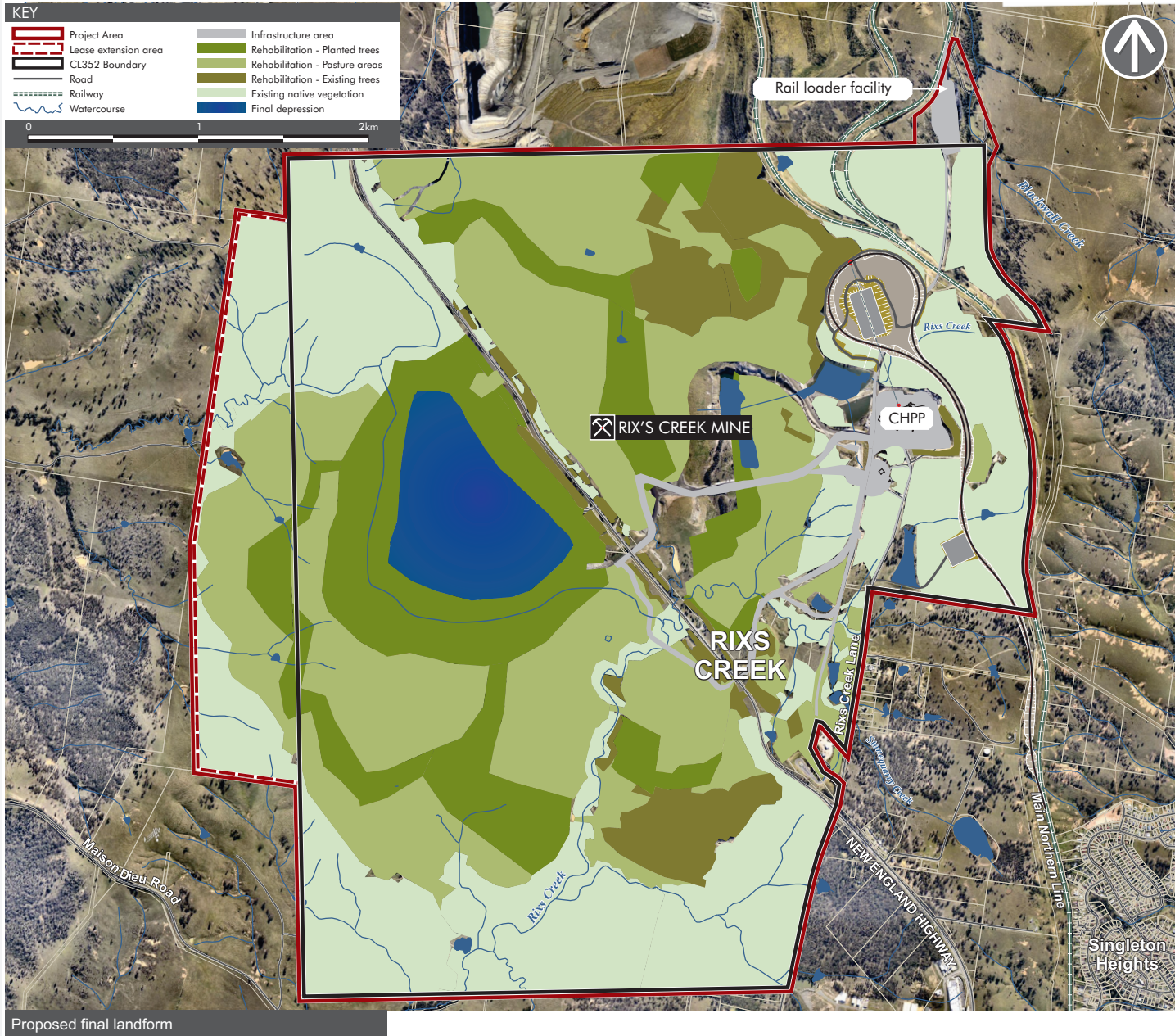


NSW Trade and Investment, Division of Resources and Energy: Rehabilitated Land Field Inspection

Final Landform


The revised final landform is presented below. It ensures there are no unrehabilitated highwalls at the conclusion of the project and the final landforms will allow pre-mining land uses to continue. All landforms will be treed or planted to pastures. Drainage patterns will be designed to ensure that maximum surface runoff returns to natural waterways.

The rehabilitated area will complement treed wildlife corridors associated with the McDougall Business Park in the south and remnant Iron Bark and Spotted Gum vegetation on the Rix's Creek site to the north.




Key Project Contacts

Garry Bailey
General Manager Mining Development

 0407 938 003

 gbailey@bloomcoll.com.au

John Hindmarsh
Senior Environmental Officer

 0427 436 285

 jhindmarsh@bloomcoll.com.au


Communication and Information

We welcome your questions and comments about the Rix's Creek Continuation of Mining Project, as part of the ongoing stakeholder and community consultation.

You can access further information via the Bloomfield group website, or by using the details below.

 www.bloomcoll.com.au/operations

 info@bloomcoll.com.au

 PO Box 4, East Maitland NSW 2323