

Rix's Creek Continuation of Mining Project

Project Newsletter March 2014

Rix's Creek Mine

Rix's Creek Mine (the Mine) is owned and operated by The Bloomfield Group, a 100% Hunter Valley based Australian family-owned mining company. Rix's Creek Mine has been in continuous operation since 1990.

The Mine is an open cut coal mine approximately 5 km north-west of Singleton which currently produces approximately 2.8 million tonnes per annum (Mtpa) of Run of Mine Coal.



Existing Mine Infrastructure Area

Community and Environmental Track Record

The initial Rix's Creek Mine plan was formulated to mine those areas of the resource closest to the populated area of Singleton first, thus developing a system of rehabilitated mine buffers between mining operations and the expanding township. This project will enable Rix's Creek Mine to continue this community sensitive method while mining areas that are advancing to the west, away from the population areas of Singleton.

The Rix's Creek Community Consultative Committee (CCC) was established 23 years ago and continues to operate in a constructive and collaborative manner through an open dialogue with members of the community and Singleton Council.

The Bloomfield Group, has maintained a strong environmental conscience with a vigilant approach to best practice mining operations at both the East Maitland and Rix's Creek Mine sites. The company has always been proud to stand by its track record and conducts operations in a transparent and regulatory compliant manner. Reporting of environmental performance takes place annually in the Annual Environmental Management Report and also with independent environmental audits of the operation being conducted under the current development consent. Rix's Creek Mine ensures rehabilitation is undertaken progressively when mining in an area is complete, employing a variety of methods that complement the surrounding landscape.

The Bloomfield Group and Rix's Creek Mine have a history of committing to innovative programs to manage environmental impacts and enhance rehabilitation results, including:

- Real time dust measurement,
- Predictive modelling to reduce:
 - Blast vibration,
 - Blast fume and dust generation
 - Mine noise generation
- Water conservation
- Developing rehabilitation techniques specific to the existing environment
- A tailings drying project to reduce reliance on Tailings Dams

The Project

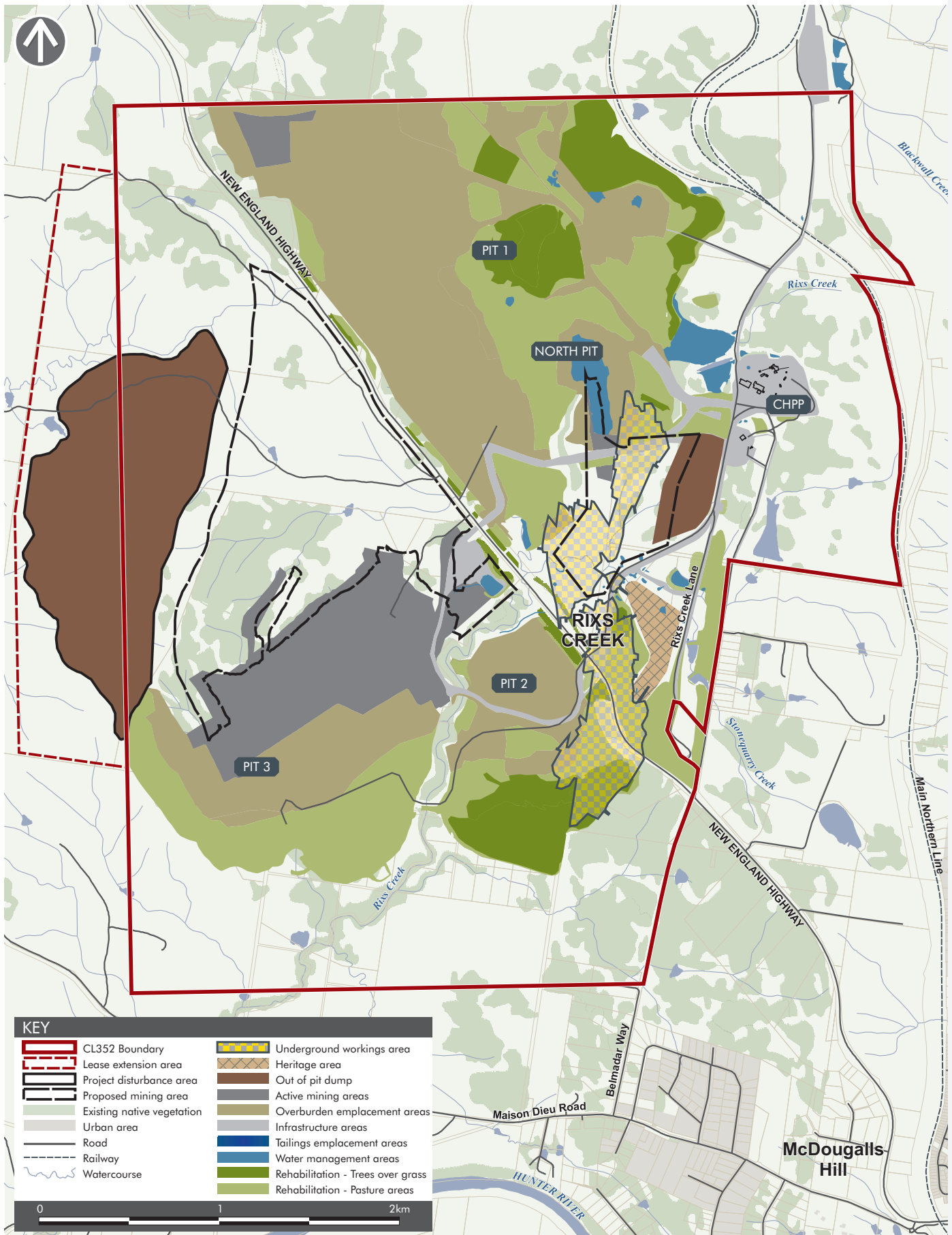
The Bloomfield Group is seeking approval for the Rix's Creek Continuation of Mining Project. This Project relates to the ongoing operation of the open cut coal mine, including infrastructure and other mining and related activities across the mine. The proposed Project will allow the Rix's Creek Mine to continue to operate as an open cut mine, accessed via its existing infrastructure and facilities for the 21 year period of this project. It will enable production levels to meet our current shipping targets of 2.8 million tonnes of Run of Mine (ROM) coal for the majority of the project life. For several years, production could increase up to 4.5 million tonnes ROM if and when required to meet shipping schedules. All environmental studies are being carried out to ensure those increased production periods still maintain operation with acceptable environmental impacts. The project will facilitate optimum extraction of the coal resource at this site through the existing operations and infrastructure.

Mining methods will be similar to those currently undertaken at the existing mine, reflecting the Company's commitment to innovation, effective mining and rehabilitation.

The Project includes an extension of the emplacement area on land owned by the proponent to the west of the current Mining Lease. This extension has been identified to assist with the rehabilitation management, mitigation of noise, dust and visual impacts from the mining operation. The extension will require a Mining Purposes Lease to be created over the area

Project Environmental Assessment

The Project is in the initial stages of the Environmental Impact Assessment (EIS) and planning process. In late 2013 Rix's Creek Mine submitted a Preliminary Environmental Assessment (PEA) to the NSW Department of Planning and Infrastructure (DP&I). A Planning Focus Meeting was held in late January



2014 allowing DP&I to receive feedback from government agencies on their requirements for the environmental assessment.

The key steps in the environmental assessment and approvals process are outlined in the adjoining flowchart.

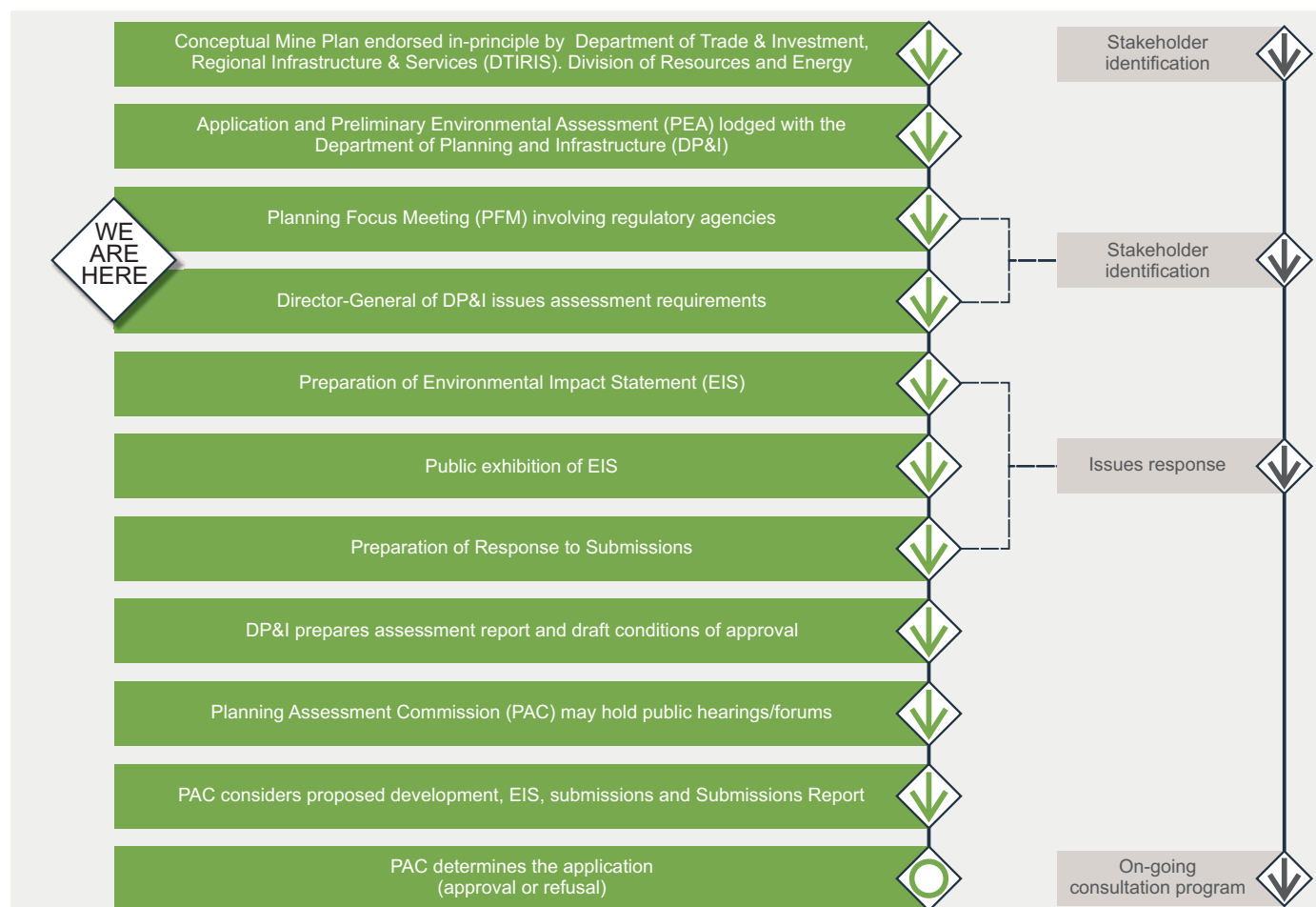
Community Benefits

The Project will have a number of benefits including:

- Continuing surety of employment for the existing 130 staff at Rix's Creek Mine along with the other additional 370 Hunter Valley based staff employed by The Bloomfield Group
- The Bloomfield Group being a 100% Australian owned company has no offshore based companies so all revenue from the resource will be subject to the Australian Taxation system and State Government Royalty payments
- Continuity of work for contractors and suppliers



Planning focus meeting mine inspection by government agencies



Consultation with affected owners, stakeholder and local communities will continue throughout the environmental assessment of the proposed development, as well as during the detailed design, construction and operational phase.

- Minimising the area of disturbance to achieve maximum extraction of an essential energy source
- The multiplier effect of expenditure both directly and indirectly in the community;
- Ongoing support and sponsorship of local community and organisations; and
- Ongoing commitment to compliance with environmental requirements.

The Bloomfield Group looks forward to collaborating with the community during the environmental assessment process and supporting these community groups into the future.

Project Community Consultation

The Bloomfield Group and Rix's Creek Mine intend to enter into ongoing consultation and conversation with the local community

throughout the environmental assessment and planning approvals process. In addition, there are key steps where formal community consultation is required, including:

- During the preparation of the EIS;
- Public Exhibition of the EIS; and
- Responding to public submissions on the EIS.

As these milestones are approached further updates will be provided, including details of where copies of publicly available documents can be viewed.

In addition, The Bloomfield Group will organise community information sessions to provide the community with the opportunity to review project information and ask questions of the Rix's Creek Mine project team. More details on these sessions will be provided in due course.



Progressive mine rehabilitation



Existing Pit 3 and progressive rehabilitation

Key Project Contacts

Garry Bailey
General Manager Mining Development



0407 938 003



gbailey@bloomcoll.com.au

John Hindmarsh
Senior Environmental Officer



0427 436 285



jhindmarsh@bloomcoll.com.au

Communication and Information

We welcome your questions and comments about the Rix's Creek Continuation of Mining Project, as part of the ongoing stakeholder and community consultation.

You can access further information via the Bloomfield group website, or by using the details below.



www.bloomcoll.com.au/operations



info@bloomcoll.com.au



PO Box 4, East Maitland NSW 2323